

# Year-by-Year Results

## 1956-57

Won 13, Lost 13

Coach: Fred A. Enke

D1	Northern Arizona	W	79-57
D3	Hamline	W	79-74
D7	at Utah	L	55-66
D8	at Utah	L	65-89
D13	New Mexico	W	74-55
D17	Murray State	W	81-70
D19	Colorado State	W	73-63
D22	California	L	49-70
D28	at Tennessee	L	66-70
D29	at Vanderbilt	L	76-107
J1	at Memphis State	L	76-93
J3	at Oklahoma City	L	55-80
J7	Texas Tech	W	79-63
J11	*at New Mexico State	L	73-77
J12	*at UTEP	L	69-93
J26	UC-Santa Barbara	W	72-67
J28	at Northern Arizona (ot)	W	103-93
F2	*New Mexico State	W	69-47
F4	*UTEP	W	73-52
F8	*West Texas State	W	77-67
F12	*Hardin-Simmons	L	69-80
F16	*at Arizona State	W	96-90
F23	*at Hardin-Simmons	L	69-80
F25	at Texas Tech	L	84-100
F26	*at West Texas State	L	67-71
M4	*Arizona State	W	77-70

\* Border Conference game (5-5, 3rd)

## 1957-58

Won 10, Lost 15

Coach: Fred A. Enke

D2	Northern Arizona	W	64-59
D7	at Iowa	L	63-80
D9	at Bradley	L	52-91
D11	at Washington U., St. Louis	L	52-61
D13	Pacific	W	82-74
D17	Cal Poly-SLO	W	66-65
D20	Loyola Marymount	W	77-67
D21	USC	W	78-72
D27	at San Jose State	L	63-77
D28	Santa Clara (1)	L	55-66
D30	Michigan	L	76-88
J4	*at UTEP	W	71-67
J6	*at New Mexico State	L	51-71
J11	at San Diego State	L	76-83
J18	*Hardin-Simmons	L	73-75
J25	*West Texas State	L	62-72
J27	at Northern Arizona	L	70-85
F1	*New Mexico State	W	68-66
F3	*UTEP	W	60-59
F5	Bradley	L	58-71
F8	*at West Texas State	L	49-80
F10	*at Hardin-Simmons	W	69-52
F15	San Diego Marines (Ex.)	L	74-83
F22	*Arizona State	L	66-70
F26	Cal State-Los Angeles	W	84-68
M3	*at Arizona State	L	76-78

\* Border Conference game (4-6, T4th)  
(1) at San Jose, Calif.

## 1958-59

Won 4, Lost 22

Coach: Fred A. Enke

D2	Western New Mexico	W	71-61
D6	Northern Arizona	L	66-72
D12	Cal State-Los Angeles	L	77-81
D13	UC-Santa Barbara	W	74-69
D19	at Utah State	L	57-83
D20	at Idaho State	L	58-86
D22	at Idaho State	L	51-71
D26	at Stanford	L	59-74
D27	at California	L	46-90
D29	at Pacific	L	61-70
J2	San Jose State	L	62-64
J3	Santa Clara	L	38-79
J10	*at West Texas State	L	76-90
J12	*at Hardin-Simmons	L	50-68
J24	*at Arizona State	L	72-88
J26	at Northern Arizona	L	69-97
J31	*UTEP	L	66-76
F2	*New Mexico State	L	58-66
F7	*Arizona State	L	62-85
F9	at Cal State-Los Angeles	L	72-86
F14	*Hardin-Simmons	W	66-64
F16	*West Texas State	L	78-84
F21	*at New Mexico State	L	61-80
F23	*at UTEP	L	51-76
F28	at Air Force Academy	L	62-115
M2	at New Mexico	W	80-77

\* Border Conference game (1-9, 6th)

## 1959-60

Won 10, Lost 14

Coach: Fred A. Enke

D2	Western New Mexico	W	73-68
D5	Northern Arizona	W	76-62
D11	at UC-Santa Barbara	L	78-84
D12	at Cal State-LA	L	74-82
D15	San Diego State	W	65-50
D18	San Diego Marines (Ex.)	L	67-87
D22	at Washington State	L	58-64
J2	at Colorado State	L	64-103
J4	at Regis	L	69-74
J5	at Northern Colorado	L	71-82
J9	*New Mexico State	L	53-70
J11	*UTEP	W	62-55
J15	*Hardin-Simmons	W	72-58
J23	*Arizona State	L	61-71
J27	at Northern Arizona	L	69-77
J30	*at Hardin-Simmons	L	63-81
F1	*at West Texas State	L	68-80
F6	Cal State-Los Angeles	W	104-84
F8	*West Texas State	W	77-62
F10	New Mexico	W	64-62
F13	Fresno State	L	68-69
F20	at Air Force Academy	W	73-66
F27	*at UTEP	W	100-77
F29	*at New Mexico State	L	46-76
M5	*at Arizona State	L	71-76

\* Border Conference game (4-6, 4th)

## 1960-61

Won 11, Lost 15

Coach: Fred A. Enke

D2	Colorado	L	72-82
D3	Colorado	L	60-83
D6	Northern Arizona	W	78-59
D8	Cal State-Los Angeles	W	92-90
D13	Eastern New Mexico	W	118-66
D16	at New Mexico	L	73-79
D17	at Air Force Academy	L	67-76
D19	at Iowa	L	64-105
D21	at Nebraska	L	55-79
D27	at UC-Santa Barbara (ot)	W	80-75
D29	Idaho State	L	64-75
J4	Regis	W	79-61
J7	*UTEP	W	74-71
J9	*New Mexico State	L	64-89
J12	at UCLA	L	68-90
J25	at Northern Arizona	W	67-49
J26	*at West Texas State	W	81-77
J30	*at Hardin-Simmons	L	80-84
F4	*at Arizona State	L	78-94
F11	*West Texas State	W	66-63
F13	*Hardin-Simmons	W	83-68
F18	*at UTEP	W	74-65
F20	*at New Mexico State	L	68-73
F25	*Arizona State	L	75-94
M3	at UC-Santa Barbara	L	60-76
M4	at Cal State-Los Angeles	L	76-107

\* Border Conference game (5-5, 3rd)

## 1961-62

Won 12, Lost 14

Coach: Bruce Larson

D1	Utah	L	62-71
D2	Utah State	L	54-67
D5	Northern Arizona	W	70-52
D8	at Colorado	L	51-72
D9	at Colorado	L	57-60
D15	Pittsburgh (1)	L	58-83
D16	Duke (1)	L	47-78
D18	at Kansas State	L	43-59
D22	Northern Colorado	W	77-50
D23	New Mexico	W	85-63
D29	Brigham Young	W	60-58
D30	Denver	W	71-57
J4	Hardin-Simmons	W	101-62
J6	West Texas State	W	76-68
J11	at New Mexico State	L	55-68
J13	at UTEP (ot)	L	56-57
J20	Arizona State	L	67-73
J31	Cal State-Los Angeles	W	80-60
F3	New Mexico State	W	68-67
F5	UTEP	W	57-52
F10	at Hardin-Simmons	W	86-74
F12	at West Texas State	L	72-87
F17	at Northern Arizona	W	68-59
F23	Air Force Academy	L	63-70
F24	at Western New Mexico	L	71-74
F27	at Arizona State	L	53-67

(1) at Steel Bowl Tourn., Pittsburgh, Pa.

## 1962-63

Won 13, Lost 13

Coach: Bruce Larson

D1	Fresno State	W	75-67
D3	at Wisconsin	W	51-46
D8	Northern Arizona	W	62-60
D14	at Colorado State	L	65-75
D15	at Air Force Academy	L	46-57
D19	Idaho State	W	57-51
D22	Colorado	W	60-52
D26	Iowa (1)	L	56-57
D27	Washington State (1)	W	67-57
D29	Seattle (1)	L	59-75
J2	Hamline	W	82-47
J4	at UTEP	L	55-76
J5	at New Mexico State (ot)	W	63-59
J11	*Utah (ot)	L	50-52
J12	*Brigham Young	L	75-80
J17	*at Wyoming	L	72-84
J18	*at New Mexico	L	48-59
J30	at Northern Arizona	W	71-63
F2	New Mexico State	W	63-40
F4	UTEP	L	50-65
F9	*at Arizona State	L	54-73
F15	*at Brigham Young	L	72-77
F16	*at Utah	W	74-70
F22	*New Mexico	W	49-46
F23	*Wyoming	W	84-63
M4	*Arizona State	L	53-58

\* Western Athletic Conference game (3-7, T5th)  
(1) at Far West Classic, Portland, Ore.

## 1963-64

Won 15, Lost 11

Coach: Bruce Larson

Evansville Tournament Champions

D4	Evansville	L	58-61
D6	at Colorado	L	60-75
D7	at Colorado State	L	45-57
D10	Denver	W	74-64
D13	San Jose State	W	63-44
D14	Northern Arizona	W	96-57
D18	California	W	64-58
D21	at Utah State	L	60-64
D27	Maryland (1)	W	57-54
D28	Evansville (1)	W	78-61
D30	at Bradley	L	59-67
J6	Seattle	W	59-53
J10	Colorado State	W	57-55
J11	New Mexico State	W	72-40
J16	*at New Mexico	L	50-59
J18	*at Wyoming	L	69-71
J30	at Northern Arizona	W	83-71
F1	USC	W	71-63
F8	*Arizona State	L	66-67
F14	*Utah	W	85-72
F15	*Brigham Young	W	80-67
F21	*Wyoming	W	81-69
F22	*New Mexico	W	54-46
F28	*at Utah	L	73-86
F29	*at Brigham Young	L	71-84
M4	*at Arizona State	L	69-72

\* Western Athletic Conference game (4-6, 4th)  
(1) at Evansville Tournament, Evansville, Ind.

## 1964-65

Won 17, Lost 9

Coach: Bruce Larson

D1	at Seattle	W	76-71
D4	Pepperdine	W	78-49
D7	Texas Tech	W	77-75
D11	at California	L	55-57
D12	at San Jose State	L	59-66
D19	Cal State-Hayward	W	86-44
D23	UTEP	W	77-40
D28	UCLA (1)	L	79-99
D29	Washington (1)	W	77-63
D30	USC (1)	W	57-55
J7	*at Wyoming (ot)	W	62-60
J9	*at New Mexico	L	42-64
J11	Northern Arizona	W	81-50
J15	*Brigham Young	W	75-73
J16	*Utah	W	57-48
J27	at Northern Arizona	W	89-63
J28	San Francisco	W	71-56
J30	Memphis State	W	99-64
F3	Bradley (3 ot)	W	85-83
F6	at UTEP	L	39-51
F13	*at Arizona State	L	69-76
F19	*Wyoming	W	78-77
F20	*New Mexico	L	66-70
F26	*at Brigham Young	L	88-92
F27	*at Utah	L	72-100
M3	*Arizona State	W	97-87

\* Western Athletic Conference game (5-5, T2nd)  
(1) at Los Angeles Classic, Los Angeles, Calif.

## 1965-66

Won 15, Lost 11

Coach: Bruce Larson

D1	at Northern Arizona	W	74-69
D4	at Memphis State	W	94-69
D6	at Texas Tech	L	72-77
D9	Pacific	W	71-61
D11	Northern Arizona	W	68-58
D15	Seattle	W	73-64
D20	Colorado (3 ot)	L	73-77
D22	San Jose State	W	56-47
D27	at Denver	L	70-72
D29	California (1)	W	62-58
D30	Seattle (1) (ot)	L	74-79
J7	*at Utah	L	78-87
J8	*at Brigham Young	L	74-87
J15	Southern Illinois	W	82-62
J22	*Arizona State	L	65-68
J28	Stanford	W	94-54
J31	at UCLA	L	67-84
F4	*New Mexico (2 ot)	W	83-77
F5	*Wyoming	W	76-70
F10	at UTEP (ot)	L	72-81
F12	Cal Poly-Pomona	W	79-70
F18	*Utah	W	71-68
F19	*Brigham Young	W	76-62
F26	*at Arizona State	W	91-80
M3	*at New Mexico	L	69-83
M5	*at Wyoming	L	66-104

\* Western Athletic Conference game (5-5, 3rd)  
(1) at Northwest Holiday Tournament, Seattle, Wash.

## 1966-67

Won 8, Lost 17

Coach: Bruce Larson

D2	at San Jose State	W	79-68
D3	at San Francisco	L	46-60
D7	Hardin-Simmons	W	80-65
D9	Texas Tech	W	64-49
D12	Weber State	W	62-57
D15	Northern Arizona	L	67-82
D17	at Colorado	L	74-91
D19	at Stanford	L	67-82
D23	Harvard	W	59-58
D27	Illinois (1)	L	77-93
D29	Arkansas (1)	L	61-65
D30	Wisconsin (1)	L	77-104
J7	*at Arizona State	L	67-73
J13	*Brigham Young	L	64-77
J14	*Utah	W	74-70
J19	Phillips Oilers (Ex.)		74-107
J30	at Northern Arizona	L	75-82
F2	*at Wyoming	L	73-75
F4	*at New Mexico	L	50-81
F9	UTEP	L	65-75
F11	New Mexico State	L	61-66
F13	Japanese Olympic Team (Ex.)		
82-85			
F17	*New Mexico	W	70-64
F18	*Wyoming	L	59-68
F25	*Arizona State	W	92-65
M3	*at Utah	L	72-88
M4	*at Brigham Young	L	58-70

\* Western Athletic Conference game (3-7, 5th)

(1) at Los Angeles Classic, Los Angeles, Calif.



# Year-by-Year Results

## 1967-68

### Won 11, Lost 13

#### Coach: Bruce Larson

D1	San Jose State	W	94-59
D4	Weber State	W	73-67
D7	Northern Arizona	W	82-74
D9	at UTEP (ot)	L	66-67
D15	at Creighton	L	66-70
D16	at Southern Illinois	W	65-50
D18	Colorado	W	76-67
D22	Houston	L	76-81
D23	North Texas State	L	62-65
D27	St. Francis, Pa. (1)	L	71-85
D28	Villanova (1)	L	59-75
J6	*Arizona State	W	74-69
J12	*at Brigham Young	L	62-72
J13	*at Utah	L	77-83
J19	Air Force	W	75-68
J30	Northern Arizona	W	75-68
F2	*Wyoming	L	85-90
F3	*New Mexico	W	69-68
F9	at New Mexico State	L	75-93
F17	*at Arizona State	L	61-78
F22	*at New Mexico	L	74-102
F24	*at Wyoming	L	69-79
M1	*Utah	W	89-79
M2	*Brigham Young	W	96-85

\* Western Athletic Conference game (4-6, T4th)  
(1) at Quaker City Tournament, Philadelphia, Pa.

## 1968-69

### Won 17, Lost 10

#### Coach: Bruce Larson

D3	Northern Arizona	W	86-69
D5	at Houston	L	64-85
D7	at Texas Tech (ot)	W	85-80
D11	New Mexico State	L	72-78
D14	at Northern Arizona	L	73-76
D17	Evansville	W	102-88
D19	at Colorado	L	69-70
D23	Nebraska	W	68-63
D26	Purdue (1)	L	72-98
D28	Stanford (1)	W	75-64
D30	West Virginia (1)	W	77-60
J3	Idaho State	W	92-48
J4	Seattle	W	75-66
J7	Eastern Michigan	W	89-72
J11	*at Arizona State	W	81-80
J16	Creighton	W	72-63
J23	*Brigham Young	W	76-70
J25	*Utah	W	90-64
J31	Loyola, La.	W	93-65
F1	UTEP	W	75-66
F6	*at Wyoming	L	72-73
F8	*at New Mexico	L	74-79
F13	*at Utah	L	75-105
F15	*at Brigham Young	L	66-75
F20	*New Mexico	W	77-75
F22	*Wyoming (ot)	L	67-68
M1	*Arizona State	W	90-73

\* Western Athletic Conference game (5-5, 3rd)  
(1) at Rainbow Classic, Honolulu, Hawaii

## 1969-70

### Won 12, Lost 14

#### Coach: Bruce Larson

D1	at UCLA	L	65-90
D4	Weber State	W	72-68
D8	Baylor	W	81-76
D12	Iowa State	W	78-65
D15	Texas Tech	L	80-85
D18	at North Texas State	L	83-98
D20	at Nebraska	L	69-79
D26	Jacksonville (1)	L	72-104
D27	Fordham (1)	L	74-82
J2	at New Mexico State	L	76-95
J5	Florida State	L	78-87
J8	*Brigham Young	W	90-77
J10	*Utah	L	74-79
J15	*at UTEP	L	59-73
J17	*at New Mexico	W	78-72
J24	Northern Arizona	W	94-76
J29	*Colorado State	W	75-69
J31	*Wyoming	W	81-70
F7	*Arizona State	W	97-75
F12	*at Utah	L	75-92
F14	*at Brigham Young	L	78-93
F19	*New Mexico	W	80-78
F21	*UTEP	W	86-72
F26	*at Wyoming	L	74-93
F28	*at Colorado State	L	80-94
M4	*at Arizona State	W	90-89

\* Western Athletic Conference game (8-6, 4th)  
(1) at Evansville Tournament, Evansville, Ind.

## 1970-71

### Won 10, Lost 16

#### Coach: Bruce Larson

##### Poinsettia Classic Champions

D1	at Seattle	W	78-74
D4	California	L	79-87
D5	Butler	W	108-92
D9	at New Mexico State	L	74-76
D11	at Baylor	L	91-101
D12	at Texas Tech	L	67-79
D18	San Jose State	W	100-77
D22	at Northern Arizona	W	85-70
D28	Texas A&M (1)	W	90-76
D29	Mississippi State (1)	W	77-75
D31	at Florida State	L	85-95
J4	DePauw	W	105-68
J7	*at Colorado State	L	65-90
J9	*at Wyoming	L	65-91
J16	*at Arizona State	L	83-112
J28	*Utah	L	86-99
J30	*Brigham Young	W	81-76
F4	*at New Mexico	L	77-81
F6	*at UTEP	L	66-80
F12	*Wyoming	W	98-81
F13	*Colorado State	L	71-74
F20	*Arizona State	L	83-95
F26	*at Brigham Young	L	83-95
F27	*at Utah	L	91-102
M5	*UTEP	W	82-77
M6	*New Mexico	L	83-93

\* Western Athletic Conference game (3-11, 8th)  
(1) at Poinsettia Classic, Greenville, S.C.

## 1971-72

### Won 6, Lost 20

#### Coach: Bruce Larson

D2	at Iowa State	L	54-71
D4	at California	L	76-79
D6	UC-Riverside#	W	73-72
D9	San Diego State#	L	67-69
D13	at New Mexico State	L	73-89
D17	Cal. State-Los Angeles#	L	81-86
D20	South Alabama#	L	66-76
D22	San Francisco#	L	62-70
D27	UC-Santa Barbara#	L	63-97
D29	Ohio State (1)	L	47-90
D30	Texas (1)	L	69-86
J7	*at Utah	W	78-76
J8	*at Brigham Young	L	67-88
J14	*Colorado State	W	78-74
J15	*Wyoming	W	75-66
J22	Northern Arizona#	W	70-65
J28	*at Utah	L	50-68
J29	*at New Mexico	L	55-61
F5	*Arizona State	L	78-91
F11	*Brigham Young	L	78-89
F12	*Utah	L	73-82
F18	*at Wyoming	L	55-71
F19	*at Colorado State	L	67-87
F24	*New Mexico	W	53-51
F26	*UTEP	L	48-63
M4	*at Arizona State	L	75-83

\* Western Athletic Conference game (4-10, 7th)  
(1) at Bruin Classic, Los Angeles, Calif.

# Games played at Tucson Community Center

## 1972-73

### Won 16, Lost 10

#### Coach: Fred Snowden

N29	Cal State-Bakersfield	W	94-87
D2	at San Francisco	L	75-94
D4	at Stanford	L	68-75
D7	USC	W	71-69
D12	San Diego	W	79-70
D16	Northern Illinois (ot)	W	91-90
D23	at Kansas State	L	69-85
D27	Purdue (1)	W	83-80
D28	Nevada-Las Vegas (1)	L	64-65
J5	*UTEP	W	79-73
J6	*New Mexico	W	83-73
J13	*at Arizona State	L	60-63
J15	at San Diego State	L	68-81
J18	UC-Santa Barbara	W	79-77
J20	at Northern Arizona	W	82-72
J25	*at Brigham Young	L	79-93
J26	*at Utah	W	89-86
F1	*Wyoming%	W	87-69
F3	*Colorado State	W	94-87
F8	*at New Mexico	L	73-93
F10	*at UTEP	W	81-78
F17	*Arizona State	L	105-110
F23	*Utah (3 ot)	W	101-95
F24	*Brigham Young	W	100-94
M2	*at Colorado State	L	72-79
M3	*at Wyoming	W	84-82

\* Western Athletic Conference game (9-5, T2nd)  
(1) at Holiday Classic, Las Vegas, Nev.

% First game in McKale Center

## 1973-74

### Won 19, Lost 7

#### Coach: Fred Snowden

N30	Illinois	W	101-80
D1	at USC	L	76-100
D3	at Colorado	W	91-76
D5	Athletes in Action (Ex.)	W	86-77
D8	Cal Poly-Pomona	W	87-54
D11	San Diego State	W	101-79
D13	Idaho	W	101-80
D19	Kansas State	W	74-72
D22	Texas Tech	W	88-64
D28	Marquette (1)	L	62-76
D29	SMU (1)	W	86-82
J3	*at Wyoming	W	93-77
J5	*at Colorado State	L	67-85
J11	*New Mexico	W	97-89
J12	*UTEP	L	63-81
J15	Northern Arizona	W	80-62
J19	*at Utah	L	106-121
J24	*at Brigham Young	W	93-91
J25	Centenary	W	97-88
F2	*Arizona State	W	98-90
F8	*Colorado State	W	76-67
F9	*Wyoming	W	78-68
F14	*UTEP	W	85-59

F16	*at New Mexico	L	72-99
F21	*Brigham Young	W	118-90
F23	*Utah	W	122-92
M2	*at Arizona State	L	95-108

\* Western Athletic Conference game (9-5, T2nd)  
(1) at Milwaukee Classic, Milwaukee, Wis.

## 1974-75

### Won 22, Lost 7

#### Coach: Fred Snowden

##### Fiesta Bowl Classic Champions

##### National Commissioners' Invitational Tournament Participants

N29	Northern Illinois	W	103-85
D4	UC-Davis	W	84-58
D7	at San Diego State	W	81-79
D10	Nevada-Las Vegas	W	85-80
D13	Illinois (1)	W	78-66
D14	Kansas State (2)	W	67-65
D21	Colorado	W	94-63
D27	California (3)	L	82-84
D28	Columbia (3)	W	94-73
D30	Stanford	W	80-67
J4	at Texas Tech (ot)	W	62-61
J6	Northern Arizona	W	78-77
J10	*at Utah (ot)	L	74-75
J11	*at Brigham Young	W	83-66
J17	*New Mexico	W	67-49
J18	*UTEP	W	69-57
J24	*at Wyoming	L	61-65
J25	*at Colorado State	W	85-82
F1	*Arizona State	L	81-83
F14	*Brigham Young	W	97-81
F15	*Utah	W	93-89
F21	*at UTEP	L	61-68
F22	*at New Mexico	W	58-56
F28	*Colorado State	W	107-97
M1	*Wyoming	W	92-74
M8	*at Arizona State	L	92-107
M13	East Carolina (4)	W	94-78
M15	Purdue (4)	W	102-96
M16	Drake (4)	L	76-83

\* Western Athletic Conference game (9-5, 3rd)

(1) at Fiesta Bowl Classic, Tucson, Ariz.

(2) at Fiesta Bowl Classic, Tempe, Ariz.

(3) at Old Dominion Classic, Norfolk, Va.

(4) at National Commissioners' Invitational Tourn., Louisville, Ky.

## 1975-76

### Won 24, Lost 9

#### Coach: Fred Snowden

##### Western Athletic Conference Champions

##### NCAA Tournament Participants

N28	Oregon State	W	96-67
D1	Midwestern	W	119-80
D3	Idaho	W	88-62
D6	Northern Arizona	W	98-81
D8	at Kansas State	L	61-71
D10	at Nevada-Las Vegas	L	94-98
D12	Idaho St. (1)	L	82-87
D13	SMU (2)	W	83-81
D20	at Illinois	L	60-66
D22	Old Dominion	W	88-74
D27	Cincinnati (3)	W	71-64
D29	Iowa (3)	L	80-82
D30	Hawaii (3)	W	84-74
J6	Cal State-Fullerton	W	85-70
J10	Detroit	W	106-76
J16	*Brigham Young	W	79-78
J17	*Utah	W	87-77
J23	*at UTEP	L	42-61
J24	*at New Mexico	W	80-79
J27	Portland State	W	114-94
J30	*Colorado State	W	94-76
J31	*Wyoming	W	64-57
F7	*at Arizona State	L	63-67
F13	*at Utah	W	89-76
F14	*at Brigham Young (ot)	L	74-79
F20	*New Mexico (ot)	W	67-65
F21	*UTEP	W	64-45
F27	*at Wyoming	W	74-66
F28	*at Colorado State	W	78-72
M6	*Arizona State	W	77-72
M13	Georgetown (4)	W	83-76
M18	Nevada-Las Vegas (5) (ot)	W	114-109
M20	UCLA (5)	L	66-82

\* Western Athletic Conference game (11-3, 1st)

(1) at Fiesta Bowl Classic, Tempe, Ariz.

(2) at Fiesta Bowl Classic, Tucson, Ariz.

(3) at Rainbow Classic, Honolulu, Hawaii

(4) at NCAA Tournament, Tempe, Ariz.

(5) at NCAA West Regional, Los Angeles, Calif.

## Fred Snowden Head Coach, 1972-82



Known for his high-octane offense, Fred "The Fox" Snowden brought the excitement back to Wildcat basketball during his 10 years on the Arizona sideline.

Snowden, the UA mentor from 1972-82, and his charges averaged more than 80 points per game in six of his 10 years and topped the 100-point barrier 27 times. In that span, he tallied a 167-108 (.607) mark, a winning percentage that is topped by only two UA coaches since 1924.

"The Fox" led UA to three postseason berths, including the 1975 National Commissioners' Invitational Tournament and the 1976 and 1977 NCAA Tournaments. His best season came in 1976, when the Wildcats went 24-9, won the Western Athletic Conference championship, and advanced to NCAA West Regional Final. He was inducted into the Arizona Sports Hall of Fame in 1988.



# Year-by-Year Results

## 1976-77

### Won 21, Lost 6

Coach: Fred Snowden

#### NCAA Tournament Participants

N23	Yugoslavia (Ex.)	85-71
N26	Arizona State	W 92-91
N29	Cal. State-Fullerton	W 91-80
D2	at Oregon State	W 81-73
D4	Idaho	W 95-40
D8	Adams State	W 115-55
D10	Northwestern	W 78-64
D11	Pacific	W 78-60
D18	at Detroit	L 68-70
D22	at Purdue	W 85-76
D27	Stanford	W 90-82
D30	SMU	W 117-85
J6	San Diego State	W 80-77
J13	*at New Mexico	W 89-87
J15	*at UTEP	L 59-60
J20	*Utah	W 102-98
J22	*Brigham Young	W 113-85
J28	*at Wyoming	L 68-69
J29	*at Colorado State	W 77-72
F5	*Arizona State	W 99-83
F11	*UTEP	W 67-60
F12	*New Mexico	W 88-84
F17	*at Brigham Young	W 64-62
F19	*at Utah	L 61-76
F24	*Colorado State	W 91-86
F26	*Wyoming	W 88-63
M5	*at Arizona State (ot)	L 89-95
	Moscow Red Army (Ex.)	80-96
M12	Southern Illinois (1)	L 77-81

\* Western Athletic Conference game (10-4, 2nd)

(1) at NCAA Tournament, Omaha, Neb.

## 1977-78

### Won 15, Lost 11

Coach: Fred Snowden

N26	at Arizona State	W 72-70
N28	at Illinois	L 107-113
D2	at San Diego State	W 80-79
D5	NAU	W 76-65
D9	Houston	W 81-80
D10	Purdue	L 78-80
D17	Harvard	W 83-60
D20	Eastern Michigan	W 92-78
D23	Pepperdine	W 110-65
D29	at UCLA	L 63-85
J6	Grand Canyon	W 78-66
J8	Athletes in Action (Ex.)	83-82
J13	*UTEP	W 74-60
J14	*New Mexico	L 81-93
J19	*at Brigham Young	L 86-87
J21	*at Utah	L 92-101
J24	Nevada-Las Vegas	W 114-89
J27	*Colorado State	W 75-63
J28	*Wyoming	W 99-75
F4	*at Arizona State (ot)	L 64-69
F9	*at New Mexico	L 85-103
F11	*at UTEP	W 68-64
F16	*Utah	L 73-83
F18	*Brigham Young	W 104-90
F24	*at Wyoming	L 73-78
F25	*at Colorado State	L 88-95
M4	*Arizona State	W 88-75

\* Western Athletic Conference game (6-8, T4th)

## 1978-79

### Won 16, Lost 11

Coach: Fred Snowden

N24	Arizona State	L 82-84
N27	at Northwestern (ot)	W 83-80
D2	Windsor (Ex.)	100-70
D8	at Washington State	L 68-74
D9	at Washington	L 66-75
D13	Grand Canyon	W 90-78
D16	Idaho	W 69-58
D19	at Nevada-Las Vegas	L 79-117
D22	New Mexico	W 107-88
D23	Southwestern Louisiana	W 76-73
D30	Northern Arizona	W 67-63
J4	*Stanford	W 74-64
J6	*California	W 69-64
J12	*at Oregon	L 60-63
J13	*at Oregon State	L 80-116
J18	*UCLA	W 70-69
J22	*USC	W 74-72

J27	*at Arizona State	L 68-76
F2	*at California	W 83-75
F3	*at Stanford	W 63-62
F8	*Oregon State	L 79-93
F10	*Oregon (ot)	W 69-67
F15	*at USC	L 67-70
F17	*at UCLA	L 86-110
F24	*Arizona State	W 85-80
F26	at New Mexico	L 98-129
M1	*Washington	W 71-68
M3	*Washington State	W 78-72

\* Pacific-10 Conference game (10-8, T4th)

## 1979-80

### Won 12, Lost 15

Coach: Fred Snowden

N23	Athletes in Action (Ex.)	62-68
N30	at Houston	L 72-74
D3	San Jose State	W 72-70
D4	Midwestern (2ot)	W 93-85
D8	Grand Canyon	W 69-60
D15	Idaho State	W 89-83
D17	Fresno State	W 65-61
D20	*Washington	W 67-65
D22	*Washington State	L 57-59
D27	at Arizona State	L 78-85
D29	Lamar	W 61-57
D31	Kansas	L 60-78
J3	*at California	W 89-81
J5	*at Stanford	L 80-99
J10	*Oregon State	L 72-77
J12	*Oregon	L 73-90
J19	*at USC	W 86-83
J21	*at UCLA	W 59-69
J26	*Arizona State	L 72-97
J31	*Stanford (ot)	W 95-88
F2	*California	W 65-62
F7	*at Oregon	L 62-76
F9	*at Oregon State	L 63-73
F14	*USC	W 74-65
F16	*UCLA	L 78-90
F23	*at Arizona State	L 72-78
F28	*at Washington	L 72-76
M1	*at Washington State	L 71-74

\* Pacific-10 Conference game (6-12, 6th)

## 1980-81

### Won 13, Lost 14

Coach: Fred Snowden

N28	Cal. State-Hayward	W 101-69
D1	Fresno State	L 65-77
D3	Athletes in Action (Ex.)	69-65
D6	Kansas State	L 53-55
D9	at Fresno State	L 60-70
D12	UC-Riverside	W 103-61
D20	Charleston, W.Va.	W 93-70
D26	UC-Santa Barbara (1)	W 87-58
D27	Lamar (1)	L 61-63
D30	Grand Canyon	W 74-60
J3	*Oregon	W 73-70
J5	*Oregon State	L 49-61
J8	*at Washington	W 84-77
J10	*at Washington State	L 71-80
J17	*UCLA	L 76-79
J19	*USC	L 63-67
J24	*at Arizona State	L 65-83
J30	*at Stanford	W 91-81
J31	*at California	W 73-71
F5	*Washington State	W 77-73
F7	*Washington (ot)	W 68-66
F12	*at UCLA	L 79-90
F14	*at USC	L 71-81
F21	*Arizona State	L 66-71
F26	*California	W 83-72
F28	*Stanford	W 73-69
M5	*at Oregon State	L 62-80
M7	*at Oregon	L 75-79

\* Pacific-10 Conference game (8-10, T5th)

(1) at Copper State Classic, Tucson, Ariz.

## 1981-82

### Won 9, Lost 18

Coach: Fred Snowden

N27	People's Republic of China (Ex.)	93-68
D3	UNLV	L 49-69
D5	Providence	W 62-58
D7	at Kansas	L 57-86
D9	at Kansas State	L 55-63
D18	Illinois Wesleyan	W 82-57

D19	New Mexico	W 67-63
D23	U.S. International	W 71-63
D28	Montana State (1)	W 64-59
D29	Minnesota (1)	L 62-91
J2	*at Oregon	L 88-97
J4	*at Oregon State	L 55-68
J8	*Washington (ot)	L 57-60
J9	*Washington State	L 53-59
J15	*at USC	L 67-89
J16	*at UCLA	L 56-65
J23	*Arizona State	L 54-55
J30	*California	L 73-85
F1	*Stanford	W 61-54
F4	*at Washington State	W 58-56
F6	*at Washington	L 62-86
F12	*UCLA	L 73-88
F13	*USC (ot)	L 59-60
F20	*at Arizona State	L 56-82
F26	*at California	L 59-63
F27	*at Stanford	W 72-67
M5	*Oregon State	L 64-92
M6	*Oregon	W 96-78

\* Pacific-10 Conference game (4-14, T8th)

(1) at Pillsbury Classic, Minneapolis, Minn.

## 1982-83

### Won 4, Lost 24

Coach: Ben Lindsey

N26	Houston (1)	L 63-104
N28	Tex.-San Antonio (1)	L 56-57
D1	Florida International	W 79-68
D4	at New Mexico	L 73-101
D6	at Nevada-Las Vegas	L 70-88
D8	at Tennessee	L 73-92
D11	Iowa State	L 66-80
D20	Northern Arizona	W 66-53
D23	San Diego State	W 46-44
D27	Illinois Wesleyan	L 64-67
J3	Athletes in Action (Ex.)	68-79
J6	*USC	L 67-74
J8	*UCLA	L 87-92
J13	*at Washington	L 61-74
J15	*at Washington State	L 64-86
J22	*at Arizona State	L 69-82
J29	*Oregon State	L 54-72
J31	*Oregon	L 84-86
F5	*at California	L 57-59
F7	*at Stanford	L 69-86
F10	*Washington State	L 65-75
F12	*Washington	L 72-80
F19	*Arizona State	L 70-77
F24	*at Oregon (ot)	L 57-63
F26	*at Oregon State	L 56-81
M3	*Stanford	W 74-73
M5	*California	L 59-84
M10	*at UCLA	L 58-111
M12	*at USC	L 70-72

\* Pacific-10 Conference game (1-17, 10th)

(1) at Kettle Classic, Houston, Texas

## 1983-84

### Won 11, Lost 17

Coach: Lute Olson

N19	Athletes in Action (Ex.)	72-87
N25	Northern Arizona	W 72-65
D1	Cal. State-Fullerton	L 66-67
D3	at Providence	L 69-72
D5	at Iowa State	L 63-75
D10	Pan American	L 60-65
D17	at San Diego State	L 80-90
D23	Tennessee	L 49-61
D27	Texas Tech (1) (ot)	W 51-49
D28	UTEP (1) (ot)	L 49-51
D30	Fort Hays State	W 81-64
J5	*at USC	L 61-71
J7	*UCLA	L 58-61
J12	*Washington	L 53-55
J14	*Washington State	L 49-51
J20	*Arizona State	W 71-49
J26	*at Oregon	L 55-69
F2	*California	W 56-50
F4	*Stanford	L 66-74
F11	*at Washington	L 51-56
F13	*at Oregon State	L 48-53
F17	*at Arizona State	W 65-64
F23	*Oregon (ot)	W 75-67
F25	*Oregon State	W 69-58
F27	*USC	W 55-49

M1	*at Stanford	W 87-76
M3	*at California	L 62-70
M8	*at UCLA	L 60-68
M10	*at Washington State	W 86-68

\* Pacific-10 Conference game (8-10, T5th)

(1) at Sun Bowl Tournament, El Paso, Texas

## 1984-85

### Won 21, Lost 10

Coach: Lute Olson

#### NCAA Tournament Participants

N23	Houston Baptist	W 63-56
N30	Tulsa	W 84-80
D1	San Jose State	W 79-44
D4	Loyola Marymount	W 82-75
D8	at Northern Arizona	W 82-61
D10	at Pan American	W 85-60
D15	San Francisco State	W 107-75
D17	Minnesota	L 79-88
D20	at New Mexico	L 58-59
D26	at Hawaii-Hilo	W 99-75
D29	Missouri (1)	L 73-76
D30	Hawaii-Pacific (1)	W 80-66
J5	*at Arizona State	W 61-60
J10	*at California	W 69-67
J12	*at Stanford	L 51-55
J17	*USC	L 63-64
J19	*UCLA	W 53-52
J24	*at Oregon State	L 55-59
J26	*at Oregon	W 73-54
J31	*Washington	W 69-56
F2	*Washington State	W 73-56
F7	*Stanford	W 68-56
F9	*California	W 66-48
F16	*at USC	W 60-55
F18	*at Washington State	W 63-60
F21	*Oregon	L 40-43
F23	*Oregon State	W 67-52
F28	*at Washington	L 58-60
M2	*at UCLA	L 54-58
M9	*Arizona State	W 68-48
M15	Alabama (2)	L 41-50

\* Pacific-10 Conference game (12-6, T3rd)

(1) at Hawaii-Pacific Classic, Pearl Harbor, Hawaii

(2) at NCAA Tournament, Albuquerque, N.M.

## 1985

### European Tour (All Exhibition Games)

#### Won 8, Lost 7

Coach: Lute Olson

My21	Novi Sad (Yugoslavia)	L 85-89
My23	Novi Sad (Yugoslavia)	W 94-90

#### Dieppe International Tournament

My24	Dieppe (France)	W 52-49
My25	USSR National Team	L 50-70
My25	Challans (France)	W 55-37
My25	Barcelona (Spain)	W 53-52
My26	Adidas Sect (USA)	L 50-52
My26	Netherlands National	W 79-76

#### Netherlands Tour

My28	Netherlands National	W 105-91
My29	Netherlands National	W 104-93
My30	Netherlands National	L 104-109
My31	Netherlands National	L 91-108

#### Perugia, Italy Tournament

Jn3	Siena (Italy)	W 109-78
Jn4	Adidas Select (USA)	L 80-110
Jn5	Perugia (Italy)	L 109-110





# Year-by-Year Results

## 1985-86

Won 23, Lost 9

Coach: Lute Olson

Valley Bank Fiesta Bowl Classic Champions

Pacific-10 Conference Champions

NCAA Tournament Participants

N29	Texas-San Antonio (1)	W	62-49
N30	Nevada-Las Vegas (1)	L	59-60
D1	Purdue (1)	L	74-81
D4	Denver	W	63-54
D7	Northern Arizona	W	66-57
D10	at Tulsa	L	51-54
D12	San Diego State	W	72-66
D14	New Mexico	W	70-55
D21	at Utah	L	68-76
D27	Princeton (2)	W	54-41
D28	Boston College (2)	W	71-61
J2	Hawaii-Hilo	W	104-71
J4	*Arizona State	W	62-53
J9	*Stanford	W	77-69
J12	*California (2ot)	W	79-72
J16	*at USC	L	62-63
J18	at Miami, Fla. (ot)	W	81-74
J23	*Oregon State (ot)	W	63-62
J25	*Oregon	W	85-68
J30	*at Washington State (ot)	L	63-65
F1	*at Washington	W	70-57
F6	*at California	W	61-52
F8	*at Stanford	L	56-62
F13	*UCLA	W	85-60
F15	*USC	W	71-62
F20	*at Oregon	W	65-59
F22	*at Oregon State	W	55-53
F27	*Washington	W	77-56
M1	*Washington State	W	62-61
M3	*at UCLA	W	88-76
M9	*at Arizona State	L	63-70
M14	Auburn	L	63-73

\* Pacific-10 Conference game (14-4, 1st)

- (1) at Great Alaska Shootout, Anchorage, Alaska
- (2) at Valley Bank Fiesta Bowl Classic, Tucson, Ariz.
- (3) at NCAA Tournament, Long Beach, Calif.

## 1986-87

Won 18, Lost 12

Coach: Lute Olson

Valley Bank Fiesta Bowl Classic Champions

NCAA Tournament Participants

N21	at UNLV (1)	L	87-92
D4	at San Diego State	W	110-78
D6	Utah	L	67-68
D8	at Northern Arizona	W	76-69
D10	Hawaii-Pacific	W	105-85
D13	at Georgetown	L	74-82
D27	St. Bonaventure (2)	W	70-64
D29	Texas Tech (2)	W	53-40
J2	*at Oregon State	W	54-48
J3	*at Oregon (ot)	L	54-55
J8	*USC	W	78-44
J11	*UCLA	L	83-84
J15	*at Washington State	W	96-59
J17	*at Washington	W	73-72
J19	*Stanford	W	77-70
J22	*California (2ot)	L	81-82
J24	at Illinois	L	63-82
J29	*at Arizona State	W	82-67
J31	*Arizona State	W	66-54
F5	*Oregon	W	68-53
F7	Iowa	L	80-89
F12	*at UCLA	L	65-81
F14	*Oregon State	W	71-61
F17	*at USC	W	73-61
F19	*Washington State	W	84-58
F21	*Washington	W	81-70
F26	*at Stanford	L	73-75
M1	*at California	W	70-51
M6	Oregon (3)	L	63-72
M13	UTEP (4) (ot)	L	91-98

\* Pacific-10 Conference game (13-5, 2nd)

- (1) at Big Apple N.I.T., Las Vegas, Nev.
- (2) at Valley Bank Fiesta Bowl Classic, Tucson, Ariz.
- (3) at Pac-10 Conference Tour., Los Angeles, Calif.
- (4) at NCAA Tournament, Tucson, Ariz.

## 1987-88

Won 35, Lost 3

Coach: Lute Olson

Great Alaska Shootout Champions

Valley Bank Fiesta Bowl Classic Champions

Pacific-10 Conference Champions

Pac-10 Conference Tournament Champions

NCAA Tournament Participants (Final Four)

N27	Duquesne (1)	W	133-78
N28	Michigan (1)	W	79-64
N30	Syracuse (1)	W	80-69
D4	Long Beach State	W	94-62
D6	Pepperdine	W	73-68
D8	Northern Arizona	W	77-59
D12	at Iowa	W	66-59
D16	Arkansas-Little Rock	W	77-53
D20	*at Washington	W	110-71
D22	*at Washington State	W	89-55
D29	Michigan State (2)	W	78-58
D30	Duke (2)	W	91-85
J2	at New Mexico	L	59-61
J7	*California	W	80-51
J9	*Stanford	W	90-65
J14	*at Oregon State	W	70-48
J16	*at Oregon	W	70-54
J21	*USC	W	92-48
J24	*UCLA	W	86-74
J28	*Arizona State	W	99-59
J30	Illinois	W	78-70
F4	*at Stanford	L	74-82
F7	*at California	W	74-62
F11	*Oregon	W	89-57
F14	*Oregon State	W	77-62
F18	*at USC	W	103-68
F20	*at UCLA (ot)	W	78-76
F27	*at Arizona State	W	101-73
M3	*Washington State	W	79-41
M5	*Washington	W	89-71
M11	California (3)	W	88-64
M12	Stanford (3)	W	97-83
M13	Oregon State (3)	W	93-67
M18	Cornell (4)	W	90-50
M20	Seton Hall (4)	W	84-55
M25	Iowa (5)	W	99-79
M27	North Carolina (5)	W	70-52
A2	Oklahoma (6)	L	78-86

\* Pacific-10 Conference game (17-1, 1st)

- (1) at Great Alaska Shootout, Anchorage, Alaska
- (2) at Valley Bank Fiesta Bowl Classic, Tucson, Ariz.
- (3) at Pac-10 Conference Tour., Tucson, Ariz.
- (4) at NCAA Tournament, Los Angeles, Calif.
- (5) at NCAA West Regional, Seattle, Wash.
- (6) at NCAA Final Four, Kansas City, Mo.

## 1988-89

Won 29, Lost 4

Coach: Lute Olson

Valley Bank Fiesta Bowl Classic Champions

Pacific-10 Conference Champions

Pac-10 Conference Tournament Champions

NCAA Tournament Participants

N30	New Mexico	W	80-67
D2	North Carolina (1)	L	72-79
D3	Temple (1)	W	68-50
D10	UNLV	W	86-75
D18	*Washington State	W	76-59
D20	*Washington	W	116-61
D23	*at Oregon State	W	73-69
D28	Loyola-Chicago (2)	W	106-82
D30	Pittsburgh (2)	W	88-62
J5	*at Stanford	L	78-83
J7	*at California	W	64-55
J12	*Oregon State	W	85-64
J14	*Oregon	W	95-71
J19	*at USC	W	97-69
J21	Villanova	W	75-67
J26	*at Arizona State	W	96-71
J29	*Stanford	W	72-52
F2	*California	W	86-59
F5	*at Washington	W	85-68
F9	*at Oregon	W	78-57
F12	at Oklahoma	L	80-82
F16	*USC	W	93-70
F18	*UCLA	W	102-64
F23	*Arizona State	W	109-74
F26	Duke (3)	W	77-75
M2	*at Washington State	W	74-48
M4	*at UCLA	W	89-86
M10	Washington State (4)	W	62-54
M11	Oregon State (4)	W	98-87

M12	Stanford (4)	W	73-51
M16	Robert Morris (5)	W	94-60
M18	Clemson (5)	W	94-68
M23	UNLV (6)	L	67-68
* Pacific-10 Conference game (17-1, 1st)			
(1) at Tournament of Champions, Charlotte, N.C.			
(2) at Valley Bank Fiesta Bowl Classic, Tucson, Ariz.			
(3) at Meadowlands Arena, East Rutherford, N.J.			
(4) at Pac-10 Conference Tour., Inglewood, Calif.			
(5) at NCAA Tournament, Boise, Idaho			
(6) at NCAA West Regional, Denver, Colo.			

## 1989

European Tour (All Exhibition Games)

Won 6, Lost 3

Coach: Lute Olson

My16	Villeurbanne, France	W	105-96
My18	Limoges, France	L	86-89
My20	W. Ger. Natl. @ Limburg	W	91-89
My22	W. Ger. Natl. @ Sindelfingen	L	83-85
My24	Estudiantes @ Madrid	W	99-95
My27	Caja Canarias		
@ Santa Cruz			
de La Palma (Canary I.)			
My29	Caja Canarias		
at Santa Cruz de			
Tenerife (Canary I.)			
My31	Cran Canaria, Las Palmas	W	99-74
Jn4	Spanish Natl. at Zaragoza	L	77-99

## 1989-90

Won 25, Lost 7

Coach: Lute Olson

Hall of Fame Tip-Off Classic Champions

Valley Bank Fiesta Bowl Classic Champions

Pacific-10 Conference Co-Champions

Pac-10 Conference Tournament Champions

NCAA Tournament Participants

N25	Michigan (1)	W	82-75
N30	*at Oregon	L	63-68
D2	*at Oregon State	L	61-84
D6	Northern Arizona	W	94-37
D19	Miami, Fla.	W	83-53
D28	Penn State (2)	W	74-55
D30	Purdue (2)	W	85-66
J2	*California (ot)	W	71-70
J4	*Washington	W	65-51
J6	*Washington State	W	81-61
J11	*at USC	W	90-75
J13	*at UCLA	L	67-73
J17	*at Arizona State	W	70-61
J20	Oklahoma	W	78-74
J25	*Stanford	W	68-61
J27	at Pittsburgh	L	92-100
F1	*at Washington State	W	66-62
F3	*at Washington	W	75-60
F8	*USC	W	95-70
F10	*UCLA	W	83-74
F15	*Arizona State	W	71-50
F18	at Nevada-Las Vegas	L	87-95
F21	*at California	W	93-68
F23	*at Stanford	W	80-61
F25	at Duke	L	76-78
M1	*Oregon	W	84-58
M3	*Oregon State	W	87-60
M9	USC (3)	W	80-57
M10	Stanford (3)	W	85-61
M11	UCLA (3)	W	94-78
M16	South Florida (4)	W	79-67
M18	Alabama (4)	L	55-77

\* Pacific-10 Conference game (15-3, T1st)

- (1) at Hall of Fame Tip-Off Classic, Springfield, Mass.
- (2) at Valley Bank Fiesta Bowl Classic, Tucson, Ariz.
- (3) at Pac-10 Conference Tour., Tempe, Ariz.
- (4) at NCAA Tournament, Long Beach, Calif.

## 1990-91

Won 28, Lost 7

Coach: Lute Olson

Dodge Preseason N.I.T. Champions

Valley Bank Fiesta Bowl Classic Champions

Pacific-10 Conference Champions

NCAA Tournament Participants

N14	Austin Peay (1)	W	122-80
N16	East Tennessee State (1)	W	88-79
N21	Notre Dame (2)	W	91-61
N23	Arkansas (2)	W	89-77
N26	Western Illinois	W	90-51
D1	Long Beach State	W	95-68
D5	at Northern Arizona	W	100-64
D8	at Louisiana State	L	82-92
D23	Providence	W	99-87

D27	Pepperdine (3)	W	80-66
D29	Iowa State (3)	W	102-77
J3	*at Washington	L	56-70
J5	*at Washington State	W	84-69
J10	*USC	W	87-85
J12	*UCLA	W	82-77
J17	*at Arizona State	W	74-71
J19	at Villanova	W	72-64
J24	*at Stanford	W	78-76
J26	*at California	L	78-85
J31	*Washington State	W	84-71
F2	*Washington	W	85-56
F7	*at USC	L	83-87
F10	*at UCLA (ot)	W	105-94
F13	*Arizona State	W	71-50
F17	Georgia Tech (4)	L	56-62
F21	*California	W	100-63
F24	Duke (2ot)	W	103-96
F26	*Stanford	W	89-51
F28	*at Oregon State	W	103-65
M2	*at Oregon	L	58-62
M7	*Oregon State	W	82-67
M9	*Oregon	W	107-65
M14	St. Francis, Pa. (5)	W	93-80
M16	Brigham Young (5)	W	76-61
M21	Seton Hall (6)	L	77-81

\* Pacific-10 Conference game (14-4, 1st)

- (1) at Preseason N.I.T., Tucson, Ariz.
- (2) at Preseason N.I.T., New York, N.Y.
- (3) at Valley Bank Fiesta Bowl Classic, Tucson, Ariz.
- (4) at Meadowlands Arena, East Rutherford, N.J.
- (5) at NCAA Tournament, Salt Lake City, Utah
- (6) at NCAA West Regional, Seattle, Wash.

## 1991-92

Won 24, Lost 7

Coach: Lute Olson

Hawaii Tip-Off Tournament Champions

Valley Bank Fiesta Bowl Classic Champions

7-Up Shootout Champions

NCAA Tournament Participants

N29	Dayton (1)	W	84-68
D1	Hawaii (1)	W	85-71
D7	Louisiana State	W	87-67
D14	at New Mexico	W	66-54
D18	Northern Arizona	W	122-81
D21	at Arkansas	L	59-65
D28	Evansville (2)	W	83-76
D30	Rutgers (2)	W	103-80
J2	New Orleans	W	82-64
J5	Santa Clara	W	79-60
J9	*USC	W	107-68
J11	*UCLA&	L	87-89
J16	*at Washington	L	60-62
J18	*at Washington State	W	78-65
J22	*Arizona State	W	92-65
J25	Pittsburgh	W	96-76
J30	*Oregon	W	104-53
F2	*Oregon State	W	86-58
F6	*at Stanford	W	72-70
F9	*at California	W	80-68
F13	*Washington State	W	94-72
F15	*Washington	W	85-51
F20	*at Arizona State	L	74-77
F23	Temple (3)	W	66-60
F27	*at Oregon	W	104-56
F29	*at Oregon State	W	70-62
M5	*California	W	100-77
M7	*Stanford	W	89-83
M12	*at UCLA	L	81-89
M14	*at USC	L	69-70
M20	East Tennessee State (4)	L	80-87



# Year-by-Year Results

## 1992-93

Won 24, Lost 4

Coach: Lute Olson

Valley Bank Fiesta Bowl Classic Champions

7-Up Shootout Champions

Pacific-10 Conference Champions

NCAA Tournament Participants

D6	Arkansas	L	80-86
D8	New Mexico	W	89-70
D12	Utah	W	78-64
D22	at Providence	L	66-81
D28	Delaware State (1)	W	92-52
D30	West Virginia (1)	W	75-74
J2	Rhode Island	W	87-79
J7	*at UCLA	W	82-80
J9	*at USC	W	81-73
J14	*Washington	W	93-76
J16	*Washington State	W	87-63
J20	*at Arizona State	W	91-87
J23	at New Orleans	W	72-69
J28	*at Oregon	W	92-60
J30	*at Oregon State	W	57-54
F4	*Stanford	W	96-61
F7	*California	W	93-81
F11	*at Washington State	W	70-64
F13	*at Washington	W	81-72
F18	*Arizona State	W	116-80
F21	Cincinnati (2)	W	70-60
F25	*Oregon State	W	81-70
F27	*Oregon	W	99-68
M4	*at California	L	71-74
M7	*at Stanford	W	94-80
M11	*USC	W	87-76
M13	*UCLA	W	99-80
M18	Santa Clara (1)	L	61-64

\* Pacific-10 Conference game (17-1, 1st)

(1) at Valley Bank Fiesta Bowl Classic, Tucson, Ariz.

(2) at 7-Up Shootout, Phoenix, Ariz.

(3) at NCAA Tournament, Salt Lake City, Utah

## 1993

Australian Tour (All Exhibition Games)

Won 9, Lost 1

Coach: Lute Olson

My17 Caltex Stars @ Auckland, NZW137-106

My19 Bendigo Braves

@ Bendigo, Aust. W 107-77

My20 N.B.L. All-Stars

@ Melbourne W 132-105

My22 S.E. Melbourne Magic L 104-109

My23 N. Melbourne Giants W 126-124

My25 Adelaide 36ers W 75-69

My26 Perth Wildcats W 120-107

My29 Brisbane Bullets W 109-100

Jn1 W. Sydney Slammers W 135-121

Jn3 Cairns Marlins W 114-84

## 1993-94

Won 29, Lost 6

Coach: Lute Olson

Dial Invitational Champions

Bank One Fiesta Bowl Classic Champions

7-Up Shootout Champions

Pacific-10 Conference Champions

NCAA Tournament Participants (Final Four)

N29	Baylor	W	106-79
D1	St. Joseph's, Pa.	W	93-73
D5	Oklahoma State (1)	W	97-84
D9	at Utah	W	88-81
D14	New Orleans	W	80-62
D18	at Santa Clara	W	89-63
D21	Notre Dame (2)	W	98-79
D22	Boston College (2)	W	70-65
D23	Kentucky (2)	L	92-93
D28	Fordham (3)	W	111-84
D30	Michigan (3)	W	119-95
J5	*Arizona State	W	98-81
J8	Marquette (4)	W	94-80
J13	*California (OT)	L	93-98
J15	*Stanford	W	89-72
J20	*at UCLA	L	66-74
J22	*at USC	W	83-74
J27	*Oregon	W	98-86
J29	*Oregon State	W	100-56
F3	*at Washington State	W	80-68
F5	*at Washington	L	69-74
F10	*at Stanford	W	77-60
F13	*at California	W	96-77
F17	*USC	W	94-61

F19	*UCLA	W	98-74
F24	*at Oregon State	W	96-69
F26	*at Oregon	W	75-71
M3	*Washington	W	95-62
M5	*Washington State	W	85-69
M12	*at Arizona State	L	87-94
M18	Loyola, Md. (5)	W	81-55
M20	Virginia (5)	W	71-58
M24	Louisville (6)	W	82-70
M26	Missouri (6)	W	92-72
A2	Arkansas (7)	L	82-91

\* Pacific-10 Conference game (14-4, 1st)

(1) at Dial Invitational, Phoenix, Ariz.

(2) at Maui Invitational, Lahaina, Hawaii

(3) at Valley Bank Fiesta Bowl Classic, Tucson, Ariz.

(4) at 7-Up Shootout, Tucson, Ariz.

(5) at NCAA Tournament, Sacramento, Calif.

(6) at NCAA West Regional, Los Angeles, Calif.

(7) at NCAA Final Four, Charlotte, N.C.

## 1994-95

Won 24, Lost 7

Coach: Lute Olson

Bank One Fiesta Bowl Classic Champions

NCAA Tournament Participants

N24	Minnesota (1)	L	70-72
N25	Alaska-Anchorage (1)	W	107-88
N26	Oklahoma State (1)	W	73-63
N30	Michigan (2)	W	78-57
D6	Florida State	W	96-78
D8	Houston	W	81-67
D12	La Salle	W	92-76
D18	at UTEP	W	75-61
D22	at Syracuse	L	84-94
D28	Richmond (3)	W	95-68
D30	Texas Tech (3)	W	88-82
J5	*at Arizona State	L	52-53
J7	at Rhode Island	W	82-67
J12	*at California	W	99-86
J14	*at Stanford (ot)	W	89-83
J19	*UCLA	L	61-71
J21	*USC	W	94-73
J26	*at Oregon	W	97-89
J28	*at Oregon State	W	111-98
F2	*Washington State	W	84-76
F4	*Washington	W	91-65
F9	*Stanford	W	84-73
F12	*California#	(W)	72-74
F16	*at USC	W	89-80
F18	*at UCLA	L	70-72
F23	*Oregon State	W	83-69
F25	*Oregon	W	97-76
M2	*at Washington State (2ot)	W	114-111
M4	*at Washington	W	63-54
M11	*Arizona State (2ot)	L	98-103
M16	Miami, Ohio (4)	L	62-71

\* Pacific-10 Conference game (13-5, 2nd)

(1) at Great Alaska Shootout, Anchorage, Alaska

(2) at Great Eight, Auburn Hills, Mich.

(3) at Bank One Fiesta Bowl Classic, Tucson, Ariz.

(4) at NCAA Tournament, Dayton, Ohio

# Game was changed to a win as a result of California's forfeit, per NCAA sanctions.

## 1995-96

Won 27, Lost 6

Coach: Lute Olson

Preseason N.I.T. Champions

Bank One Fiesta Bowl Classic Champions

7-Up Shootout Champions

NCAA Tournament Participants

N15	Long Beach State (1)	W	91-57
N17	at Arkansas (2)	W	83-73
N22	Michigan (3)	W	86-79
N24	Georgetown (3)	W	91-81
D2	at Houston	W	73-69
D5	Montana	W	84-66
D9	Towson State	W	90-84
D16	UTEP	W	90-70
D23	Syracuse	L	70-79
D28	Texas A&M (4)	W	88-44
D30	Rutgers (4)	W	79-70
J4	*at California#	(W)	75-99
J6	*at Stanford	L	71-80
J10	*Arizona State	W	108-76
J18	*USC	W	93-81
J20	*UCLA	W	88-79
J25	*at Oregon State	W	66-59
J27	*at Oregon	W	70-65

F1	*Washington (ot)	L	79-80
F3	*Washington State	W	96-78
F7	*at Arizona State	W	71-69
F11	Cincinnati (5)	W	79-76
F15	*at UCLA	L	75-76
F17	*at USC	W	86-72
F22	*Oregon	W	81-63
F24	*Oregon State	W	84-60
F29	*at Washington State	W	72-62
M3	*at Washington	W	67-65
M7	*Stanford	L	79-85
M9	*California	W	71-68
M15	Valparaiso (6)	W	90-51
M17	Iowa (6)	W	87-73
M22	Kansas (7)	L	80-83

\* Pacific-10 Conference game (13-5, 2nd)

(1) at Preseason N.I.T., Tucson, Ariz.

(2) at Preseason N.I.T., Fayetteville, Ark.

(3) at Preseason N.I.T., New York, N.Y.

(4) at Bank One Fiesta Bowl Classic, Tucson, Ariz.

(5) at 7-Up Shootout, Phoenix, Ariz.

(6) at NCAA Tournament, Tempe, Ariz.

(7) at NCAA West Regional, Denver, Colo.

# Game was later changed to a win as a result of California's forfeit, per NCAA sanctions.

## 1996-97

Won 25, Lost 9

Coach: Lute Olson

Hall of Fame Tip-Off Classic Champions

John Wooden Classic Champions

Bank One Fiesta Bowl Classic Champions

7-Up Shootout Champions

NCAA National Champions

N22	North Carolina (1)	W	83-72
N26	Northern Arizona	W	88-70
N30	at New Mexico	L	77-84
D7	Utah (2)	W	69-61
D9	Texas	W	83-78
D14	Jackson State	W	111-83
D21	at Michigan (ot)	L	71-73
D28	Robert Morris (3)	W	118-54
D30	Pennsylvania (3)	W	93-51
J2	*California	W	81-80
J4	*Stanford	W	76-75
J11	*at Arizona State	W	92-84
J16	*at USC	L	62-75
J18	*at UCLA (ot)	L	78-84
J23	*Oregon State	W	99-48
J25	*Oregon	W	88-68
J30	*at Washington State	W	87-78
F2	*at Washington	L	88-92
F5	*Arizona State	W	87-71
F9	Tulane (4)	W	81-62
F13	*UCLA	L	64-66
F15	*USC	W	101-77
F20	*at Oregon	L	72-78
F22	*at Oregon State	W	74-64
F27	*Washington State	W	100-86
M2	*Washington	W	103-82
M6	*at Stanford	L	80-81
M8	*at California (5)	L	77-79
M13	South Alabama (6)	W	65-57
M15	College of Charleston (6)	W	73-69
M21	Kansas (7)	W	85-82
M23	Providence (7) (ot)	W	96-92
M29	North Carolina (8)	W	66-58
M31	Kentucky (8) (ot)	W	84-79

\* Pacific-10 Conference game (11-7, 5th)

(1) at Hall of Fame Tip-Off Classic, Springfield, Mass.

(2) at John Wooden Classic, Anaheim, Calif.

(3) at Bank One Fiesta Bowl Classic, Tucson, Ariz.

(4) at 7-Up Shootout, Phoenix, Ariz.

(5) at Cow Palace, San Francisco, Calif.

(6) at NCAA Tournament, Memphis, Tenn.

(7) at NCAA Southeast Regional, Birmingham, Ala.

(8) at NCAA Final Four, Indianapolis, Ind.

## 1997

Australian Tour (All Exhibition Games)

Won 5, Lost 4

Coach: Lute Olson

My18 Sydney Kings (Ex.)

at Sydney Opera House W 33-30

My19 Australian U-22 @ Gosford L 85-86

My20 Australian U-22

@ Newcastle L 76-96

My21 Australian U-22 @ Sydney W 79-75

My24 Melbourne Tigers L 114-118

My26 CBA All-Stars @ Frankston W 89-82

My27 Adelaide 36ers W 83-81

My30 Perth Wildcats W 113-111

Jn3 Cairns Marlins W 96-89

Jn7 Melbourne Magic L 96-120

## 1997-98

Won 30, Lost 5

Coach: Lute Olson

Bank One Fiesta Bowl Classic Champions

Pacific-10 Conference Champions

NCAA Tournament Participants

N20	Morgan State	W	115-53
N24	Boston College (1)	W	99-69
N25	Kentucky (1)	W	89-74
N26	Duke (1)	L	87-95
N29	UNC-Asheville	W	97-69
D2	Kansas (2)	L	87-90
D6	at Texas	W	88-81
D8	at Baylor	W	83-68
D13	Coppin State	W	99-82
D23	at Florida State	L	79-84
D28	James Madison (3)	W	92-68
D30	Kansas State (3)	W	125-87
J3	*UCLA	W	87-75
J5	*USC	W	91-72
J8	*at Washington State (4)	W	94-81
J10	*at Washington	W	110-91
J15	*Arizona State	W	127-99
J18	New Mexico	W	89-70
J22	*Oregon	W	87-57
J25	*Oregon State	W	93-80
J29	*at Stanford	W	93-75
J31	*at California	W	70-57
F5	*Washington	W	112-81
F7	*Washington State	W	83-61
F14	*at Arizona State	W	83-82
F19	*at Oregon State	W	71-70
F21	*at Oregon	W	81-66
F26	*California	W	76-73
F28	*Stanford	W	90-58
M5	*at USC (ot)	L	90-91
M7	*at UCLA	W	91-87
M12	Nicholls State (5)	W	99-60
M14	Illinois State (5)	W	82-49
M19	Maryland (6)	W	87-79
M21	Utah (6)	L	51-76



# Year-by-Year Results

## 1998-99

Won 22, Lost 7

**Coach: Lute Olson**

Black Head Coaches Association Classic Champions

Southwest Showdown Champions

Las Vegas Shootout Champions

Bank One Fiesta Bowl Classic Champions

**NCAA Tournament Participants**

N13	Tennessee (1)	W	73-72
N25	Texas	W	73-57
N28	at Brigham Young (ot)	W	78-74
D5	Wyoming (2)	W	94-84
D14	UC-Irvine	W	93-70
D19	Iowa State (3)	W	75-61
D28	Holy Cross (4)	W	89-41
D30	Florida International (4)	W	91-75
J2	*at UCLA	L	75-82
J4	*at USC	W	87-78
J7	*Washington State	W	99-87
J9	*Washington	W	88-86
J14	*at Arizona State	W	74-73
J16	at New Mexico	L	78-79
J21	*at Oregon	W	85-83
J23	*at Oregon State	L	59-60
J28	*Stanford	W	79-78
J30	*California	W	91-74
F4	*at Washington	L	84-90
F6	*at Washington State	W	81-79
F10	*Arizona State	W	86-80
F13	Louisiana State	W	78-71
F18	*Oregon State	W	89-72
F20	*Oregon	W	92-86
F25	*at California	L	76-89
F27	*at Stanford	L	83-98
M4	*USC	W	88-73
M6	*UCLA	W	87-70
M12	Oklahoma (5)	L	60-61

\* Pacific-10 Conference game (13-5, 2nd)

(1) at Black Coaches Association Classic, Albuquerque, N.M.

(2) at Southwest Showdown, Phoenix, Ariz.

(3) at Las Vegas Shootout, Las Vegas, Nev.

(4) at Bank One Fiesta Bowl Classic, Tucson, Ariz.

(5) at NCAA Tournament, Milwaukee, Wis.

## 1999-2000

Won 27, Lost 7

**Coach: Lute Olson**

Preseason N.I.T. Champions

Las Vegas Showdown Champions

Bank One Fiesta Bowl Classic Champions

Pacific-10 Conference Co-Champions

**NCAA Tournament Participants**

N16	Kansas State (1)	W	88-69
N19	New Mexico State (1)	W	84-60
N24	Notre Dame (2)	W	76-60
N26	Kentucky (2)	W	63-51
D1	Brigham Young	W	86-62
D4	at Texas	W	88-81
D7	Connecticut (3)	L	69-79
D11	Michigan State	W	79-68
D13	IUPUI	W	70-41
D18	Nebraska (4)	W	80-59
D21	New Mexico	L	68-70
D28	UNC-Wilmington (5)	W	66-51
D30	Delaware (5)	W	89-77
J6	*at California	W	65-61
J8	*at Stanford	W	86-65
J13	*Washington State	W	80-75
J15	*Washington	W	69-62
J20	*at UCLA	W	76-61
J22	*at USC	L	72-80
J26	*at Arizona State	W	86-55
J29	at Louisiana State	L	60-86
F3	*Oregon	W	77-71
F5	*Oregon State	W	90-73
F10	*at Washington	W	65-56
F12	*at Washington State	W	73-50
F17	*USC	W	92-85
F19	*UCLA	W	99-84
F26	*Arizona State	W	89-82
M2	*at Oregon State (ot)	L	69-70
M4	*at Oregon	L	81-86
M9	*Stanford	W	86-81
M11	*California	W	70-61
M16	Jackson State (6)	W	71-47
M18	Wisconsin (6)	W	59-66

\* Pacific-10 Conference game (15-3, T1st)

(1) at Preseason N.I.T., Tucson, Ariz.

(2) at Preseason N.I.T., New York, N.Y.

(3) at Great Eight, Chicago, Ill.

(4) at Las Vegas Showdown, Las Vegas, Nev.

(5) at Bank One Fiesta Bowl Classic, Tucson, Ariz.

(6) at NCAA Tournament, Salt Lake City, Utah

## 2000-01

Won 28, Lost 8

**Coach: Lute Olson/Jim Rosborough**

Maui Invitational Champions

**NCAA Tournament Runners-Up (Final Four)**

N20	Chaminade (1)	W	97-57
N21	Dayton (1)	W	76-59
N22	Illinois (1)	W	79-76
N25	Purdue (2)	L	69-72
N29	Gonzaga	W	101-87
D2	Saint Mary's	W	101-41
D9	at Connecticut	L	69-71
D16	at Illinois (3)	L	73-81
D20	Louisiana State	W	88-75
D28	Butler (4)	W	72-60
D30	Mississippi State (4)	L	74-75
J4	*California	W	78-75
J6	*Stanford	L	76-85
J11	*at Washington State (5)	W	84-51
J13	*at Washington	W	89-64
J18	*USC	W	71-58
J20	*UCLA	W	88-63
J24	*Arizona State	W	86-75
J27	Texas	W	80-52
F1	*at Oregon	L	67-79
F3	*at Oregon State	W	68-41
F8	*Washington	W	82-62
F10	*Washington State	W	86-51
F15	*at UCLA (ot)	L	77-79
F17	*at USC	W	105-61
F21	*at Arizona State	W	88-58
M1	*Oregon State	W	65-54
M3	*Oregon	W	104-65
M8	*at Stanford	W	76-75
M10	*at California	W	78-76
M16	Eastern Illinois (6)	W	101-76
M18	Butler (6)	W	73-52

M23	Mississippi (7)	W	66-56
M25	Illinois (7)	W	87-81
M31	Michigan State (8)	W	80-61
A2	Duke (8)	L	72-82

\* Pacific-10 Conference game (15-3, 2nd)

(1) at Maui Invitational, Lahaina, Hawaii

(2) at Wooden Tradition, Indianapolis, Ind.

(3) at United Center, Chicago, Ill.

(4) at Bank One Fiesta Bowl Classic, Tucson, Ariz.

(5) at Spokane Arena, Spokane, Wash.

(6) at NCAA Tournament, Kansas City, Mo.

(7) at NCAA Midwest Regional, San Antonio, Texas

(8) at NCAA Final Four, Minneapolis, Minn.

## 2001-02

Won 24, Lost 10

**Coach: Lute Olson**

Coaches vs. Cancer IKON Classic Champions

Southwest Showdown Champions

John R. Wooden Classic Champions

Fiesta Bowl Classic Honoring Bobbi Olson Champions

**Pac-10 Conference Tournament Champions**

**NCAA Tournament Participants**

N8	vs. Maryland (1)	W	71-67
N9	vs. Florida (1)	W	75-71
N17	at Texas	W	88-74
D1	Kansas	L	97-105
D4	vs. Illinois (2)	W	87-82
D8	vs. Purdue (3)	W	79-66
D15	at Michigan State	L	60-74
D20	*at Oregon State	W	76-73
D22	*at Oregon	L	75-105
D28	Pepperdine (4)	W	94-71
D30	Valparaiso (4)	W	74-70
J4	*Oregon	L	80-90
J6	*Oregon State	W	93-87
J10	*at Washington State	W	92-85
J12	*at Washington	W	74-69
J17	*USC	W	97-80
J19	*UCLA	W	96-86
J23	*at Arizona State	L	72-88
J26	Connecticut (ot)	L	98-100
J31	*at California	W	68-58
F2	*at Stanford (ot)	W	88-82
F7	*Washington	W	91-82
F9	*Washington State	W	85-68
F14	*at UCLA	L	76-77
F16	*at USC	L	89-94
F20	*Arizona State	W	83-75
F28	*Stanford	L	71-76
M2	*California	W	99-53
M7	vs. Arizona State (5)	W	73-56
M8	vs. California (5)	W	90-78
M9	vs. USC (5)	W	81-71
M14	vs. UC-Santa Barbara (6)	W	86-81
M16	vs. Wyoming (6)	W	68-60
M21	vs. Oklahoma (7)	L	67-88

\* Pacific-10 Conference game (12-6, T2nd)

(1) at Coaches vs. Cancer IKON Classic, New York, N.Y.

(2) at Southwest Showdown, Phoenix, Ariz.

(3) at John R. Wooden Classic, Anaheim, Calif.

(4) Fiesta Bowl Classic honoring Bobbi Olson, Tucson, Ariz.

(5) at Pac-10 Tournament, Los Angeles, Calif.

(6) NCAA First/Second Rounds, Albuquerque, N.M.

(7) NCAA West Regional, San Jose, Calif.

## 2002

**Australian Tour (All Exhibition Games)**

Won 8, Lost 2

**Coach: Lute Olson**

My14	Canberra All-Stars	W	101-99
My16	Sturt Sabres	W	109-98
My20	Dandenong Rangers	W	107-89
My22	Knox Raiders	L	95-97
My23	Sydney Kings	W	113-84
My24	Sydney Kings	L	116-123
My26	Brisbane Bullets	W	98-90
My29	Kuiyam Pride	W	95-84
My30	Cairns Marlins	W	114-96
Jun1	Sydney Kings (ot)	W	115-113

## 2002-03

Won 28, Lost 4

**Coach: Lute Olson**

Fiesta Bowl Classic Honoring Bobbi Olson Champions

**Pac-10 Conference Champions**

**NCAA Tournament Participants**

N23	Western Kentucky	W	107-68
N27	Northern Arizona	W	101-66
D3	Saint Louis	W	91-58
D7	at San Diego State	W	89-81
D15	Texas	W	73-70
D21	at Louisiana State	L	65-66
D28	Davidson (1)	W	95-69
D30	Boston University (1)	W	85-71
J2	*at Oregon	W	81-72
J4	*at Oregon State	W	80-65
J9	*Washington State	W	82-69
J11	*Washington	W	79-61
J16	*at USC	W	81-72
J18	*at UCLA	W	87-52
J22	*Arizona State	W	71-63
J25	at Kansas	W	91-74
J30	*Stanford	L	77-82
F1	*California	W	95-80
F6	*at Washington (ot)	W	88-85
F8	*at Washington State	W	75-62
F13	*UCLA	W	106-70
F15	*USC	W	86-59
F22	*at Arizona State	W	92-72
F27	*at California	W	88-75
M1	*at Stanford	W	72-69
M6	*Oregon State	W	72-60
M8	*Oregon	W	88-80
M13	UCLA (2) (ot)	L	89-96
M20	Vermont (3)	W	80-51
M22	Gonzaga (3) (2ot)	W	96-95
M27	Notre Dame (4)	W	88-71
M29	Kansas (4)	L	75-78

\* Pacific-10 Conference game (17-1, 1st)

(1) Fiesta Bowl Classic honoring Bobbi Olson, Tucson, Ariz.

(2) at Pac-10 Tournament, Los Angeles, Calif.

(3) NCAA First/Second Rounds, Salt Lake City, Utah

(4) NCAA West Regional, Anaheim, Calif.



# Arizona Lettermen

( ) Captain

## A-

Abbot, Howard, 1932, 33, 34  
 Aboud, Michael, 1965, 66, (67)  
**Adams, Hassan, 2003**  
 Albright, Dennis G., 1963, 65  
 Aleksa, Robert, 1975, 76  
 Allen, Ronald S., 1973, (74)  
 Allin, Thomas R., 1941, 42  
 Anderson, Bruce D., 1970, 71, (72)  
 Anderson, Rick, 1999, 2000, (02) (03)  
 Anderson, Warren A., 1970  
 Arenas, Gilbert, 2000, 01  
 Ash, John, 1997, 99, 00, 01

## B-

Baldwin, Cecil Eugene, 1957  
 Ballantyne, Thomas M., 1942, 43, 44, 46, 47  
 Balsley, Sam (Mgr.) 1965, 66  
 Barkley, John D. (Mgr.) 1956  
 Barmentloo, Marty, 1995  
 Barnes, Richard L., 1970  
 Barrett, James T., 1912  
 Barringer, John B., 1936, 37  
 Barthels, Kendrick A., 1936  
 Beach, Charles F., 1913  
 Belobraydic, John M., 1979, 80, 81, 83  
 Bergman, Craig J., 1988  
 Berman, H. Robert, 1918  
 Berra, Carl, 1938, 39, (40)  
 Bibby, Mike, 1997, 98  
 Biggs, John, 1935  
 Birkner, Hugo Ernest, (1907)  
 Black, John Russell, 1939, 40, 41  
 Black, William Thomas, 1944  
 Blades, Ernest O., 1907, 08, 09, (10)  
 Blair, Joseph J., 1993, 94, 95, 96  
 Blankinship, James Darrell, 1955  
 Blevins, Leon G., 1949, (50)  
 Bliss, Edward (Mgr.) 1926  
 Bohannon, Etdrick S., 1993  
 Booker, George Vance, 1923  
 Borodkin, Marvin, 1942, 43, (46), 47  
 Bowen, Harold, (Mgr.) 1924  
 Brackenbury, Richard A., 1916, 17  
 Bradford, Hubert, 1905  
 Bramlett, A.J., 1996, 97, 98, (99)  
 Brautigan, Roger, 1966  
 Breck, William D., 1962, 63, 64  
 Brittain, James A., 1959  
 Broadwater, Forrest Ronald, 1932  
 Brooke, Paul C., 1917  
 Brooke, Eddie E. (Mgr.) 1927  
 Brooks, Kenneth (Mgr.) 1968,69  
 Brookshier, Frank A., 1924, 25, (26), (27)  
 Brower, James E., 1953, 54, (55)  
 Brown, Andy, 1994  
 Brown, Charles Owen, Jr., (1905), (06)  
 Brown, J. Duncan, 1927  
 Brown, Lawrence A., 1954  
 Brown, Roger G., 1918  
 Brown, Russell K., 1978, 79, 80, (81)  
 Bruner, John M., 1952, 53, (54)  
 Brunkhorst, Brock, 1982, 83, 84, (85)  
 Buechler, Judson D., 1987, 88, 89, (90)  
 Burns, David J., 1974, (75)

Bush, Julius Ralph, 1918  
 Butts, Horatio Cotter, 1926  
 Bynum, Will, 2002  
 Byrne, Vincent R., 1932, 33, 34

## C-

Capps, Clarence R., 1945  
 Carroll, Arthur, 1949, 51  
 Case, Travis J., 1951, 53  
 Castles, John, (Mgr), 1999, 00, 01, 02, 03  
 Cherry, Joe Wesley, 1947, 48, 49  
 Christy, Marshall, (Mgr.) 1933  
 Clark, Marvin Carl, 1923, 24, (25)  
 Clarke, Dan W., 1937, 38, (39)  
 Clausen, Monte C., 1961, 62, 63  
 Clemeons, Phillip, 1919  
 Cloud, Leo Fredrick, 1911, 12, 13, 14, (15)  
 Cochran, Horace Merle, 1912, 13  
 Collins, Jeff, 1981  
 Coltrin, Marion J., 1936, 37  
 Conner, Jon C., 1958, 59, (60)  
 Conway, Joseph W., 1919  
 Conway, Raymond W., 1937, 38, 39  
 Cook, Anthony L., 1986, 87, 88, (89)  
 Cook, Charles E., 1964  
 Cook, Greg, 1982  
 Cooke, Troy, 1983, 84  
 Cooper, Eric E., 1986  
 Cox, Leander, Jr., 1938, 40  
 Coyle, Terence M., 1955, 56, 57  
 Crawford, Jon A., 1959  
 Crismon, Edgar T., 1931, 32, (33)  
 Crouch, Cecil James, 1948, 50  
 Crouch, Robert E., 1925, 26, 27  
 Crum, Hillard H. Jr., 1946, 47, 48, (49)  
 Cellen, Albert Vincent, 1941, (42), 43  
 Culin, John Harding, 1907, 08  
 Curry, Ron, 1989  
 Cushman, John F., 1956

## D-

Daasch, Edward F., 1963 (Mgr.), 64 (Mgr.),65  
 Danley, Alonzo Lee, 1937, 38, 39  
 Dauk, Regis A., 1961, 62, 63  
 Davis, Ben, 1995, (96)  
 David, Brian, L., 1987, 89, 90  
 Davis, Frank, 1934 (Mgr.), 35 (Mgr.)  
 Davis, Ronald D., 1980, 81  
 Davis, William D., 1967, (68)  
 Davis, William Kenny, 1977, 78  
 Davison, Bennett, 1997, 98  
 Decker, Wm. J., 1962  
 DeFrancesco, Salvatore J., (Sam), 1955 (Mgr.)  
 Demic, Lawrence C., 1976, 77, 78, (79)  
 Dermody, Richard L., 1942, 43, 44  
 Dickerson, Michael, 1995, 96, (97), (98)  
 Dicus, Waldo M., 1928, 29, (30)  
 Diebold, Theodore R., 1927  
 DiGrazia, M. Lorry, 1936, 37, 38  
 Dillon, Jerome L., 1951, 52  
 Donnelly, Raymond E., 1979, 80  
 Donovan, Tom, 1943  
 Doolen, Edward W., 1963, 64, 65  
 Dosty, Robbie Dean, 1978, 80, 81  
 Douglas, Ruben, 1999  
 Doyle, James Perry, 1919

Drachman, Byron C., 1926  
 Drucker, Melvyn, (Mgr.) 1960  
 Dunlap, James E., 1950, 52, 53  
 Dutt, Marvin Alvin, 1960, (61)  
 Duwe, Heman A., 1934, 35

## E-

Eafon, Kelvin, 1995, 96  
 Echols, Randall E., 1973  
 Eddy, Jackson R., 1953, 54  
 Edgar, John, 1985, (86)  
 Edgerton, Ambrose Earl, 1907, 08  
 Edgerson, Eugene, 1997, 98, 99, (2001)  
 Edwards, Lawrence, 1928  
 Edwards, Philip C., 1971, 72, 73  
 Ehlmann, Thomas, 1975  
 Elder, William David, 1946  
 Elliott, Lloyd Creighton, 1911, 13  
 Elliott, Robert A., 1974, 75, 76, (77)  
 Elliott, Sean M., 1986, 87, 88,(89)  
 Enke, Fred William, 1946, 47, (48)  
 Ensor, Ken, 1983, 84  
 Eppler, James F., 1956, 57  
 Erdhaus, J. Fred, 1939  
 Ewald, Larry Douglas, 1958

## F-

Farman, Richard R., (Mgr.) 1962  
 Fella, Anas, 2002  
 Fickett, Webster L., 1914  
 Filbrun, Davis Eugene, 1932, 33, 34  
 Flake, William Lindsey, 1940, 41  
 Flanagan, Kevin T., 1991, 92, 93, (94)  
 Flannery, John B., (Mgr.) 1954  
 Fleming, Albert Jr., 1973, 74, 75, (76)  
 Flynn, Wesley T., 1961, 62, (63)  
 Forbes, Joyce E., 1962  
 Foster, Michael E., 1968, 69, (70)  
 Fox, Harvey B., 1964, 65, (66)  
**Fox, Isaiah, 2002, 03**  
 Fraser, Bruce T., 1985, 86, 87  
 Frazier, Lamont, 2001  
**Frye, Channing, 2002, 03**  
 Fuller, Ronald, 1976

## G-

Garcia, Rudolph R., (Mgr.) 1962  
 Gardner, Jason, 2000, 01, (02), (03)  
 Gardner, L. Scott, 1972  
 Gatchel, Donald G., 1940, 41  
 Geary, Reginald E., 1993, 94, 95, (96)  
 Geldmacher, Jay L., 1974  
 Genesen, Barry, (Mgr.) 1964  
 Genung, George Farrell,1942,(43),(44),46,47  
 Gibbings, Frank Tom, 1924, 26  
 Gillem, Alvan Cullam,Jr., 1907, 08  
 Gitles, Gerald A., (Mgr.) 1952  
 Gladney, Jerome C., 1974, 75, 76, 77





# Arizona Lettermen

Glennon, Joseph Henry, 1913  
Goar, H. Lionel, 1956, 57  
Goar, Leon O., 1955  
Goodman, A. Harold, (1945), 46  
Goodman, Neil Nathaniel, 1929, (30)  
Goodwin, Gordon Austin, 1920, 21  
Gordy, Leonard, 1974, 75, 76, (77)  
Graham, John O., 1931  
Gray, Harry J., 1931  
Greene, Bradley W., 1967, 68  
Greene, George E., 1949, 50  
Greenfield, Tom Guy, 1937, 38  
Gridley, Rollin T., 1925, 26, 27  
Grimes, Stanley E., (Mgr.) 1956, (Mgr.) 57  
Grossetta, Warren Arthur, 1908, (Mgr.) 09

## H-

Hall, Robert Lakenan, 1944  
Ham, Cox, (Mgr.) 1940  
Hanour, Travis, 2001  
Hansen, James E., 1967, 68, (69)  
Hansen, Peter, 2002  
Hansen, Robert L., 1964, 65, (66)  
Harbour, John L., 1968, 69  
Hargis, William, 1930  
Harper, Wilmer Eugene, 1939, 40, (41)  
Harris, Donnell, 1996, 97, 98  
Harris, Russell, 2000  
Harrington, Richard, (Mgr.) 1959, 60  
Harris, Herman B., 1974, 75, 76, (77)  
Harris, Lawrence R., 1962, 63, 64  
Harris, Lynard, 1972, (73)  
Harrison, Gary L., 1975, 76, 77  
Hartman, Minor Louis, 1911  
Haskin, David, 1983, 84, 85, 86  
Hatcher, Burrell Richard, 1905, 07  
Hawthorne, George N., 1979, 80  
Hayes, Francis Robert., (Mgr.)  
Hayhurst, Normal Clifton, 1912, (13), (Mgr.) 14  
Held, Eddie Charles, 1938  
Helm, Hugh Max, 1942, 43  
Helm, Walter M., 1936, 37, (38)  
Henderson, Ronald Clyde  
Herndon, James Prugh, 1917, 18, (19)  
Hobbs, John Cole, 1920, 22, 23  
Honea, Robert L., 1949, 50, (51)  
Hopkins, Robert Louis, 1957, 58, (59)  
Howell, Jack R., 1949, 51, 52  
Howell, Robert E., 1954  
Huckestein, James W., 1971, (72)  
Hudak, William C., (Mgr.) 1954, 56  
Hull, T.Gordon, 1924

## I-

### Iguodala, Andre, 2003

Inglis, David L., 1953, 56  
Irvine, Wm.C., (Mgr.) 1950  
Irving, John L., 1973  
Iselin, Albin A., (1918)  
Islas, Oscar H., 1952, 54

## J-

Jack, William Christian, 1934  
Jackson, George Dewar, 1936, 37, 38  
Jackson, Keith, 1982, 83, 84, 85  
Jacobs, Gerald T., 1965

Jacobs, Rolf A., 1985, 86  
Jacoby, David Theodore, 1921  
Jefferson, Richard, 1999, 2000, 01  
Jenkins, Ortege, 1998  
Johnson, Albert J., 1963, 64, 65  
Johns, Cliff, 1993  
Johnson, Deron, 1991, 92  
Johnson, George, 1932, 33, (34)  
Johnson, Leo C., 1949, 50, (51)  
Johnson, Roger E., 1950, 51, (52)  
Johnson, Samuel H., 1936, 38, 39  
Johnston, James H., 1950  
Jones, Mitchell E., 1976, 78  
Jones, Percy Wonsion, 1907  
Jones, Robin, (Mgr.) 1970, 71, 72  
Jordan, George Bernie, 1938, 39, (40)  
Jordan, Robert C., 1960  
Jung, Brian E., 1976, 77  
Jung, Mark, 1982

## K-

Kain, Sidney L., 1952, 53  
Kannner, Steven M., (1975)  
Kelley, Jarvis, 1994  
Kemmeries, William F., 1951, 52, (53)  
Kentz, Joe, (Mgr.) 1967, (Mgr.) 68  
Kerr, Steven D., 1984, 85, (86), (88)  
Kinkade, Kevin W., 1975  
Kordik, Michael W., (1968)  
Kurtz, Ken Joe, 1965

## L-

Lampner, Leon, (Mgr.) 1945  
Larson, Bruce Alan, 1949, 50  
Latimore, Dennis, 2002  
LaVetter, Charles N., 1964  
Lavoy, Thomas O., 1963, 64, 65  
Lawson, Thomas E., 1972, (73)  
LaZar, Arthur M., 1961  
Lazovich, Eli S., 1952, 53, 54, (55)  
Lee, Jason, 1997  
Lee, Thomas C., 1969, 70, (71)  
Lee, N. Warner, 1959, 60  
Leftault, Charles J., 1952, 53  
Leiber, Henry Edward, 1931  
Leshner, Charles Zaner, 1916  
Lester, Walter Coyle, 1924, 26  
Lewis, John William, 1905  
Lindstrom, E.Gordon, 1967, 68  
Lloyd, Gregory, 1976  
Lockling, Bret Harlow, 1920, 21, (22)  
Lofton, Kenneth, 1986, 87, 88, 89  
Low, John H., (Mgr.) 1942, (Mgr.) 43  
Lubbers, Earl R., 1957  
Lutich, Balbo J., 1951  
Lutz, Cedric, (Mgr.) 1932

## Mc-

McAndrew, Patrick F., 1966  
McCray, Ernest C., 1958, 59, (60)  
McIntyre, John Jacob, 1946, 48  
McKinney, Walter, 1969, 70, 71  
McLean, Joseph R., 1993, 94, 95, (96)  
McMillan, Craig S., 1985, 86, 87, 88  
McSherry, Frank J., 1916, 17

## M-

Mack, Francis C., 1912, 13, (Mgr.), 15  
Maffeo, James Stephen, 1914, 15 (Mgr) 16, (17)  
Magno, Jack, 1982  
Mann, William Gibson, 1947, 48, (49)  
Marsh, Chester L., 1925, 26  
Marshall, Timothy D., 1976, 77, 78  
Mason, Harvey J., 1987, 88, 89, 90  
Matulis, Adolph John, 1941  
Maxey, Sylvester A., 1976  
Maxwell, Robert E. Jr., 1959  
Mellon, Donald E., 1980, 82, 83  
Metz, Dean L., 1955, 56  
Mikla, Tony, (Mgr.) 1998, 99, 00, 01, 02  
Millar, Leslie Creighton, 1908, 09, 10  
Miller, Charles W., 1925, 26, 27  
Miller, Charles W., 1980, 81, 82  
Miller, John Robert, 1942, 43, 44  
Mills, Christopher L., 1991, 92, (93)  
Ming, Marcus Aurelius Smith, (Mgr.) 1961  
Mitchell, Lanny R., 1970, 71  
Mitchell, Wm., (Mgr.) 1961  
Moe, Richard L., (Mgr.) 1961  
Money, Eric V., 1973, (74)  
Morales, Tony Leyva, 1947, 48, 50  
Morris, Lawrence Charles, 1917  
Mosebar, David P., 1980  
Mower, Richard Lee, 1957, 58, (59)  
Muehlebach, Lawrence M., 1988, 89, 90, (91)  
Mueller, Robert Louis, 1956, 57, 58  
Murphy, Jack, (Mgr.) 1999, 00, 01, 02, 03  
Myers, Eddie M., 1969, 70, 71  
Myles, Gilbert, 1975, 76, 77

## N-

Naegle, Raymond Lynn, 1940  
Nehls, Joseph A., 1978, 79, (80)  
Nelson, Myron, 1929, 30, (31)  
Newsome, John, 1966, 67  
Nordyke, Spencer P., (Mgr.), 1930  
Norman, Coniel, 1973, (74)  
Norris, William H. Jr., 1972  
Nymeyer, Edward Fred, 1956, 57, (58)

## O-

O'Donald, William A., 1955, 56, 57  
O'Haco, Michael, 1941  
Oldham, James R., 1925  
Oosterveen, Ernest, 1955, 56  
Othick, Matt, 1989, 90, 91, (92)  
Owes, Raymond, 1992, 93, 94, (95)

## P-

Pace, Roy, (Mgr.) 1925  
Padelford, John Carlton Jr., 1943, 47, (48)  
Palm, Robert, 1935  
Pastner, Josh, 1997, 98, 99, 2000  
Patten, Eugene V., 1924  
Patten, Harold A., 1928, 29, 30  
Penner, Paul H., 1950  
Peterson, Charles Phillip, 1945  
Peterson, Wiley K., 1928  
Peyton, David, (Mgr.) 1954  
Phelps, Wilford W., 1916, 17  
Pickett, Theodis, 1964, 65, 66  
Pistor, William Jacob, 1919, 20, 21, 22



# Arizona Lettermen

Pitts, Wm. E., (Mgr.) 1954  
Ponsford, George A., 1932, 33, 34  
Porter, Todd, 1983  
Porter, William A., 1915, 16  
Post, James, (Mgr.) 2000, 01, 02  
Preininger, Clair B., 1935  
Pryce, William M., 1928

## R-

Rachim, Abe, (Mgr.) 1937  
Raffety, Jack, 1931, (32)  
**Ranne, Jason, 2001, 02, 03**  
Rappis, James M., 1973, 74, 75, (76)  
Reagor, Ralph D., 1935  
Rebstock, Duane, 1909 (Mgr.), 10, 11  
Redd, Hadie, 1954, 55  
Redfern, Milton L., 1927, 28  
Reeves, Khalid, 1991, 92, 93, (94)  
Reeves, Robert William, 1955, (56), (57)  
Reynolds, A.S., (Mgr.) 1948, (Mgr.) 50  
Rhodes, Ralph Lyman, 1913, 14  
Rhodes, Raymond L., (Mgr.), 1948, 49  
Rhodes, William A., (Mgr.) 2958  
Richey, Jason, 1994  
Richmond, Lincoln A., 1944, 46, (47), 48, 49  
Ricks, Claude Lee, Jr., (Mgr.) 1947, (Mgr.) 48  
Ridge, Warren C., 1956, 57, (58)  
Ridgway, George Richard, 1929, 30, (31)  
Rigdon, Dylan M., 1993, 94  
Riggs, John D., 1930  
Robertson, George B., (1909)  
Robinson, Dwayne M., 1937  
Rochlin, Abraham, (Mgr.) 1937  
**Rodgers, Chris, 2003**  
Rooks, Sean Lester, 1989, 90, 91, (92)  
Root, Richard A., 1966, 67, 67  
Rosborough, Greg, 2002 (Mgr.)  
Rountree, George, 1953, 54, (55)  
Ruman, Robert P., 1941, (42), 43  
Rustand, Warren S., 1963, (64), 65

## S-

Salazar, Jose Urbano, 1907, (08), 10  
Sancet, Frank, 1929  
Schlebaum, Wm. Michael, 1958  
Schmidt, Casey, 1990, 91  
Scholtzhauer, Walter S., (1935), 36  
Schuff, David A., 1951  
Schwertley, Michael, 2000, 02  
Scott, Gregg, 1983  
Scurlock, Dan A., 1961  
Seal, James G., 1959  
Seigle, Kenneth Garland, 1937, 39  
Sessions, Alm Preston, 1913, 14, 15, (16)  
Shoemaker, Tom R., 1951  
Sieger, Elias, 1948  
Silverstein, Louis, 1944, 46  
Simon, Miles, 1995, 96, (97), (98)  
Sirriner, George Keith, 1945  
Skaisgir, Joseph G., 1961, (62)  
Skousen, Clarence, 1925  
Slonaker, Alter L., 1918, 19, (20)  
Smallwood, Eugene E., (Mgr.) 1951  
Smith, Clarence J., Jr. (Mgr.) 1951  
Smith, Eddie, (1984), 85

Smith, Frank H., Jr., 1980, 81, (82), 83  
Smith, John A., 1978, 79, 80, 81  
Smitheran, William R., 1953, 54  
Sorenson, George, 1927, (28), (29)  
Souter, James, (Mgr.) 1958, (Mgr.) 50  
Spahn, Robert G., 1964, 65, (66)  
Spaulding, George Frederick, (1911)  
Stamps, Roland A., 1968  
Stanton, Allan Jaynes, 1951, 52  
Steele, James Charles, 1945  
Stevens, Russell L., 1960, 61  
Stevens, Sam S., 1946  
Stewart, Jason, 1997, 98, 99  
Stewart, Jesse Hobson, 1905  
Stokes, Edward K., 1990, 91, 92, 93  
Stoudamire, Damon, 1992, 93, (94), (95)  
**Stoudamire, Salim, 2002, 03**  
Strigel, J. Donald, 1928, 29, 30  
Strong, Leon Henri, 1909  
Strong, Paul A., 1972, 73  
Sullivan, James Daniel, (1912)  
Sutton, Tom, 1966  
Swick-Vialo, Mitchell, 1930

## T-

Tait, Michael, 1984  
Taylor, Greg, 1983  
Taylor, Morgan, 1983, 85  
Taylor, Philip E., 1975, 76, 77, (78)  
Tebbs, Quynn, 1998  
Terry, Jason, 1996, 97, 98, (99)  
Tewksbury, Raymond W., 1931  
Thomas, Robert Russell, 1921, 22, 23, 24  
Thomason, Austin, 1931  
Thompson, Arthur Perry, (Mgr.) 1908  
Tolbert, Byron Thomas, 1987, 88  
Thompson, Harvey, 1982, 83, 84  
**Torres, Filberto, 2002, 03**  
Tovrea, Harold Charles, 1921, 22, (23), (24)  
Tovrea, J. Howard, (Mgr.) 1928  
Trask, Willaim T., (Mgr.) 1970  
Treat, James M., (Mgr.) 1972  
Triniman, Richard, 1923  
Troutt, Maurice Kenneth, 1949, 50  
Troutz, Andrew Jack, 1946  
Truman, Irvong F., 1913, 14  
Turley, Harold E., 1934, 35  
Turner, Joe L., 1985, 86, 87, 88  
Turner, John M. (Pat), 1936  
Turner, John W. Jr., 1930

## U-

Udall, Calvin H., 1945  
Udall, Morris K., 1942, (47), 48  
Udall, Stewart Lee, 1939, 40, 46  
Ugrin, John A., 1969, 71  
Underhill, Howard Lawrence Talcott, 1911 (Mgr.), 12

## V-

Van Atta, Thomas A., (Mgr.) 1955  
Van Coevering, James, 1969, 70  
Van Dusan, Robert E., 1923  
Van Hook, Jack R., 1936  
Vialo, Mitchell Swick, 1930  
Vickers, Elmer Francis Jr., 1934, 35, (36)  
Vlahogorge, John, 1982

## W-

Wagner, Joseph William, 1955, (56)  
Wakefield, James H., 1973, 74  
Walker, Rickey, 1982  
Wallace, Thomas Jay, 1918, 19, (21), 22  
Walters, Charles N., (Mgr.) 1936  
Walton, Luke, 2000, 01, (02), (03)  
Warford, Ralph Elmo, 1935, 36, (37)  
Warner, William, 1969, 70, 71  
Warnock, Harold Charles, 1932, 33, 34  
Washington, Herbert A., 1907  
Webb, Wilber C., 1930  
Weese, Charles Wm., 1960, (61)  
Welton, Rex M., 1967, 68, 69  
Weigl, Nathan (Mgr.), 2001, 02, 03  
Wessel, Justin, 1998, 99, 2000, (01)  
Westfall, Leslie, 1940, 41, 42  
Wheatley, Bruce M., 1986  
Williams, Brian C., 1990, 91  
Williams, Corey, 1993, 94, 95, (96)  
Williams, Joe (Mgr.), 2002, 03  
Williams, Peter, (1984), 85  
Williams, Thomas, 1977, 78  
Wilson, Gordon Kenneth, 1954  
Wilson, Puntus, 1983  
Wilson, Traves, 1999  
Winters, Ralph Curtis, 1935  
Wolfen, Hugh M., 1907  
Womack, Wayne, 1989, 90, 91, (92)  
Wood, Osie Leon III, 1980  
Wooddell, Charles Edward, 1905  
Woods, Loren, 2000, (01)  
Wright, Michael, 1999, 2000, 01  
Wuerderman, Emil K., 1905  
Wuerderman, Walter Henry, 1910

## Y-

Young, Robert Kirk, 1960, 61, 62  
Yurkovich, Dan, 1945

## Z-

Zahn, Andrew, 2002  
Zeller, Miles Murton, 1959  
Zeno, Michael G., 1979

**Active Players are listed in Bold.**





# McKale Memorial Center

The opening of McKale Memorial Center in February of 1973 marked a new era in Wildcat basketball. After playing several games in front of crowds of a few thousand in Bear Down Gym to open the 1972-73 season, the team moved to McKale and literally filled the upscale arena overnight with crowds over 11,000 from the beginning.

Named after the late J.F. "Pop" McKale, athletic director and coach from 1914 to 1957, the facility is just part of a series of showcase athletic facilities located on the extreme eastern edge of campus. It is situated off the UA mall, adjacent to Arizona Stadium, baseball's Sancet Field and the Hillenbrand Aquatic Center. McKale houses the offices for the entire athletic department and is currently undergoing a renovation and addition that has added a state-of-the-art 24,000 square foot weight room, 10,000 square foot athletic training facility, and new

lockerrooms within the Eddie Lynch Athletics Pavilion, including the Jim Click Hall of Champions, all located at the north end of the building.

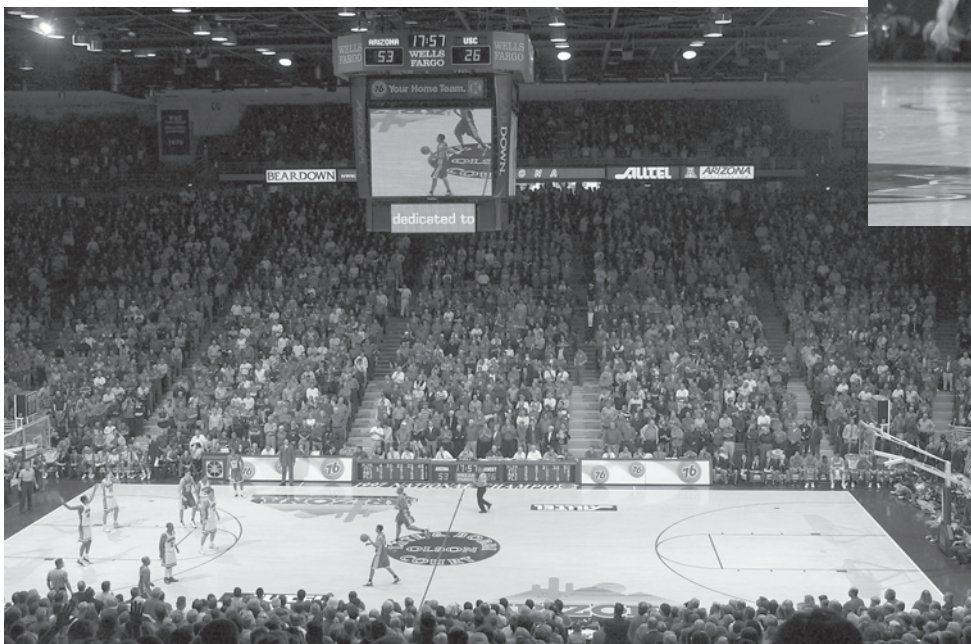
Following the Arizona State game on February 26, 2000, the University of Arizona

athletic department honored head coach Lute Olson with a ceremony to name the McKale Center floor, "Lute Olson Court". Then, during a memorial service in January of 2001 for Olson's late wife, Bobbi, it was renamed, "Lute and Bobbi Olson Court" in recognition of the couple's impact on the university and the city of Tucson. Olson has led seven teams to undefeated seasons at home, and Arizona has led the Pac-10 in attendance every year since 1984-85.

Part of the attraction for fans is the winning tradition that was quickly established in McKale. Arizona defeated WAC rival Wyoming, 87-69, in the first varsity event on Feb. 1, 1973, and went on to win 67 of the first 70 contests in McKale. Then, from 1987-1992, Arizona put together the tenth-best home court winning streak in NCAA history, winning 71 consecutive

games in McKale and making tickets nearly impossible to find. By the time UCLA snapped the string on Jan. 11, 1992 with an 89-87 upset of the Cats, there was rarely an empty seat in McKale for any game.

The McKale Center's tradition of excellence grows stronger as the Wildcats continue to win games in front of sell-out crowds. All told, Arizona has a 388-72 (.843) record

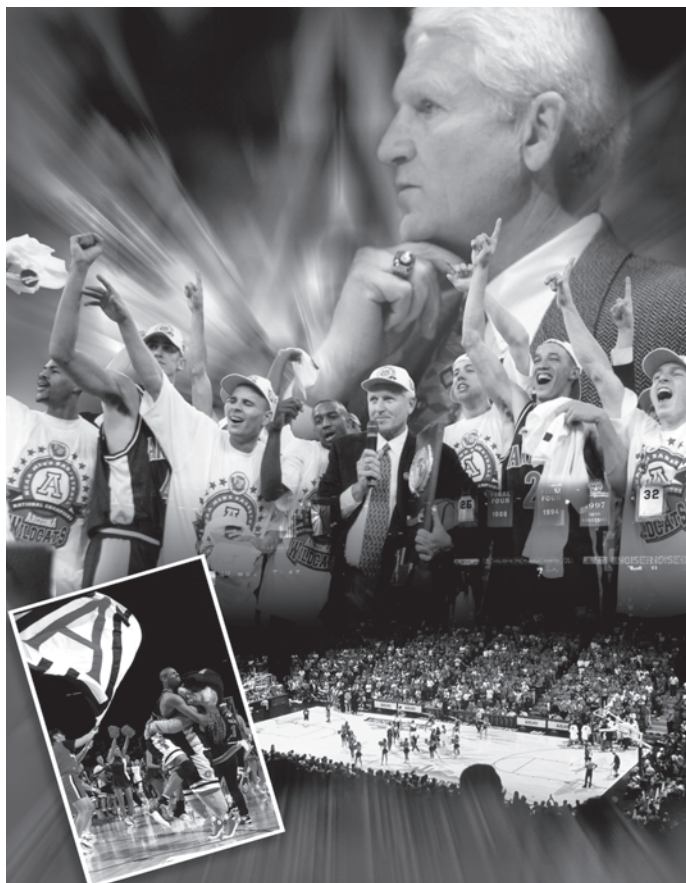


in McKale Center. Those numbers rise higher in the Lute Olson era (1983-2003), as Arizona has posted a 270-33 (.891) mark in the storied facility, including wins in 225 of its last 243 games played. Seven of UA's nine perfect seasons in

McKale Center have come in the last 18 seasons. Since winning the 1997 National Championship, Arizona has won 91 percent of its home games (81-8) and established a new record for average attendance five times in that span.

The seating capacity has fluctuated through the 31 years of the building's existence. McKale opened in 1973 with a capacity of 13,658, but the installation of chair-back seating in 1984 reduced that figure to 13,316. Elimination of all bleacher seating dropped the level to 13,124 in 1986 before additional seats were added in the period from 1988 to 2000 that pushed capacity to its current 14,545. The largest crowd in McKale history was the 15,176 who watched Arizona face New Mexico on Jan. 14, 1976. The largest crowd in the Lute Olson era showed up for the 1997-98 home opener against Morgan State (14,672), the first home





McKale's recent additions have cemented its reputation as one of the finest all-encompassing athletic facilities in the nation and allowed it to attract several major sporting events. McKale Center was the site for the NCAA Wrestling West Regionals in 1974 and 1980, and hosted the NCAA Wrestling Championships in 1976. More recently, McKale was a site for NCAA first and second round basketball action in 1979, 1987, 1989, 1991, 1997 and 2000. In addition, the USA Basketball Team trained in the arena prior to capturing the 1986 World Championships, and Arizona played host to the second Pac-10 Conference Basketball Tournament in 1988.

The facility is 428 feet long, 339 feet wide and 77 feet from the floor to parapet, and houses the entire off-field operations of the University's athletic department, as well as an exercise sciences lab and a suite of 20-plus office labs for the Optical Sciences department. With three levels that consist of equipment rooms, a training and rehabilitation center, locker rooms, storage areas, ticket operations, academic services, computer lab facilities and administrative offices, McKale Center is the primary gathering place for all of UA athletics.

Since its opening in 1973, more than five million fans have attended UA basketball games in McKale Center. In fact, season tickets have been sold out for 17 consecutive seasons, which helps provide one of the finest game-day environments in all of college basketball.

game after Arizona's national championship run.

Since its initial construction at a cost of \$8.1 million in 1973, McKale Center has undergone numerous face lifts to keep up with the times. Sophisticated computerized message boards spanning the upper deck on both sides of the court, along with padded press row and officials' tables with computer-driven scoreboards were added in the early 1990s. The 1992 season saw the installation of four huge video replay screens in each corner of the arena. At the conclusion of the 1997-98 campaign, a state-of-the-art playing surface replaced the old floor that had been in place since 1983. The 2001-02 season brought new changes as well. A new four-sided scoreboard with video replay screens was installed and hung from the center of the arena, ensuring that once again it meets the standard as one of the finest facilities in the country.

The opening of the Eddie Lynch Athletics Pavilion in 2002 paved the way for further enhancement of the building as additional lockerroom space and an expanded academic services department only adds to the complete student-athlete experience.





# McKale Memorial Center

## McKale Center Attendance

### McKale Center's Largest Crowds

1.	15,176	New Mexico	1/14/1976
2.	15,156	Arizona State	3/4/1978
3.	14,672	Morgan State	11/20/1997
4.	14,642	Coppin State	12/13/1997
5.	14,638	UCLA	1/20/1996

### McKale Center's Largest Crowds During the Lute Olson Era (1983-2003)

1.	14,672	Morgan State	11/20/1997
2.	14,642	Coppin State	12/13/1997
3.	14,638	UCLA	1/20/1996
4.	14,610	California	1/30/1999
5.	14,594	USC	3/4/1999

### Yearly Attendance & Record in McKale Center

Year	Games	Record	Total	Avg.
1972-73	\$5	4-1	64,975	12,995
1973-74	15	14-1	184,275	12,285
1974-75	14	13-1	159,096	11,364
1975-76	16	16-0	179,523	11,220
1976-77	16	16-0	199,130	12,446
1977-78	15	12-3	172,428	11,495
1978-79	15	13-2	174,831	11,655
1979-80	16	10-6	181,428	11,339
1980-81	17	10-7	160,651	9,450
1981-82	14	6-8	115,272	8,234
1982-83	14	4-10	87,136	6,224
1983-84	14	7-7	102,163	7,297
1984-85	15	12-3	163,980	*10,932
1985-86	16	16-0	179,008	*11,188
1986-87	15	10-5	190,800	*12,720
1987-88	%19	19-0	252,649	**13,297
1988-89	14	14-0	190,675	**13,620
1989-90	14	14-0	190,949	**13,639

1990-91	17	17-0	235,051	**13,826
1991-92	16	15-1	222,347	**13,884
1992-93	15	14-1	208,185	**13,879
1993-94	15	14-1	209,592	**13,973
1994-95	14	11-3	199,589	**14,257
1995-96	16	13-3	228,064	**14,254
1996-97	14	13-1	199,899	**14,279
1997-98	15	15-0	217,953	**14,530
1998-99	14	14-0	200,885	**14,349
1999-2000	17	16-1	246,237	**14,485
2000-01	15	13-2	217,996	**14,533
2001-02	13	9-4	189,072	**14,544
2002-03	15	14-1	218,427	**14,562
<b>Totals</b>	<b>460</b>	<b>388-72</b>	<b>5,742,266</b>	<b>12,483</b>
		<b>.843</b>		

# Full Capacity

\* Led the Pac-10 Conference in attendance

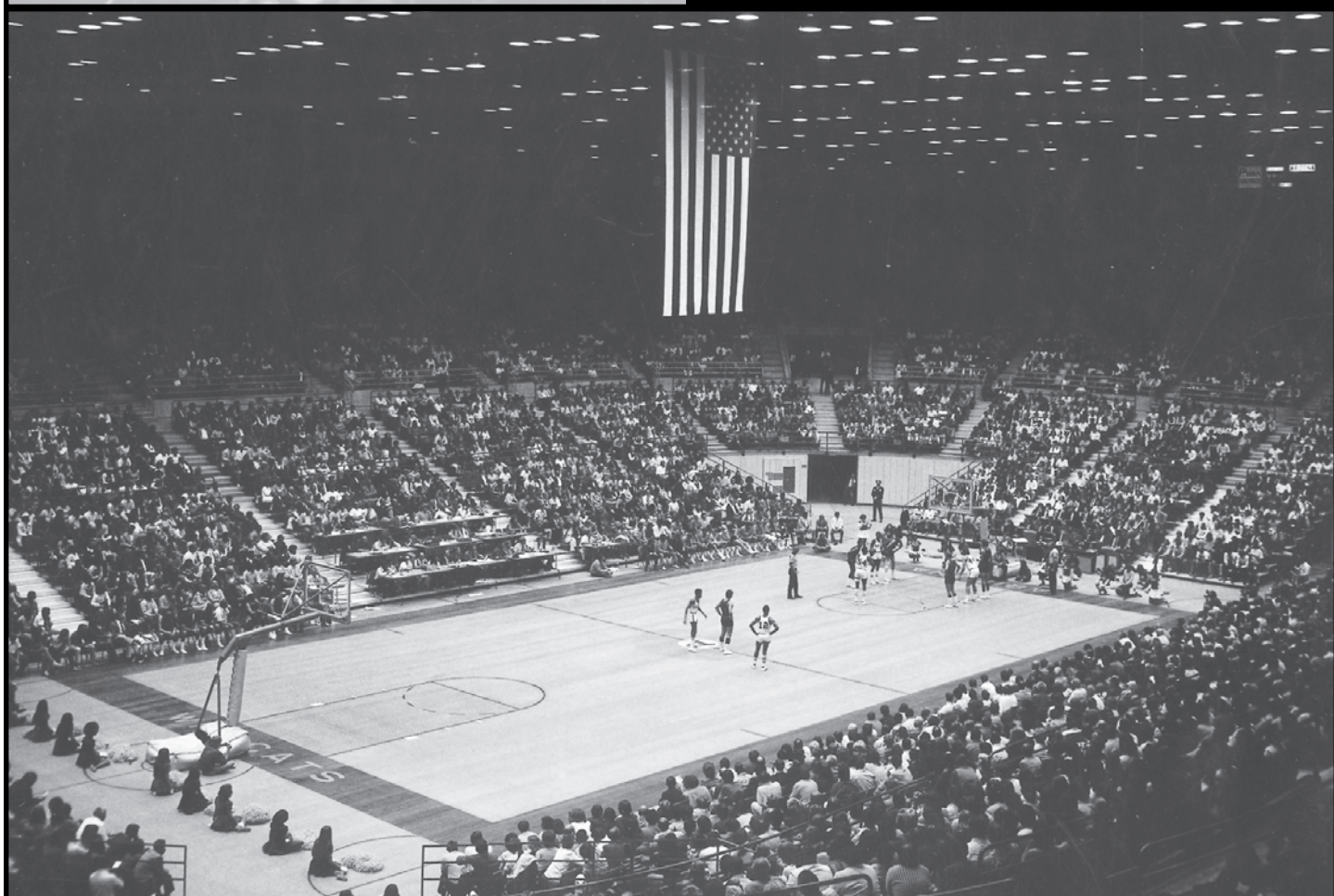
% Figure includes three home games during the Pac-10 Tournament

\$ McKale Center opened Feb. 1, 1973, with five home dates during the 1972-73 season

## Streaks of Note

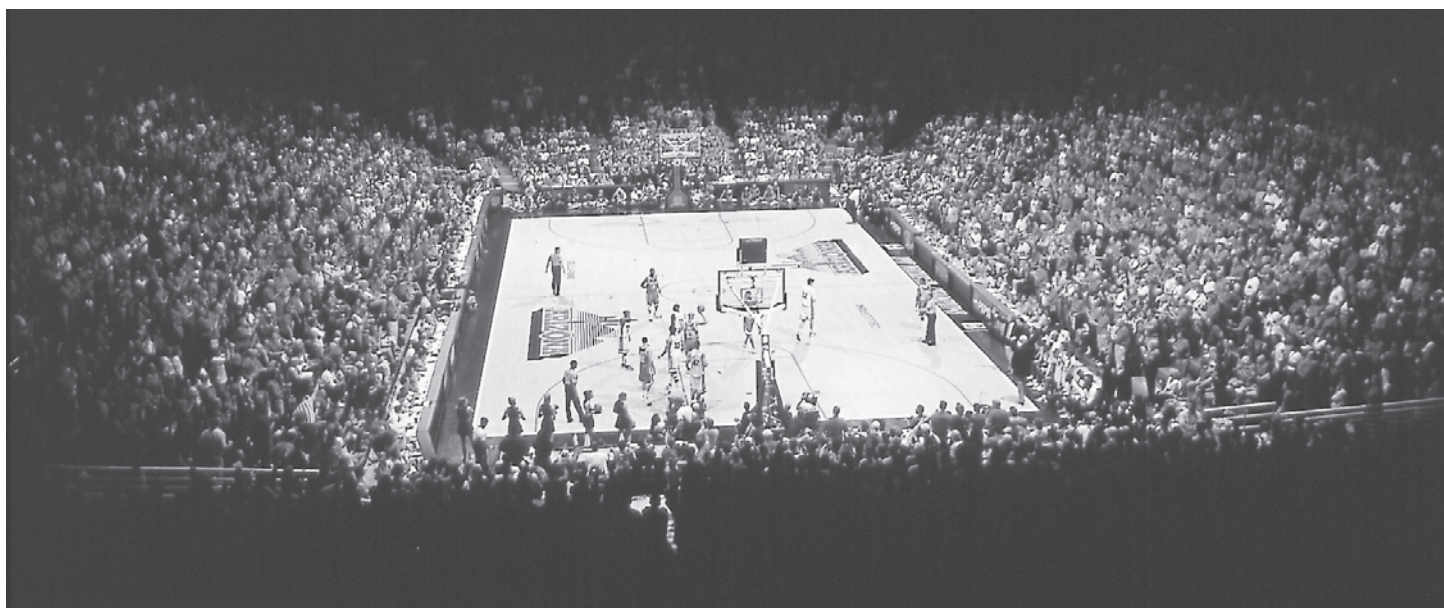
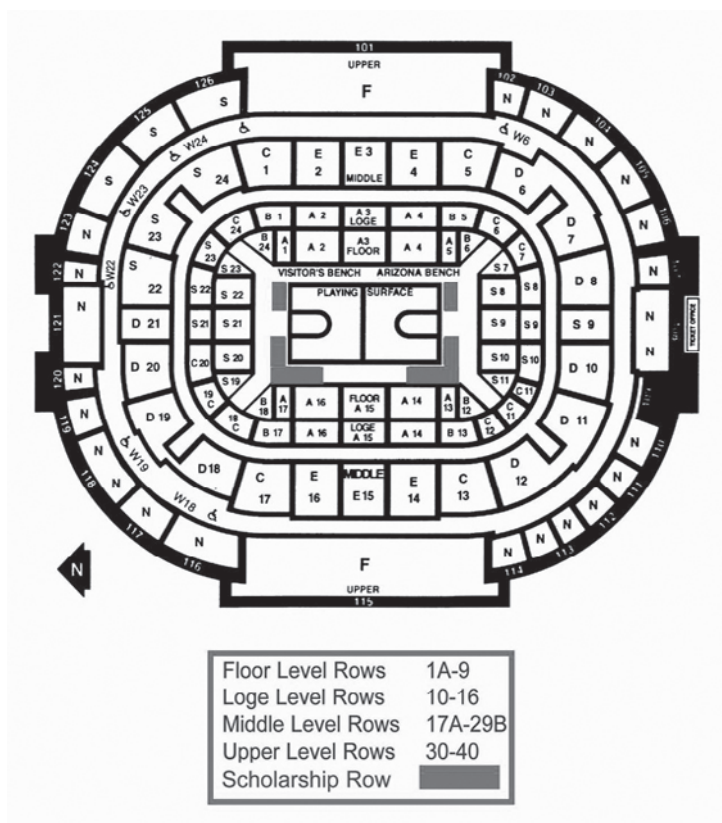
Arizona is the only school to have two home-court winning streaks rank among the top 10 in NCAA Division I history.

UA's 81-game win streak in Bear Down Gym from 1945-51 ranks fifth, while the 71-game win streak in McKale Center from 1987-92 ranks 10th.





# McKale Center Seating





# Bear Down Gymnasium

Long before Arizona basketball teams were playing in front of 15,000 fans in McKale Center, they were entertaining much smaller crowds within the intimate confines of Bear Down Gymnasium. Completed in July of 1926 by the Clinton Campbell Construction Company of Phoenix, the gym played host to UA basketball for nearly fifty years and still stands as a memorial to the humble beginnings of Arizona basketball.

The numbers from the dedication game demonstrate the true humbleness of those beginnings. On January 21, 1927, an estimated crowd of 3,000 climbed into the bleachers to watch Arizona defeat Arizona State, 29-18. It took nearly thirty years before those same teams gave the gym its first 100-point game, a 104-103 ASU victory in 1955. The period between those games saw a number of changes to the building and the team it housed.

The building was originally called University Gym until the Chain Gang, a junior men's honorary, sponsored a fund-raising dance in December of 1927 to paint the school's new unofficial motto, "Bear Down", on the outside of the gym. The saying came from the legendary last words of student body president and football captain John "Button" Salmon following a fatal car accident the year before. Within a month, the words had been painted on the roof and, until a 1983 approval by the Board of Regents, it was unofficially known as Bear Down Gym.

Whether official or not, the spirit of the words on the outside of the building was reflected in the play on the inside. From 1932 to 1953, Arizona captured 11 Border Conference championships in the gym, and from 1943 to 1951 the Cats put together an

81-game home court winning streak that still ranks fifth all-time in NCAA history. That streak included a 62-61 upset of second-ranked Long Island University in front of a record crowd of 4,650 that highlighted a 1951 season in which the Cats had a record of 24-6 and finished with a No. 12 national ranking.

Arizona basketball spent 45 total seasons in Bear Down Gym (games were not played during the war years of 1942-44) with a record of 405-119 for a .773 winning percentage. Arizona teams went undefeated eight times and suffered only two losing seasons in the gym under the guidance of four different coaches. One of those coaches, Fred Enke, earned his 500<sup>th</sup> career win in 1954 with an 86-81 upset win over Kansas State.

Other milestones in Bear Down include a couple of school records that have yet to be matched. A 26-rebound performance by Bill Reeves in 1956 still tops the school charts, and a 46-point outburst by Ernie McCray is the highest single-game scoring total in UA history.

By the time Arizona won its final varsity game in Bear Down Gym, 79-77, over UC Santa Barbara in 1973, the program had outgrown the small gym. Almost overnight, the few thousand fans that crowded into Bear Down grew to three times that much in McKale Center. But the classic old gym still holds its place as the first home of Arizona basketball and is an important piece of University of Arizona history.

## Bear Down Gym Timeline

**Nov. 1925** — \$130,000 contract awarded to Clinton Campbell Construction Co. of Phoenix. Construction completed in July 1926.

**Oct. 30, 1926** — Homecoming dance held in gym. Billed as "largest dance ever held in Arizona on the largest dance floor in Arizona."

**Jan. 7, 1927** — First game, Arizona varsity defeats frosh, 33-20.

**Jan. 21, 1927** — Dedication game. Crowd estimated at 3,000 sees Arizona defeat Arizona State, 29-18. Waldo Dicus leads Wildcats with 10 points.

**Dec. 1927** — Chain Gang, junior men's honorary sponsors fund-raising dance at gymnasium to paint "Bear Down" on roof in honor of John "Button" Salmon's last words to J.F. "Pop" McKale.

**Jan. 1928** — "Bear Down" motto painted on roof. Facility unofficially becomes known as "Bear Down Gym."

**1932** — Arizona wins first Border Conference title.

**Dec. 14, 1945** — Arizona defeats Williams AFB, 50-47, to begin 81-game home-court winning streak.

**Jan. 29, 1951** — Arizona upsets second-ranked Long Island University, 62-61, before record crowd of 4,650. Wildcats are 14-0 at home, 24-6 overall, invited to play in both the NCAA and N.I.T. tournaments, and ranked 12th in final AP poll.

**Dec. 8, 1951** — Arizona's 81-game home court winning streak ends with 76-57 loss to Kansas State.

**1953** — UA wins last of 11 Border Conference titles.

**Feb. 1, 1954** — Hadie Redd, UA's first black basketball player, scores 26 points to lead Wildcats to 87-74 upset of 17th-ranked Bradley.

**Dec. 6, 1954** — Head coach Fred Enke, in this 30th season, records his 500th career victory as Arizona upsets Kansas State, 86-81.

**Feb. 1, 1956** — Bill Reeves sets still-standing UA single-game rebounding record with 26 in 68-53 victory over UC-Santa Barbara.

**Feb. 6, 1960** — Ernie McCray sets still-standing UA single-game scoring record with 46-points in 104-84 victory over Los Angeles State. He makes 16 field goals and 14 free throws, also both school records, and grabs 14 rebounds.

**Jan. 13, 1960** — Arizona records most points scored and biggest victory margin (52) in Bear Down Gym with 118-66 victory over Eastern New Mexico.

**1961** — Arizona plays its final season under Fred A. Enke, who retires after 36 years as head coach with a 510-326 record. Enke's record in games played in Bear Down Gym is 297-85 (.777).

**Jan. 28, 1965** — Arizona upsets eighth-ranked (AP) San Francisco, 71-56. The following week Wildcats earn first national ranking since 1951, No. 14th in UPI poll.

**Jan. 19, 1973** — Last varsity basketball game played in Bear Down Gym, Arizona defeats UC-Santa Barbara, 79-77.

**March 1983** — title "Bear Down" Gym finally made official by Board of Regents.

**Take Note:** Arizona's overall record in 45 seasons in Bear Down Gym was 405-119, a .773 winning percentage. Eight undefeated seasons with best records of 14-0 in 1945-46, '47-48, and '50-51.

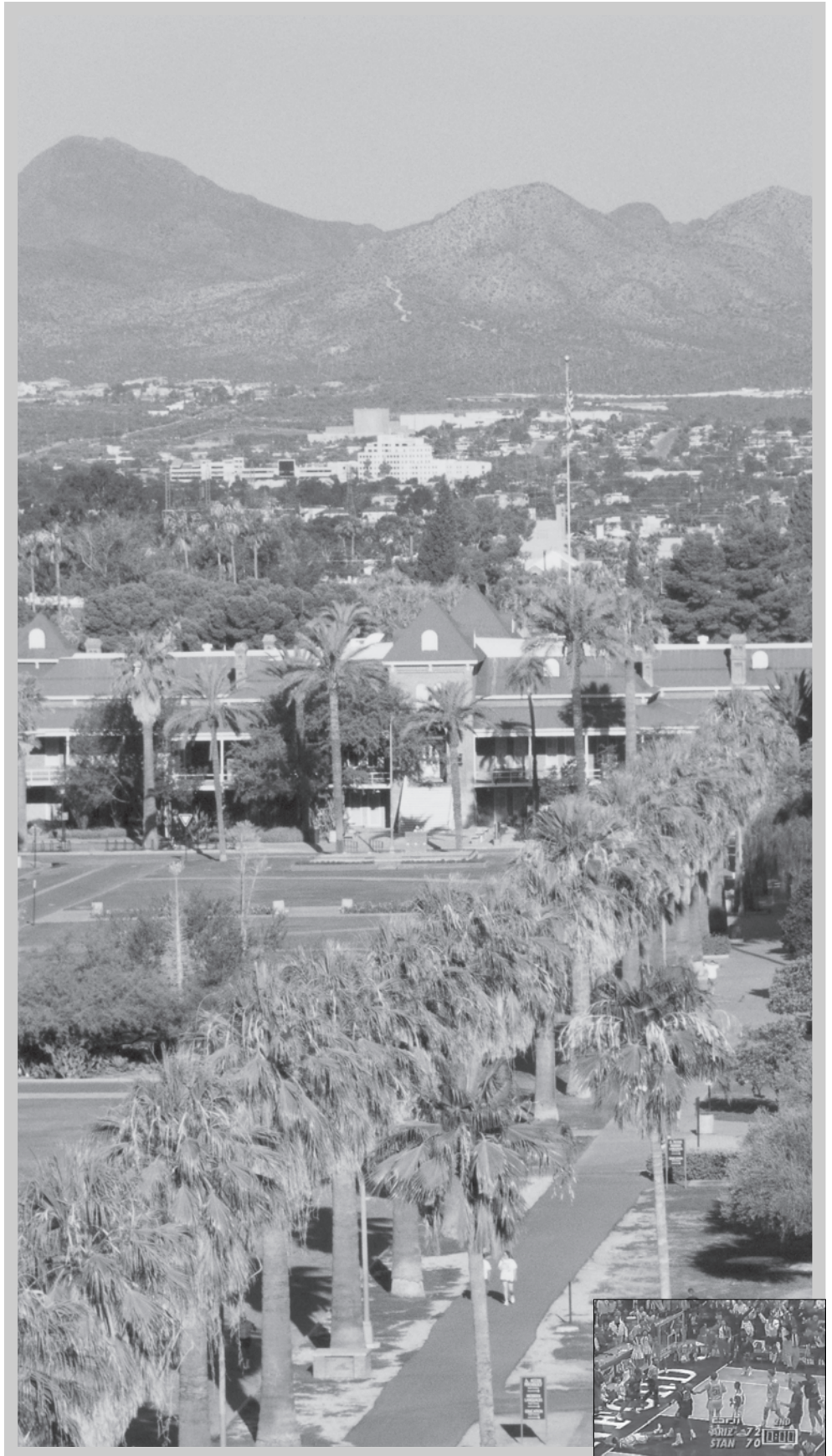




# ***The University of Arizona***



**ARIZONA BASKETBALL™**





# ***The University of Arizona***

Born on 40 acres of land donated by a saloon-keeper and two gamblers, and funded by a \$25,000 consolation prize in Tucson's competition for the Territorial capital, the University of Arizona rose from the dusty floor of the desert in true Wild West fashion. Nobody wanted it, and fewer believed it would last. Fortunately, they were wrong, and the bet laid down by E.B. Gifford, Ben C. Parker and W.S. "Billy" Read on Nov. 27, 1886, has paid off into one of the finest research institutions in the world.

When the first 32 students hitched their cow ponies to posts near the only building on campus in 1891, they began a tradition that has now entered its third century. The hitching posts may be gone, but "Old Main" remains as witness to the University's growth into a 355-acre Research I institution with 185 buildings, more than 35,000 students, and a faculty and staff of 12,000. The UA is the largest employer in Pima County and the fourth-largest in Arizona with a payroll of half a billion dollars.

It's hard to believe that in the early days there were more students in the preparatory department finishing the equivalent of high school than there were University students. The number of University graduates never reached more than 10 per year until a decade of rapid expansion beginning in 1910, which saw the Territory become a state and the small outpost in the Sonoran Desert grow into a true educational institution.

Today, the University of Arizona is one of the top 20 research universities in the nation and has played a part in groundbreaking projects ranging from the exploration of Mars to the development of new cancer treatments. UA's observational, theoretical and space astronomy programs are ranked No. 1 in the country by the National Science Foundation (NSF) and recent U.S. News and World Report rankings placed 17 of the school's graduate programs among the top 20 in the nation. In addition, the Nobel Prize, three Pulitzer Prizes and a National Medal of Science have been bestowed upon Arizona educators.

Not to be forgotten, the University's undergraduate programs continue to flourish. The NSF considers Arizona to be

one of the 10 universities that best integrates teaching and research for undergraduates. The NASA-funded space grant program pays undergraduates to work in laboratories alongside faculty, and the Undergraduate Biology Research Program includes 43 departments, involves 200 faculty sponsors and funds more than 100 undergraduate researchers each summer.

UA's top-notch programs develop top-name graduates who have continued on to success in their respective fields. The UA boasts a laundry list of graduates who have significantly impacted society. From the late U.S. Congressman Morris K. Udall to Joan Ganz Cooney, founder of the Children's Television Workshop, to Emmy Award winning actor/comedian Garry Shandling, UA graduates have made their mark on the world. Other notable ex-Wildcats include Native American artist Fritz Scholder, the late astronaut Richard Scobee, Arizona Supreme Court Justice Stanley G. Feldman and August Busch III, the CEO of Anheuser-Busch, Inc.

The UA also plays host to the world, with students representing all 50 states and 130 countries. Nearly a quarter of the student body consists of under-represented racial and ethnic groups, and the campus is located in one of the most diverse locations in the country, with the influence of Native American and Mexican cultures evident throughout the Tucson community.

The University of Arizona enters its third century of service with a continued commitment to providing support to its undergraduate population. Recently completed and current construction projects are testaments to the fact that the UA is putting its money where its mouth is. The Integrated Learning Center, located underneath the grass Mall in the middle of campus, provides a home base for freshmen, with classrooms and offices for easier access to faculty and staff. In addition, the new Student Union, scheduled for completion this year, will contain the ambience of the Southwest with shaded terraces and open-air walkways, while providing services such as the bookstore and restaurants that serve the UA community. A new SALT (Strategic Alternative Learning Techniques) Center is under construction to enhance aid to students with learning disabilities, and the Eddie Lynch Athletics Pavilion, which includes a strength training center, medical services center, and the Jim Click Hall of Champions - a museum to showcase Arizona Athletics Heritage and Tradition.

This commitment to excellence ensures that the University of Arizona will continue to grow from its auspicious beginnings as a single-building outpost in the desert into a world-renowned center for knowledge and research well into the next century.





# Tucson, Arizona

Located in the heart of southern Arizona, Tucson is a city of stunning contrast and diversity. From the broad desert valley of world-famous saguaro cacti to 9,000-foot mountain forests of pine trees and snow, the city stands at a crossroads geographically and culturally.

A population of more than 750,000 sprawls along a valley floor of some 20 miles between mountain ranges to the east and west and is nestled against the backdrop of the Santa Catalina range to the north. On any day of the 360 days of sunshine per year, the Santa Rita Mountains can be seen some 65 miles to the south between Arizona and Mexico.

When the temperatures rise in the desert, it's just a 40-minute drive to the top of Mt. Lemmon, the southernmost ski resort in the United States. It is possible in the late winter months to spend the morning on one of the numerous golf courses in town before heading up the mountain for some late-afternoon skiing. Outdoor activities are highlighted by Sabino Canyon, which showcases the beauty of the desert with river-guided trails leading into the mountains.

The Sonoran Desert provides a unique setting not to be found anywhere



else in the world. Far from the Saharan sand dunes that most first-time visitors expect, the desert boasts a wide range of wildlife and vegetation. An afternoon drive through the Saguaro National Monument with its world-famous display of saguaro cacti encapsulates the unique beauty of the area. It also leads to the Sonoran Desert Museum, with its rich collection of desert wildlife, and Old Tucson Studios, the filming site for many famous old Westerns. For fans of the real Old West, though, Tombstone is a simple two-hour drive from town.

In addition to its natural attractions, Tucson features a wide range of cultural experiences. From the first Native American inhabitants to the earliest Spanish settlers to the current winter "snowbirds," each group of people has left its mark on Tucson. Native American, Mexican and American Southwest influences are prevalent throughout the city. The Mission of San Xavier del Bac, located on the outskirts of town, is one of the original missions built by the Spanish missionaries, and the artist colonies of Tubac and Bisbee are within a few hours drive.

Continuously settled for more than 12,000 years, Tucson has grown from a small Native American village into one of the "Mega-Trend" cities of the 21st century. It is the premier astronomy and optics center of the world, an important health services center and home to a renowned research institution in the University of Arizona.

Tucson is a thriving metropolis that continues to grow by thousands of residents each month, but it has held fast to its small-town ambience. Locals gather at historic Fourth Avenue for nighttime entertainment and shopping, and the University holds the center of the city's attention with its athletics and cultural activities.

For those in search of a big-city atmosphere, Phoenix is a two-hour drive to the north and is home to NBA, WNBA, NFL, NHL and Major League Baseball franchises. Further to the north lie in-state geographical attractions like the



Grand Canyon and Lakes Powell and Mead, and Las Vegas is only a seven-hour road trip away. There may not be much water in the desert, but when the summer temperatures rise, Tucson is just a half-day's drive from the beaches of the Pacific Ocean and the Gulf of California.

The nights are always cooler in the desert after a splendid sunset or a mid-afternoon dousing from a summer monsoon. That's when Tucson's small-town attitude and big-city potential reveal themselves in the nighttime entertainment. From cultural events at the UA's Centennial Hall or the Temple of Music and Art, to the hot spots on Fourth Avenue and downtown, there is something to engage almost any interest.

The melding of the city's diverse influences makes Tucson a prime choice both as a vacation spot and as a home. With a population that includes college students, retirees and families of all backgrounds, Tucson does have something for everyone.





# ***The University Administration***

## ***The President of the University of Arizona Dr. Peter Likins***



Dr. Peter Likins' leadership in six years has proven to be a tremendous asset for the University of Arizona.

Likins has received praise in the past year for his progressive approach to University restructuring in the face of budget difficulties that have plagued institutions of higher learning nationwide. Too, he's established himself as an avid supporter of UA athletics and a thoughtful spokesman for the kinship between a noted institution

of higher education and its public profile as displayed through top-level intercollegiate athletic competition.

As a former student-athlete recognized by the national Wrestling Hall of Fame in Stillwater, Okla., in its Hall of Outstanding Americans, Likins has a broad understanding of college athletics. UA athletics director Jim Livengood frequently cites Likins' leadership when speaking to all types of audiences.

"Dr. Likins has an understanding of so many aspects of higher education that it's impressive just to speak with him. I think you can say we're extremely confident in his ability to help athletics flourish in all ways," Livengood said.

Likins, the 18th president of The University of Arizona, began his tenure Oct. 1, 1997. Prior to coming to the UA, Likins had served as the 11th president of Lehigh University, in Bethlehem, Pa., since 1982. Before serving at Lehigh, Likins served as provost of Columbia University, where he was a professor and dean of the Columbia School of Engineering and Applied Science.

Prior to his six years at Columbia, Likins was a member of the faculty at UCLA, where he advanced through the ranks and was honored several times for distinguished teaching during his 12-year tenure.

Likins began his professional career as a development engineer at the Jet Propulsion Laboratory of the California Institute of Technology, where he was involved in the very early years of spacecraft development. In 1983, he was selected a Fellow of the American Institute of Aeronautics and Astronautics, and in the following year, he was elected to membership in the National Academy of Engineering.

He is author of numerous articles and an engineering mechanics textbook, and co-author of several advanced texts related to spacecraft and electro mechanical systems. Likins also has served as consultant to most major U.S. aerospace companies, as well as to government agencies here and abroad.

Likins is a member of the executive committee of the Council on Competitiveness and a member of the Business-Higher Education Forum, both in Washington, D.C. He also has chaired the Pennsylvania Board for Communities in Schools and served on a number of other national and international advisory boards, including the White House Advisory Committee on the Health of Universities and the President's Council of Advisors on Science and Technology.

As Lehigh's president, he served on the boards of COMSAT Corp. of Washington, D.C., Consolidated Edison Co. of New York City, Dynacs Engineering Co. of Clearwater, Fla., and Parker-Hannifin Inc. of Cleveland, among others.

Likins earned a bachelor's degree in civil engineering at Stanford, a master's degree in the same subject at the Massachusetts Institute of Technology and a doctoral degree in engineering mechanics at Stanford. At Stanford, he was a Baker Scholar and Ford Foundation Fellow, and, at MIT, he was a Tau Beta Pi Fellow. He holds honorary degrees from the Czech Technical University of Prague, Lafayette College, Lehigh University, Moravian College and the Medical College of Pennsylvania.

Likins and his wife, Patricia, together have raised a multi-racial family including six adopted children.

### ***Peter Likins'***

#### **Educational Credentials**

Bachelor's degree, civil engineering, Stanford 1957

Master's degree, civil engineering, MIT 1958

Doctoral degree, engineering mechanics, Stanford 1965

Provost, Columbia University

Dean, engineering, Columbia University

Developmental engineer, Jet Propulsion Laboratory

Engineering mechanics faculty, UCLA

National Academy of Engineering

American Institute of Aeronautics and Astronautics

Business-Higher Education Forum



# The University Administration



## *Jim Livengood, Director of Athletics*

The University of Arizona's athletic department continues to thrive in capable hands as the program pursues success in its 106<sup>th</sup> year in 2003—04.

Jim Livengood became UA's eighth athletics director in January 1994. Behind his strong leadership, remarkable developments have occurred throughout the program in the past nine years, both from a competitive and administrative

standpoint. The successful "Campaign Arizona for the Student-Athlete" made possible ICA's considerable facility improvements, highlighted by the fall 2002 dedication of the Eddie Lynch Athletics Pavilion with its strength and conditioning and medical services centers. 2002-2003 also marked the addition of individual women's team locker rooms, a new academics complex and student-athlete computer lab. During Livengood's tenure, UA maintained its top-10 competitive record with overall national rankings by the Sears Directors' Cup of sixth in 1993-94; fourth in 1994-95; seventh in 1995-96; sixth in 1996-97; sixth in 1997-98; ninth in 1998-99; eighth in 1999-2000; fifth in 2000-2001; ninth in 2001-2002 and 16th in 2002-2003. This record reflects success throughout Arizona's broad-based program, highlighted by participation in the 1994 and 2001 NCAA Division I Men's Basketball Final Four, and becoming 1997 NCAA Men's National Basketball Champions. Arizona also won the 1994, 1996 and 1997 and 2001 NCAA Division I National Softball Championships along with the 1996 and 2000 NCAA women's golf titles.

Livengood is uniquely prepared. Since coming to Arizona he has earned the respect of staff, community, and peers alike and has become well known for his hands-on, personable approach and his involvement with the community.

He is active on the national and regional level. Livengood chaired the NCAA Division I Men's Basketball Committee during the 2002-03 season after serving on the committee since 1999. He is a member of the NCAA Fellows (Pilot) Program to mentor new athletic directors, and served on the NCAA Peer Review team from 1994-99. This year, Livengood chairs the Pac-10 Athletic Directors Revenue Sharing Committee, and serves as a member of the Pac-10 Bowl Committee, Pac-10 Men's Basketball Tournament Subcommittee, and as Pac-10 AD's Liaison to Men's Basketball Coaches. In 2002-2003, he was Pac-10 Vice-President, a member of the Rose Bowl Management Committee in addition to serving on the Pac-10 Revenue Sharing Subcommittee, the Men's Basketball Tournament Subcommittee, and as Pac-10 AD's Liaison to Men's Basketball Coaches.

He is among national leaders in gender equity issues, continuing these efforts through his service to the Pac-10 Gender Equity Committee (1997-98) as well as his continued diligent work to keep the Arizona Athletics program in a leadership role in gender issues.

On the national scene, Livengood is a member of the Executive Committee of the National Association of Collegiate Directors of Athletics (NACDA) after serving as NACDA President in 1998-99, and continues to serve as a member of NACDA's Finance-Management Committee and its Strategic and Long Range Planning Committee. He

was president of the Division I-A Athletics Directors Association in 1998 and remains actively involved with that association's Executive Committee. Livengood was recognized in the spring of 1999 as the NACDA Division IA Athletic Director of the Year.

No stranger to the Pacific-10 Conference, Livengood spent six years as athletics director at Washington State where he developed a competitive program and earned high marks for his ability to maintain fiscal management, directing what is still widely regarded as a model gender equity program and developing a powerful hands-on approach to community affairs and fund-raising. During his tenure at WSU, Livengood served on the NCAA's Women's Committee and Gender Equity Task Force, and the Executive Committee of NACDA.

In Tucson, Livengood has immersed himself in local community and civic activities. In addition to headlining the Jim and Linda Livengood Toys for Tots Golf Tournament, and involvement with the Tucson Boys' Chorus and the Humane Society, he serves on the Big Brothers', Big Sisters' Advisory Board and on the board of directors of Southern Arizona Community Bank. He is a member of the Tucson Rotary Club, the Tucson Chamber of Commerce and the VIP Breakfast Club. Livengood's local activities only add to an impressive list of community service and civic responsibilities in Washington and Southern Illinois. He previously served as a member of the Washington Special Olympics, the Pullman Chamber of Commerce, the Pullman Cub Scouts, the Pullman Rotary Club, the Greater Spokane Sports Association, Illinois Special

Olympics, Illinois United Way, Carbondale Parks and Recreation, the Southern Illinois Coalition for Economic Development and the Carbondale Chamber of Commerce and numerous other civic responsibilities.

Born in Quincy, Wash., Livengood earned honorable mention all-state honors in basketball at Quincy High School. He attended Washington State, Everett (Wash.) Community College and Brigham Young University, earning a bachelor's degree in physical education from BYU in 1968. He completed his fifth-year education requirement for teaching certification at Central Washington in 1972.

Livengood taught and was assistant football coach and track coach at Moses Lake High School in Washington in 1968-69, was head football and basketball coach and a teacher at Oroville High in 1969-72 and was athletics director, head football and basketball coach and counselor at Ephrata High in Washington in 1972-80.

Washington State hired Livengood as its Cage Camp director in 1980-81 and promoted him to assistant athletics director in charge of Cage Camp and high school relations in 1981-82. He was associate athletics director responsible for development and public relations in 1982-85. Livengood became director of athletics at Southern Illinois University in 1985-87, where he oversaw a 20-sport Saluki program in the Missouri Valley Conference and the Gateway Conference. He served as President of the Gateway Conference in 1986-87. Washington State rehired him as athletics director on September 1, 1987.

Livengood and his wife, Linda, have two grown children. Both graduated from the University of Arizona. Michelle graduated from the College of Law in May 2000, and Jeremy graduated in December 1999.





# The University Administration



## **Kathleen "Rocky" LaRose** Senior Associate Athletics Director

Kathleen "Rocky" LaRose begins her 25th year at the University of Arizona, her 10th year as Senior Associate Director of Athletics and her 15th year as the Senior Woman Administrator. Currently, she oversees the operations of all 19 sports at the UA, being the first woman in her capacity to have day-to-day operational responsibilities over Division I-A football and men's basketball programs.

As the Senior Associate Athletics Director, LaRose also oversees the compliance unit, heritage and the Hall of Champions, public relations and special events, media relations and C.A.T.S. student-athlete services. She also chairs the department's Equity and Title IX committees; and she directs the NCAA certification process.

LaRose joined the Arizona staff in 1979 as the UA softball coach and worked from 1980 until 1989 in various capacities including coordinator of athletic special events and special projects, and as assistant athletics director for fund development. LaRose is a past Vice President of the Pac-10 Conference and is a current member of the Pac-10 Council, which governs and regulates all Pac-10 policies. On the national level, she was a member of the NCAA Management Council (the legislative body of the NCAA) as the Pac-10 representative for four years and was appointed Management Council liaison to the NCAA Student-Athlete Advisory Board. She also has chaired various Pac-10 committees.

In 1990, LaRose developed the Commitment for Athletes' Total Success (C.A.T.S.), an educational approach used by student-athlete services to better the student-athlete academically, athletically, and personally.

Raised in Phoenix, Ariz., LaRose received both her Bachelor of Science and Master's degrees from The University of Arizona. While in attendance, she competed on the UA softball team as a starting infielder and clean-up hitter, leading the Cats to their first-ever conference championship title in 1979. She competed in the 1979 World Cup Softball championship as a member of the USA National Championship team. She also was a member of the Arete Society (UA's Athletics Honorary) and was the 1978 UA Homecoming Queen. She is married to Michael Proctor, the University's Director of Corporate Relations.



## **John Perrin** Senior Associate Athletics Director

John Perrin is the Athletics Department's senior financial officer. He was promoted in August 1991 from assistant to associate status and is in charge of departmental financial affairs, a post he assumed in 1980. His duties expanded in 1993 to include additional responsibility for other department-wide supervision. He came to UA from NBC-TV in Burbank, Calif., where he was business manager. During his tenure at NBC, he was responsible for West Coast production facilities' budgets and finances from 1972-79. As financial officer, Perrin helped nurture the UA Athletics' budget

from \$6 million to its current total of some \$30 million. Perrin and his wife, Jeannie, have two sons, John Jr. and Michael. He earned his bachelor's degree in accounting from New Mexico State University. Perrin is a native of Roswell, N.M.



## **Gayle Hopkins**

Associate to the Athletics Director, Alumni Services

Gayle Hopkins reports directly to Athletics Director Jim Livengood and spearheads the effort to secure support from former athletes as well as other special efforts to incorporate alumni in current departmental activities. He also directs projects to influence former athletes to return to complete their degree. Hopkins' background covers the last three decades of Arizona Athletics. He initially joined the UA staff in 1983 — coming from Claremont College where he was track coach and director of physical education — to help develop Arizona's academic services office. He assumed development duties in 1992. A native of Davenport, Iowa, Hopkins was one of the greatest athletes in Iowa prep history and is a member of the Quad Cities Sports and the Drake Relays Halls of Fame. He also was elected to his High Schools' Wall of Honor. He was a standout athlete in track at Arizona and was the Wildcats' first NCAA champion (long jump, 1964). He represented the United States in the 1964 Tokyo Olympics as a long jumper. He is a charter member of the Arizona Sports Hall of Fame and a former member of the NCAA Track and Field Committee. He is active in many community activities including the Urban League Caucus, and is on the Board of Directors for the Arizona Children's Association and the Carondelet Health Network Public Policy Council. He also is the President of the University of Arizona Black Alumni Association. Hopkins taught school in Tucson and California and was an instructor at San Francisco State and Claremont. He was an EEO specialist for the U.S. Dept. of Agriculture in 1979-80. He holds a bachelor's degree from Arizona, a master's degree from San Francisco State and a doctorate from Claremont. He is married to Patricia Hopkins, and they have a daughter, Alissa, a 1992 UA graduate, and a son, Chris, who played running back at Arizona State from 1992-95.



## **Chris Del Conte**

Associate Athletics Director,  
External Operations and Development

Chris Del Conte joined the Arizona Athletics Department in December 1999. His original responsibilities included overseeing all aspects of Athletic Fund Development including the Wildcat Club, Sport Interest Groups, endowments, annual giving and Campaign Arizona for the Student-Athlete. In this position he and his staff raised funds to support the completion of the Eddie Lynch Athletics Pavilion, and they continue to raise scholarship dollars for Arizona's 450 student-athletes. In addition to his original responsibilities, Del Conte now oversees the McKale Ticket Office, Marketing and Corporate Sales and Trademarks and Licensing — a move that will ultimately consolidate and maximize the potential for all Department Fund Development.

Before coming to Arizona, Del Conte was the Assistant Athletics Director for External Operations at Washington State in Pullman, Wash., and was in charge of capital campaign funds, major gifts, and annual giving.

Del Conte has a bachelor's degree in sociology from the University of California, Santa Barbara, and a master's degree in education administration from Washington State University. He is married to Dr. Robin Ward, and they have two daughters, Sienna and Sophia.



# C.A.T.S. Program

## Introduction

The University of Arizona Department of Intercollegiate Athletics is committed to the academic, physical and personal development of each and every Wildcat student-athlete. To assist in that endeavor, the Department of Intercollegiate Athletics (ICA) has developed a philosophical approach called C.A.T.S. (Commitment to an Athlete's Total Success). C.A.T.S. consists of four programs: Academics, Life Skills, Strength and Conditioning and Medical Services. These programs provide a philosophical framework for ICA and staff to use in the task of assisting in the personal, physical and emotional growth and in the educational development of the student-athlete.

## C.A.T.S. Academics

### Mission

The C.A.T.S. Academic Office strives for excellence in regard to the academic, athletic, and personal performance of its student-athletes. Toward these goals, C.A.T.S. Academics commits itself to exemplary leadership and necessary services to support, manage, and lead its student-athletes.

We realize the unique commitments and pressures placed on the student-athletes. These very differences provide opportunities upon which the office may build a strong academic, athletic, and personal foundation for its student-athletes within and beyond the University.

### Academic Advising

The academic advisor designated by each College has primary advising responsibilities for student-athletes who are currently enrolled in that College's curriculum. The C.A.T.S. Academics Office also offers supplemental counseling to all student-athletes regarding course selection for degree requirements and NCAA requirements for continued eligibility.

The academic advisory staff are responsible for monitoring the student-athlete's progress towards a degree and preserving academic integrity in the advising process. Counseling student-athletes in course selections is one of the most important functions. Our approach is one that encourages the cooperating efforts of several individuals.

A staff member first works with the student-athlete to formulate a tentative course plan for the targeted term. This plan is based on the student's academic background, career objectives, and areas of interest. Then the student meets with a faculty advisor or college advising center staff member to review the plan.

The Athletic Department counselors and campus advisors work together in order to insure progress toward a degree as well as meet eligibility requirements.

### Tutorial Program

Tutorial services are available to all student-athletes upon request. These sessions may be conducted in-groups or individually. Graduate students and outstanding undergraduate students are recruited from all departments and are selected on the basis of faculty recommendation and knowledge of subject area.

Although special arrangements are sometimes made, tutoring is usually conducted at the C.A.T.S. Academics Center, McKale Room 126. This policy encourages student-athletes to attend and, thus, contributes to the positive atmosphere of the program.

### F.A.S.T. Program

#### *(Freshman Academic Scholastic Training)*

The primary focus of the student-athlete should be academic success. It is especially important that the freshman student-athlete understands this very early in their college career.

With this in mind, the F.A.S.T. Program is designed to enhance the academic skills of the freshmen student-athlete to increase their chances of success in the classroom. Attendance in the F.A.S.T. Program is recommended for all teams and required by some. The F.A.S.T. program structure includes a daily 45 minute meeting when student-athletes schedule their time and review their notes.

Topics emphasized during the F.A.S.T. Program include: time management and organizational skills, note taking and test taking strategies, paper structure, content and writing, and final exam preparation.

Additional academic skills training is offered throughout the year.

The program is unique because the information presented is focused on developing the student-athlete as a "whole" person. The ultimate goal is to develop the student-athlete academically, athletically, and socially.

### S.T.A.R.T. F.A.S.T. Program *(Student-Athlete Resource Training Freshmen Athletic Scholastic Training)*

The START FAST Program, required by all freshman student-athletes consists of six (6) hours of directed study time per week in the first semester of enrollment. Each study session focuses on completing academic objectives and is designed to supplement other academic programs.

### Computer Lab

The C.A.T.S. computer lab encompasses twenty-three (23) stand alone computers featuring Microsoft office and Windows word-processing programs, and several spreadsheet programs.

Each computer has full Internet access, the UA library Sabio system, and E-Mail. Student-athletes can access the Discover Career Exploration program from each computer. The Computer facility is open and supervised seventy (70) hours per week and the lab is maintained by a full-time employee. One laser printer and a scanner complement the lab.



# C.A.T.S. Life Skills

In C.A.T.S. Personal Development, the main focus is on personal development, leadership, career development and community service. More than 50 members of the faculty and various campus departments are actively involved in a network supporting C.A.T.S.

## Enrichment and Orientation Programs

Student-athletes explore campus life through an orientation program that consists of a three-day introductory session covering University and Athletics Department programs and policies. It is conducted at the beginning of the fall semester.

## Substance Abuse Education & Testing

The Athletics department is committed to being drug-free. Educational programs consisting of a mandatory workshop, follow-up meetings, seminars, and a Substance Abuse Testing Program help in understanding -- and avoiding -- any type of substance abuse.

## C.A.T.S. Network for Student-Athletes

The purpose of the C.A.T.S. Network is to provide free, confidential and professional assistance to those student-athletes who wish to obtain information or advice in the areas of health, personal growth and well-being and/or explore specific personal concerns.

## Personal Assistance Program

This program identifies student-athletes who are considered "at-risk," through an enrichment program which includes special assessment tests. Once recognized, the student-athlete is given assistance through individual sessions with Athletics Department staff members and/or through various campus assistance programs.

## Minority Outreach Program

In affiliation with various programs on campus, the minority mentoring program places minority student-athletes in touch with faculty and staff who are there to address the personal or academic concerns of student-athletes.

## Peak Performance Program

Peak Performance is designed to help student-athletes learn and use mental skills such as goal setting, visualization, positive self talk, stress management, communication and team building to enhance their effectiveness as a student-athlete and a person.

## Peer Athletic Leaders (P.A.L. Program)

P.A.L. is made up of upper-class student-athletes from each team who are dedicated to helping other student-athletes with any questions or difficulties. Every incoming student is paired with a Peer Athletic Leader to help them ease their transition into the University.

## Career Development Program

The Career Development Program is designed to offer a variety of services to help student-athletes develop and implement career plans, develop resumes, set goals, and help facilitate use of the campus Career and Placement Service.

## L.I.F.E. Program (Links to Internships and Future Employment)

Student-athletes are placed in internships or have the opportunity to interview for full-time or part-time jobs according to their majors and career interests.

## Faculty Fellow Program

The Faculty Fellow allows for a personal relationship between a student and a faculty member to develop and it provides an opportunity to share intellectual, social and cultural experiences.

## Seminar Series

The Seminar Series provides interesting and knowledgeable professionals to speak to student-athletes on a variety of health-related and student success issues. Voluntary and mandatory semi-

nars are regularly scheduled for individual student-athletes, specific teams, or all student-athletes.

## Student-Athlete Advisory Board (SAAB)

SAAB represents the voice of the student-athlete. Members of the board discuss their ideas and concerns with members of the Athletics Department administration. Student-athlete representatives from each of the UA's 19 sports are selected. The Director of Athletics and the Senior Associate Athletics Director (Senior Woman Administrator) hold non-voting membership on the board. The board meets monthly.

## Student-Athlete Giving-Back Program

The Giving-Back Program is designed to educate student-athletes about the importance of giving back during and after athletic eligibility has ended. It also provides venues to learn the heritage and rich traditions of Arizona Athletics.

## Community Outreach Program

Community service, which includes the Smith Project Speakers' Bureau, continues to be one of the most successful segments of the overall personal development program. During an average year, more than 200 student-athletes volunteer in excess of 400 hours to community service and speak to more than 40,000 children in the Tucson area.

## Smith Project Speakers' Bureau

The student-athletes who speak for the Smith Project focus on teaching children how to make healthy life choices and the importance of education. They speak to children about their life experiences, impart an inspirational and positive message, and aim to make a difference in the lives of young people.



# C.A.T.S. Strength Training

C.A.T.S. Strength and Conditioning offers the student-athlete diverse programming designed to maximize the physical capabilities of each individual student-athlete. Each student-athlete receives direction appropriate to his or her specific sport and is able to benefit physically and mentally from strength and conditioning efforts.



## Bill Estes Jr. Family Strength and Conditioning Center

The new \$13.5 million dollar Bill Estes Jr. Family Strength and Conditioning Center at The University of Arizona is a functional facility with thousands of dollars of strength, plyometric (indoor sandpit), indoor running turf and aerobic equipment. An individualized program is developed for each student-athlete depending on his or her sport, position and specific physical needs. In today's athletic arena, it takes more than just talent to succeed. Physical training that includes speed development, flexibility work, strength training, injury prevention exercises and nutritional counseling will give a University of Arizona student-athlete the greatest chance to be successful in their competitive endeavor. The University of Arizona is committed to helping every student-athlete reach his or her potential.



## Free Weight Equipment

Free weight training provides a student-athlete with functional power and strength development to enhance their performance. World-class and state-of-the-art equipment is available to help maximize athletic performance safely and effectively. Plyometric and Flexibility Equipment

Transitioning strength development into reactive power and foot speed is vital for every student-athlete. Specific equipment such as an indoor sandpit, running turf, jumping machines, plyo boxes, medicine balls and the knowledge of when and how to use them from the strength staff will allow a student-athlete to reach the highest level of competition.

## Machines and Dumbbells

Injury prevention and rehabilitation is another aspect that affects a student-athlete's success. A line of top quality selectorized machines and dumbbells, coupled with a staff knowledgeable in functional rehabilitation, will ensure that balanced development, joint isolation and stability can be achieved with the utmost in safety and comfort.

## Cardiovascular Equipment

In addition to having some of the best weather in the country for conditioning outside on a year-round basis, the strength and conditioning center has top of the line heart rate monitored equipment for individual student-athletes to use.



# **C.A.T.S. Medical Services**

C.A.T.S. Medical Services addresses the medical needs of the student-athlete and is able to provide valuable assistance for the student-athlete. The Medical Services area focuses on preventative measures in order to allow the student-athlete to enjoy the rewards of his or her sport to the fullest extent. Rehabilitation and physical therapy services assist the student-athlete in recovery and preparation for continued success in a specific sport.

## **C.A.T.S. Medical Services Staff**

The athletic medicine team is comprised of a team physician (family practice specialist), three team orthopedic surgeons, 12 certified athletics trainers and two physical therapists. In addition, the entire staff works with a team of approximately 30 specialists in the Tucson community to provide comprehensive medical care for athletically related injuries and illnesses.

## **The Kasser Family Sports Medicine Center**

The sports medicine center consists of 5,300 usable square feet in space. It includes the Alex and Elisabeth Kasser Aqua Rehab Facility which features an underwater treadmill and other hydro-therapy equipment. The facility has stations for taping and treatment, examination rooms and offices for UA physicians, staff offices and reception area, and an X-ray examination room.

## **Injury Prevention**

The athletic medicine staff is committed to working with strength and conditioning coaches, team coaches and student-athletes in implementing ways to prevent injuries. Although the risk of injury cannot be completely eliminated, proper strength and conditioning, adequate hydration, taping and bracing, and education are all methods employed by the staff to minimize the risk of injury or illness.

## **Injury Evaluation and Treatment**

If a student-athlete is injured during an athletic event, he or she must notify the athletic trainer of his or her sport as soon as possible. The certified athletic trainer will assess the injury and proceed to treat the injury or recommend further consultation from a team physician.

## **Injury Rehabilitation**

The athletic training staff and physical therapist are trained in up-to-date methods of rehabilitating athletic injuries. The staff utilizes equipment located in the rehabilitation area of the training room such as balance boards, Swiss balls, lifecycles and a treadmills. Later stages of rehabilitation may be conducted in the weight room with help from the strength and conditioning staff.

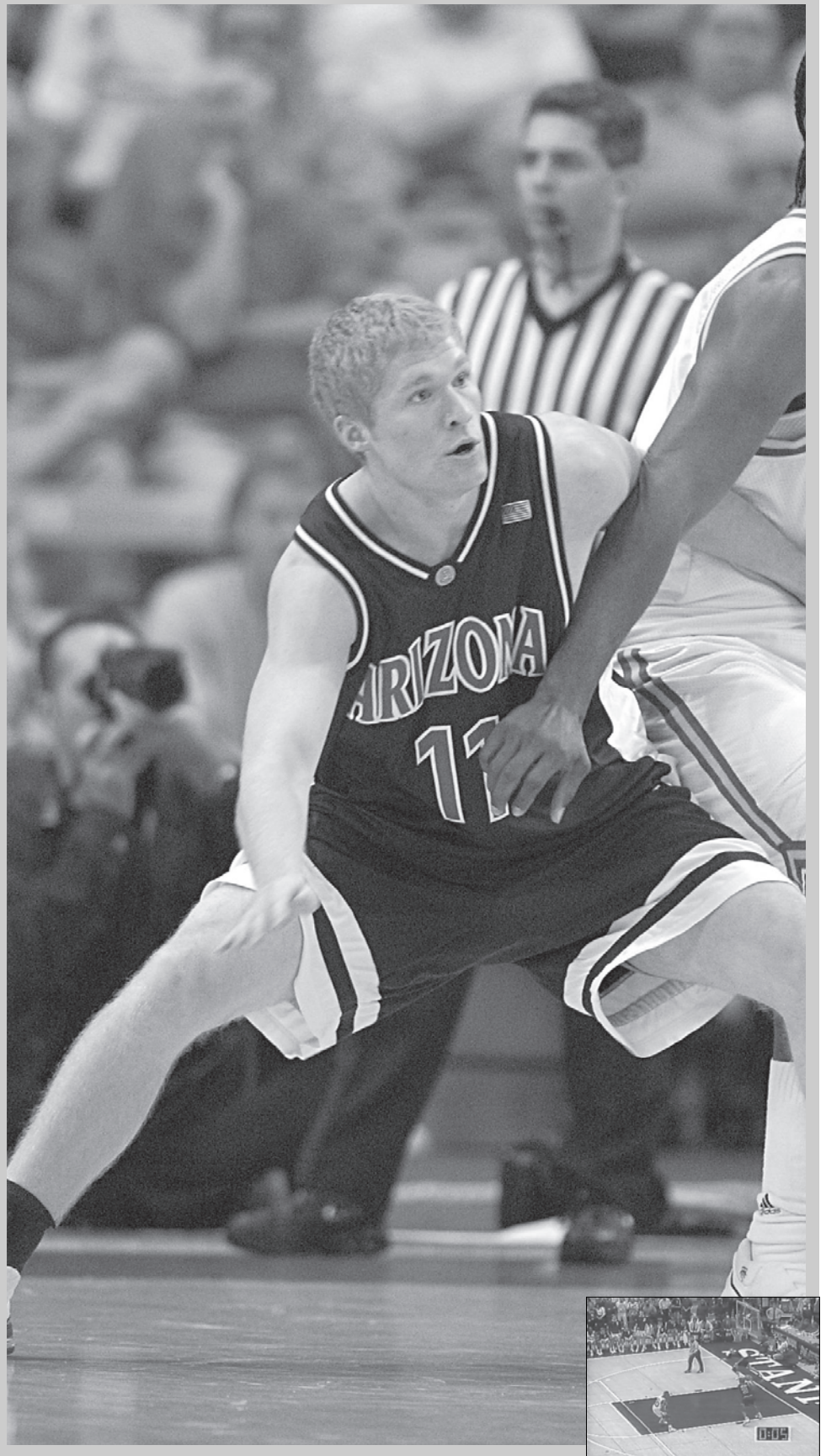




# Media Relations



**ARIZONA BASKETBALL™**



# Media Information

## Arizona Media Relations

The UA Media Relations Office is supervised by sports information director Tom Duddleston, Jr. He is assisted by associate SID Richard Paige, and assistant SIDs Mindy Claggett and Matt Rector. For men's basketball information, please direct your requests to basketball contact Richard Paige.

## Lute Olson Interview Procedures

Arizona head coach Lute Olson is available for interviews by pre-scheduled appointment through the UA media relations office. Olson's weekly press conference will be held in McKale Center on Monday or Tuesday afternoons in either the media relations work room (room 106) or Ashley Lohse room (room 329). Check with the UA media relations office for start times and sites.

Another way to get in touch with Olson is through the weekly Pac-10 head coaches teleconference. Media members are advised to call the Arizona or Pac-10 Media Relations Offices in advance to get the accurate time and date for each week's call.

## UA Player Interview Procedures

Arizona players will be available to the media following Olson's weekly press conference and as scheduled through the media relations office. Players are not to be contacted at home and home phone numbers will not be given to the media. For interviews with assistant coaches, call the men's basketball office directly. Please respect the student-athlete's academic responsibilities when requesting longer interviews. Requests for coach and player interviews should be made at least 24 hours in advance. Players are off limits on game days (except postgame) and on days in between games on the road.

## Press Releases

The UA media relations office will produce a weekly basketball press release that will generally be available by mid-day on Mondays and mid-days on the day after a game during the week. This will be available via the UA athletics' website ([www.arizonaathletics.com](http://www.arizonaathletics.com)), at the weekly Lute Olson press conference, or at the media relations office. Please contact Richard Paige to receive releases via e-mail.

## Credentials

Seating at press row, access to the press room, the interview room, photo areas and lockerooms is restricted to accredited media only. Credentials are issued by game to members of the professional working media only, and should be requested at least 48 hours in advance on company letterhead. Credentials and media parking passes shall be granted on a space available basis to daily newspapers, television and radio stations on assignment and other coverage approved by the UA's media relations director. Due to limited space on press row, not all requests will be approved. Credentials will not be issued to station general managers.

## Media Parking and Entrance

For the 2003-04 season, media parking will be located on the McKale Lawn (adjacent to McKale Center). All credentialed media should enter the

arena through the northeast corner of the arena, through the doors off Martin Avenue next to the Hillenbrand Aquatic Center.

## Media Will Call

All credentials will be available for pickup at the media relations office until three hours prior to game time, then will be available at the media entrance (northeast corner of McKale Center). Please have proper forms of identification when picking up press credentials. Except for special cases, credentials will not be mailed.

## Game Day Media Services

Game notes, media guides and rosters will be available in media work room, which is located just off the hallway under the seats in the north end of the arena (McKale Center Room 109). Halftime statistics will be distributed along press row and in the media work room. Final statistics will be delivered to the interview room and the work room. Full statistics, play-by-play sheets, postgame notes and quotes will be distributed in the work room as well. Four phone lines will be available on a shared basis in the work rooms for media use. The media relations office will fax a final box at your request.

Radio/TV statisticians, spotters, runners, etc. are available through the UA media relations office. Arrangements can be made by contacting Richard Paige. We request that prior arrangements are made to use the statisticians, they must be paid whether they were employed or not.

## Postgame Procedures

Arizona's lockerroom is open to accredited media only following a 10-minute cooling off period after each game. Anyone requesting a specific player should contact Richard Paige prior to entry into the lockerroom.

Lute Olson has a contractual obligation to television networks and KNST Radio first and then will proceed to the interview room (109C). Usually, the visiting coach will go first, followed by Olson. If the opposing coach is required to handle radio obligations, then it will be first-come, first-speak in the interview room (109C). Visiting teams will follow their own policies.

## Phone Lines

KNST radio has installed extra phone lines for visiting radio. Contact Brian Jeffries at KNST radio (520-618-2115) for additional information. Media requesting own phone lines on press row can contact the University of Arizona phone office (520-621-5232).

## Still Photographers

Courtside photo access will be granted only to working media photographers and must be requested by editors or sports directors. Tripods are prohibited. Strobe lighting for non-NCAA Championship games may be installed on a case-by-case basis, but must be approved and installed well in advance of any game. Still photographers are restricted to the designated baseline areas (northwest and southeast floor area).

## News Television Photographers

Television photographers are restricted to the same baseline areas as still photographers. No live shots will be permitted on the floor prior to or during any game.

## Broadcast Television

Live television crews have locations at mid-court. There is opportunity for baseline camera locations next to the basket supports. Per Pac-10 rules, at no time will cameras be allowed in the team bench area. All television cables are permanently installed.

## Broadcast Rights

All requests for radio and television rights and fees should be directed to UA director of event management Suzy Mason (520-621-6484).

## Press Row

Press seating is located on the floor along the west side of the McKale Center playing floor and along the baselines. Press row is reserved for working media members only. Friends, spouses and children are not allowed to sit at press row, in compliance with the United States Basketball Writers Association working code. It should go without saying that cheerleading is not permitted.

## NBA Scouts

All authorized NBA scouts will be required to purchase a ticket through The McKale Center Ticket Office at (800) 452-2287 (fax 520-621-2419). All NBA requests must be made on team letterhead and be guaranteed with a credit card. All requests will be verified by the NBA. The best available seat will be issued, however with McKale Center being sold out for the last 15 years these tickets may not be near courtside (**NBA scouts do not sit on press row**). Media guides and game notes will be available for all NBA scouts in the work room (McKale Center Room 109). *It is recommended that NBA organizations contact the McKale Center Ticket Office on or before Nov. 1, the date any remaining single-game tickets go on sale to the general public.*

## Directions to McKale Center

**From Tucson International Airport:** Follow Tucson Boulevard out of Tucson International airport to Kino Parkway (three miles). Turn right on Kino Parkway and head north (Kino Parkway eventually changes name and becomes Campbell Avenue) for four miles. After crossing Sixth Street take the first left and McKale Center will be on your immediate right.

**From Phoenix:** Take I-10 East (approximately 100 miles). When arriving in Tucson exit off to Speedway Boulevard. Turn left onto Speedway and go two and one-half miles to Campbell Avenue. Turn right onto Campbell Avenue and go approximately one-third of a mile. Entry to McKale Center will be the first right after the light.



# Basketball Media Outlets

## Newspapers

### Arizona Daily Star (a.m.)

4850 S. Park Ave.  
Tucson, AZ 85726  
(520) 573-4145; fax: (520) 573-4149  
James Bennett (Sports Editor), Bruce Pascoe (BKB Beat), Greg Hansen (Columnist)

### Tucson Citizen (p.m.)

4850 S. Park Ave.  
Tucson, AZ 85726  
(520) 573-4635; fax: (520) 573-4569  
Mike Chesnick (Sports Editor), Steve Rivera (BKB Beat), Corky Simpson (Columnist)

### Associated Press – Phoenix

505 N. 2nd St., Suite 120  
Phoenix, AZ 85004  
(602) 258-8934; fax: (602) 254-9573  
Mel Reisner, Bob Baum

### Associated Press – Tucson

P.O. Box 26807  
Tucson, AZ 85726  
(520) 294-1400  
Art Rotstein

### Arizona Republic (Phoenix a.m.)

200 E. Van Buren St.  
Phoenix, AZ 85004  
(602) 444-8222; night: (602) 444-8107;  
fax: (602) 444-8295/8686  
Dave Lumia (Team Leader), Paola Boivin (BKB Beat)

### East Valley Tribune (Phoenix Area a.m.)

P.O. Box 1547  
Mesa, AZ 85211  
(480) 898-6525; fax: (480) 898-6362  
Slim Smith, (Executive Sports Editor), Scott Bordow (Columnist)

### Cat Tracks (weekly newspaper)

1402 N. Alvernon  
Tucson, AZ 85716  
(520) 327-0705; fax: (520) 327-0018  
Brad Allis (Editor)

### Arizona Daily Wildcat (student daily)

Student Union, University of Arizona  
Tucson, AZ 85721  
(520) 621-7581; fax: (520) 621-3094  
Brett Fera (Sports Editor); James Kelly (Beat)

### El Monitor (Spanish weekly)

901 N. 4th Street  
Phoenix, AZ 85004  
(602) 257-9797; fax: (520) 258-2603

## Television

### KGUN-TV (ABC), Channel 9

P.O. Box 17990  
Tucson, AZ 85731-7990  
(520) 290-7730/7731; fax: (520) 733-7062  
Dave Silver (Sports Director), Phil Buehler

### KOLD-TV (CBS), Channel 13

7831 N. Business Park Dr.  
Tucson, AZ 85743  
(520) 744-6397; fax: (520) 629-8549  
Scott Kilbury (Sports Director), Todd Grisham

### KVOA-TV (NBC), Channel 4

209 W. Elm  
Tucson, AZ 85705  
(520) 884-4641; fax: (520) 884-4644  
Dan Ryan (Sports Director), Pete Delgado, Eric Rhodes

### KWBA-TV (WB), Channel 58

3481 E. Michigan  
Tucson, AZ 85714  
(520) 889-5800; fax: (520) 889-5855  
Michael Cowman

### KHRR-TV (Telemundo), Channel 40

2919 E. Broadway Blvd.  
Tucson, AZ 85716  
(520) 322-6888; fax: (520) 881-7926  
Francisco Romero

### KNXV-TV (ABC – Phoenix), Channel 15

515 N. 44th Street  
Phoenix, AZ 85008  
602-685-6319; fax: 602-685-6363  
Craig Fouhy, Todd Coleman

### KPHO-TV (CBS – Phoenix), Channel 5

4016 N. Black Canyon Hwy  
Phoenix, AZ 85017  
602-650-0723; fax: 602-650-0761  
Gary Cruz, Chris Coraggio, Gregg Byron

### KPNX-TV (NBC – Phoenix), Channel 12

1101 N. Central Ave.  
Phoenix, AZ 85011  
602-257-1212; fax: 602-257-6619  
Bruce Cooper, Mark Lewis, Mark Curtis, Steve Overmyer, Chris Katsaras

### KSAZ-TV (FOX – Phoenix), Channel 10

511 W. Adams  
Phoenix, AZ 85003  
602-262-5124; fax: 602-262-0435  
Neil Wolfe, Kevin McCabe, Jude LaCava, Gayle Jansen

### KTVK-TV (Ind. – Phoenix), Channel 3

5555 N. 7th Ave.  
Phoenix, AZ 85013  
(602) 207-3476  
Mike Chamberlin, Gil Tyree, Todd Kelly, Paul Zimmerman

## Wildcat Sports Carriers

### Fox Sports Net Arizona (TV Rights Holder)

One Renaissance Square  
2 North Central, Suite 1700  
Phoenix, AZ 85004  
(602) 257-9500; fax: (602) 257-0848  
Rebecca O'Sullivan (General Manager); Brett Hansen (Public Relations); Tom Pahnke (Executive Producer); Brady Clyma (Producer); Brad Steinke, Bob Fiscella, Terry Chick, (anchors); Jody Jackson, Kevin McCabe, Sean Mooney, Dan Omahen (reporters)

### Dave Sitton

### (Fox Sports Net Arizona TV play-by-play)

6821 Calle Luciente  
Tucson, AZ 85715  
(520) 795-5520; fax: (520) 795-5570

### Bob Elliott (FSNA TV color analyst)

4511 N. Campbell Ave., Suite 255  
Tucson, AZ 85718-6418  
(520) 326-1850; fax: (520) 326-1924

### KNST Radio (Radio Network Flagship Station)

3202 N. Oracle Road  
Tucson, AZ 85705  
(520) 618-2100/326-1200; fax: (520) 618-2135  
Brian Jeffries (Sports Director, play-by-play, Lute Olson show host), Joe Nehls (BKB analyst), Ryan Radtke (Sports Tonight Host)

### Radio XENY (760 AM, Spanish Originating Station)

P.O. Box 1472  
Nogales, AZ 85628  
Joel Bojorquez, Javier Espinoza  
phone in Nogales, Mexico: 01152631-2-00-14;  
fax: 01152631-2-22-62

## Radio

### Clear Channel Communications

KNST (790 AM - Flagship), KCEE (940 AM), KRQ (93.7

FM), KWFM (92.9 FM)  
3202 N. Oracle Road  
Tucson, AZ 85705  
520-618-2100; fax: 520-618-2135

### Arizona Lotus Corporation

KFMA (92.1 FM), KLPX (96.1 FM), KTKT (990 AM)  
1920 W. Copper Road  
Tucson, AZ 85745  
(520) 622-6711; fax: (520) 624-3226

### Good News Radio Broadcasting

KGMS (97.1 FM), KVOI (690 AM)  
3222 S. Richey Ave.  
Tucson, AZ 85713  
(520) 790-2440; fax: (520) 790-2937

### KJLL (1330 AM)

4320 N. Campbell Ave., Suite 234  
Tucson, AZ 85718  
(520) 529-5865; fax: (520) 529-9324

### Journal Broadcast Group

KFFN (1490 AM), KGMG (106.3 FM), KMXZ (94.9 FM), KZPT (104.1 FM)  
3438 N. Country Club Road  
Tucson, AZ 85716  
(520) 795-1490; fax: (520) 618-3155

### Slone Broadcasting Group

KIIM (99.5 FM), KHIT (107.5 FM), KOAZ (97.5 FM); KTUC (1400 AM), KCUB (1290 AM)  
575 W. Roger Road  
Tucson, AZ 85705  
(520) 887-1000; fax: (520) 887-6397

### Phoenix Radio Stations

**KGME:** (602) 266-1360

**KMVP:** (602) 277-6877

**KTAR:** (602) 274-6200

**KDUS:** (480) 838-0400

**KDKB:** (480) 897-9300

**KFLR:** (602) 258-6717

## Arizona Daily Newspapers

### Ahwatukee Foothills News

10631 S. 51st Street  
Phoenix, AZ 85636  
(480) 496-0665

### Bisbee Review

Box 127  
Bisbee, AZ 85603

### Casa Grande Dispatch

P.O. Box 15002  
Casa Grande, AZ 85230-5002  
(520) 836-7461; fax: (520) 836-0343

### Five Star Publishing (Sierra Vista)

P.O. Box 1119  
Sierra Vista, AZ 85636  
(520) 458-3340; fax: (520) 458-9938

### Green Valley News

P.O. Box 567  
Green Valley, AZ 85622  
(520) 625-5511; fax: (520) 625-8046

### Sierra Vista Herald

P.O. Box 158  
Sierra Vista, AZ 85635



# Broadcast Partners: KNST Radio and Fox Sports Net



**Brian Jeffries**  
"Voice of the Wildcats"

Clear Channel Communications/KNST-AM and The University of Arizona department of Intercollegiate Athletics are in the final year of a five-year agreement for radio broadcasts of Wildcat athletics.

The contract has KNST of Tucson originating broadcasts and operating a radio network of affiliates for UA events through

the 2003 football and 2003-2004 men's basketball seasons. Additionally, KNST or its sister stations will broadcast women's basketball and baseball games each year in the Tucson market through the 2004 seasons.

The contract calls for weekly football and men's basketball radio coaches shows with John Mackovic and Lute Olson, as well as a weekly magazine format featuring content related to UA's other intercollegiate athletics programs and a monthly show with Arizona athletics director Jim Livengood. A separate agreement with KNST includes weekly John Mackovic and Lute Olson coaches television shows.

Brian Jeffries is the UA network's play-by-play announcer. He has received numerous broadcast awards in his career, which includes "Voice of the Wildcats" duties dating to the 1986 Aloha Bowl appearance.

Jeffries earned first-place awards in the Associated Press Broadcasters competition in 1984, 1992, 1995, 1996 and 1997 and has become one of the best-spoken, dynamic and articulate voices in college football and basketball broadcasting. A native of Tacoma, Wash., Jeffries reported sports at radio stations there and in Boise, Idaho, before joining the KNST staff. Jeffries' voice is synonymous with UA football and basketball and he routinely supports various UA special events. He was inducted into the Pima County (Ariz.) Sports Hall of Fame in September 2003.

Former all-Pac-10 guard Joe Nehls continues as the men's basketball color analyst. Nehls was a Wildcat standout from 1976-80 and still ranks 16th on the UA career scoring list with 1,409 points and is a Tucson businessman in real estate. He has served on Arizona basketball broadcasts since 1988.

The radio broadcast contract will earn the department of intercollegiate athletics annual rights fee payments which total \$3.3 million over the course of the contract, along with additional revenue opportunities through bonuses for postseason broadcast opportunities in football and basketball. The UA receives various promotional benefits as well. In the first year of the contract the rights fee is \$645,000, while the television coaches shows agreement will earn UA total five-year rights fees payments of \$650,000, with additional monies if the net revenues for Clear Channel exceed certain levels.

UA signed other media contracts with Fox Sports Net for television broadcasts and Professional Sports Publications for production of game programs, which collectively with the radio

broadcast rights and television coaches shows give UA a total of \$5.53 million in rights fees during the course of the contracts.

KNST has been UA's flagship station for more than 20 years and previously owned the rights itself from 1984-94.

KNST's game signals will be available worldwide through Internet audio, through RealNetworks.com. Plus, all Arizona football and men's basketball games originated by the station are distributed telephonically by TRZ Sports Services of Akron, Ohio. Listeners can call 1-800-846-4700 for an automated menu, entering UA's team code of 5909 or call for additional information at (800) 225-5321.

The University of Arizona is in the final year of a five-year agreement with Fox Sports Net Arizona (FSNA), a regional sports cable network that serves two million homes in Arizona and New Mexico. FSNA is also available nationwide through the Direct TV satellite service.

The network televises Wildcat basketball games on



The FSNA broadcast team of Bob Elliott (left) and Dave Sitton.

a regional basis when the contests are not carried nationally by the Pac-10 Conference's television partners - ABC, Fox Sports Net and CBS - or any other television networks.

Fox Sports Net offers Wildcat fans unparalleled coverage of University of Arizona athletic teams, student-athletes and coaches, whether through its weekly half-hour "Wildcat Insider" magazine show or the nightly 10 p.m. "Arizona Sports Report."

FSNA, which is the first statewide 24-hour regional sports network, also holds exclusive non-broadcast television rights to the NHL's Phoenix Coyotes, Major League Baseball's Arizona Diamondbacks and the NBA's Phoenix Suns. The network, which is an owned-and-operated affiliate of Fox Sports Net, will televise Pac-10 Conference and Big 12 Conference football this fall. The Pac-10 Game of the Week is telecast Thursdays at 7:30 p.m. PST with a doubleheader on Saturdays during the season. In addition, the network televises various Olympic sports events featuring University of Arizona athletics.

Under terms of the contract, Fox Sports Net agreed to pay the UA athletics department an escalating annual rights fee for live or tape delayed football and men's basketball cablecasts or broadcasts for a total of \$1.1 million during the contract.

FSNA also works with the University to develop options for football and basketball television broadcasts, including over-the-air release with other properties in the market area.

"Our relationship with Fox Sports Net has developed into an outstanding arrangement for Wildcat



fans," athletics director Jim Livengood said. "The company represents a growing segment in the industry and has given us considerable exposure throughout the state and nation."

Nationally, Fox Sports Net reaches more than 80 million homes through its 21 regional sports networks around the country.

Last season, 21 of Arizona's 32 television appearances were produced by Fox Sports Net or Fox Sports Net Arizona.

Wildcat sports veteran Dave Sitton will handle the play-by-play again this season. The 2003-04 season will be Sitton's 14th behind the microphone as the voice of Wildcat basketball. A local businessman, and vice president of ClearChannel Outdoor, Sitton also is the television play-by-play voice of Arizona football. In the past, he has worked as a rugby commentator for ESPN, Fox Sports World and Fox Sports Net, and has played for or coached the University of Arizona club rugby team since 1974. Sitton also served as the voice of Arizona baseball on the radio from 1981-90.

Bob Elliott, one of the finest players in UA history, returns for his fifth season as the analyst for Wildcat basketball. A four-year letterman from 1974-77, Elliott was a two-time All-American and three-time All-Western Athletic Conference selection. In his career, Elliott averaged 18.7 points per game and scored 2,131 points, the second-highest total in school history.

## Arizona Radio Network

All Arizona basketball games are broadcast live on the Arizona Radio Network, which consists of 16 affiliates in Arizona, California, Nevada and Mexico. KNST Newsradio 790 in Tucson serves as the flagship.

Douglas	KDAP	96.5 FM
Flagstaff	KVNA	600 AM
Globe	KIKO	106.1 FM
Holbrook	KZUA	92.1 FM
Las Vegas, Nev.	KLAV	1230 AM
Needle, Calif.	KTOX	1340 AM
Nogales, Sonora	XENY	760 AM
Phoenix	KKNT	960 AM
Safford/Thatcher	KWRQ	102.1 FM
Show Low	KVSL	1450 AM
Sierra Vista/Bisbee	KTAN	1420 AM
Tucson (Flagship)	KNST	790 AM
Tucson	KXEW	1600 AM
Winslow	KINO	1230 AM
Yavapai/Prescott	KNOT	1450 AM
Yuma	KBLU	560 AM



# The Pacific-10 Conference

Entering the 2003-04 season, the Pacific-10 Conference continues to uphold its tradition as the "Conference of Champions."® Pac-10 members have claimed an incredible 73 NCAA team titles over the past nine seasons, for an average of more than eight championships per academic year.

Even more impressive is the breadth of the Pac-10's success, as those 73 team titles over the past nine seasons have come in 21 different men's and women's sports. The Pac-10 has now led the nation in NCAA Championships 38 of the last 43 years and finished second five times.

Spanning nearly a century of outstanding athletics achievement, the Pac-10 has captured 323 NCAA titles (243 men's, 82 women's), far outdistancing the runner-up Big Ten Conference's 193 titles.

The Conference's reputation is further proven in the annual NACDA Directors' Cup competition, the prestigious award that honors the best overall collegiate athletics programs in the country. STANFORD continued its remarkable run in the 2002-03 season, winning its ninth consecutive NACDA Directors' Cup. In the 2002-03 competition, four of the top 10, and seven of the top 20 Division I programs, were Pac-10 members: No. 1 STANFORD, No. 6 UCLA, No. 9 CALIFORNIA, No. 10 ARIZONA STATE, No. 13 USC, No. 16 ARIZONA and No. 17 WASHINGTON.

The Pac-10 captured eight NCAA titles in 2002-03, most of any conference. The Pac-10 total of eight edged out the Southeastern Conference, which was runnerup with seven NCAA crowns. No other conference earned more than three NCAA championships. The Pac-10 had the most NCAA titles of any conference in women's sports with five, and tied with the SEC for most in men's sports with three. NCAA team champions from the Pac-10 in 2002-03 came from: Stanford (men's water polo, men's cross country), UCLA (men's soccer, gymnastics, women's water polo, softball), and USC (volleyball, women's golf). The Pac-10 also had runners-up in eight NCAA Championship events: California (men's water polo, softball), Stanford (baseball, men's soccer, women's cross country, women's volleyball, women's water polo, women's tennis). Overall, the Conference had 23 teams finish in the top three at NCAA Championship events.

Participation in the postseason was a common occurrence for the Pac-10 in 2002-03. Of the 22 sports sponsored by the Pac-10, 19 witnessed at least half its teams participating in the postseason. The men sent 64 of a possible 87 teams into the postseason (73.6 percent), while the women sent 78 of a possible 99 teams into NCAA Tournament action (78.8 percent).

The Pac-10 experienced continued success in football as the league sent six teams to bowl games. USC won the Nokia Sugar Bowl, and Trojan quarterback Carson Palmer became the eighth player from the Pac-10 to win the Heisman Trophy. WASHINGTON STATE represented the Conference in the Rose Bowl, while ARIZONA STATE, UCLA, OREGON, OREGON STATE, and WASHINGTON also earned bowl bids. Overall, the Conference posted a stellar 32-15 (.681) record versus non-conference foes in 2002.

The Pac-10 also showed its worth on the basketball court, as it sent five teams into the Men's NCAA Tournament where Arizona advanced to the Elite Eight. It was the second consecutive year in which a Pac-10 team appeared in the round of eight.

The Pac-10 Men's Basketball Tournament returned to Los Angeles, with Oregon making a run through the tourney to earn the NCAA automatic bid. On the

women's side, Pac-10 champion Stanford won the second Conference Tournament in San Jose, defeating Arizona in the hard fought final.

The Conference continued its dominance in softball as all eight teams made it to the NCAA Regional Tournament for the third time, marking the fifth consecutive season the Pac-10 has sent at least seven teams to regionals. Arizona, California, UCLA and Washington made it to the Women's College World Series where the defending NCAA champion Golden Bears and Bruins battled for the national title, the 10th time Conference teams have faced each other in the championship game, and the 20th time in 22 years the Pac-10 has sent at least one team to the title game. The Bruins persevered to win their ninth NCAA softball crown.

During the season, the Conference also added to its golf history as USC garnered the women's title. Women's volleyball was another showcase of Pac-10 talent, as a record eight teams were selected for the NCAA Tournament. USC and Stanford marched to the



Final Four, marking the ninth time the Conference has placed two or more teams in the national semifinals. For the fifth time since 1992, the NCAA Volleyball Final involved two Pac-10 teams, with USC outlasting Stanford for its second NCAA title. In all, five NCAA Championship games/matches in 2002-03 involved two Pac-10 squads: men's soccer, volleyball, men's & women's water polo and softball.

On the men's side, Pac-10 members have won 243 NCAA Team Championships, far ahead of the 184 claimed by the runner-up Big Ten. Men's NCAA crowns have come at a phenomenal rate for the Pac-10 - 15 basketball titles by five schools (more than any other conference), 48 tennis titles, 45 outdoor track and field crowns, and 24 baseball titles. Pac-10 members have won 23 of the last 34 NCAA titles in volleyball, 29 of the last 44 in water polo, and 20 total swimming and diving national championships.

Individually, the Conference has produced an impressive number of NCAA men's individual champions as well, claiming 1071 NCAA individual crowns.

On the women's side, the story is much the same. Since the NCAA began conducting women's championships 22 years ago, Pac-10 members have claimed at least four national titles in a single season on 14 occasions. Overall, the Pac-10 has captured 82 NCAA women's crowns, easily outdistancing the Southeastern Conference, which is second with 58. Pac-10 members have dominated a number of sports,

winning 16 softball titles, 14 tennis crowns, eight of the last 13 volleyball titles, ten of the last 14 trophies in golf and eight of the last 14 in swimming and diving.

Pac-10 women athletes shine nationally on an individual basis as well, capturing an unmatched 404 NCAA individual titles, an average of nearly 19 champions per season.

The roots of the Pacific-10 Conference go back nearly 87 years to December 15, 1915, when the Pacific Coast Conference (PCC) was founded at a meeting at the Oregon Hotel in Portland, Ore. Original membership consisted of four schools - the University of California at Berkeley, the University of Washington, the University of Oregon, and Oregon State College (now Oregon State University). All still are charter members of the Conference.

Pacific Coast Conference play began in 1916. One year later, Washington State College (now Washington State University), was accepted into the Conference, and Stanford University joined in 1918.

In 1922, the PCC expanded to eight teams with the admission of the University of Southern California and the University of Idaho. Montana joined the Conference in 1924, and in 1928, the PCC grew to 10 members with the addition of UCLA.

The Pacific Coast Conference competed as a 10-team league until 1950, with the exception of 1943-45, when World War II curtailed intercollegiate athletic competition to a minimum. In 1950, Montana resigned from the Conference and joined the Mountain States Conference. The PCC continued as a nine-team Conference through 1958.

In 1959, the PCC was dissolved and a new Conference was formed - the Athletic Association of Western Universities. Original AAWU membership consisted of California, Stanford, Southern California, UCLA, and Washington. Washington State became a member in 1962, while Oregon and Oregon State joined in 1964. In 1968, the name Pacific-8 Conference was adopted.

Ten years later, on July 1, 1978, the University of Arizona and Arizona State University were admitted and the Pacific-10 Conference became a reality. In 1986-87, the league took on a new look, expanding to include 10 women's sports.

Currently, the Pac-10 sponsors 11 men's sports and 11 women's sports. Additionally, the Conference is a member of the Mountain Pacific Sports Federation (MPSF) in four other men's sports and two other women's sports.

Edwin N. Atherton was named the Conference's first Commissioner in 1940. He has been succeeded by Victor O. Schmidt (1944), Thomas J. Hamilton (1959), Wiles Hallock (1971), and current Commissioner Thomas C. Hansen in 1983.

The Pacific-10 Conference offices are located 25 miles east of San Francisco in Walnut Creek, Calif.



# Pac-10 Composite Schedule

## ALL TIMES LOCAL TO SITE

### Fri., Nov. 7

LA City Stars at USC, 7 p.m. (X)

### Sat., Nov. 8

EA Sports at Washington, Noon (X)

### Sun., Nov. 9

Basketball Travelers at Oregon, 6 p.m. (X)

### Mon., Nov. 10

Basketball Travelers at Washington State, 7 p.m. (X)

Athletes in Action at California, 7 p.m. (X)

### Tues., Nov. 11

EA Sports at Oregon State, 7 p.m. (X)

### Wed., Nov. 12

Sydney at Arizona, 7 p.m. (X)

EA Sports All-Stars at Arizona State, 7 p.m. (X)

Athletes-in-Action at Washington, 7 p.m. (X)

EA Sports AllIDStars at UCLA, 7:30 p.m. (X)

### Fri., Nov. 14

EA Sports at California, 7 p.m. (X)

### Sat., Nov. 15

EA Sports at Washington State, 7 p.m. (X)

### Sun., Nov. 16

Sydney Kings at Oregon State, 2 p.m. (X)

Team Nike at Stanford, 5 p.m. (X)

Long Island All-Stars at USC, 6 p.m. (X)

### Mon., Nov. 17

Basketball Traveler's at Arizona State, 7 p.m. (X)

EA Sports All-Stars at Oregon, 7 p.m.

### Tues., Nov. 18

Southern California All-Stars at UCLA, 7:30 p.m. (X)

### Thurs., Nov. 20

Team Nike at Arizona, 7 p.m. (X)

Washington State vs. VMI, 8:30 p.m. (14)

### Fri., Nov. 21

USC at Western Michigan, 7 p.m.

Fresno State at Oregon, 7 p.m.

Portland State at Washington, 7 p.m.

Cal Poly at California, 8 p.m.

### Sat., Nov. 22

Arkansas-Little Rock at Arizona State, 1 p.m.

Washington State vs. Texas-San Antonio or Alaska

Fairbanks, 12 noon or 5:30 p.m. (14)

Prairie View at Oregon State, 7 p.m.

Sacramento State at Stanford, 7 p.m.

### Sun., Nov. 23

Washington State at Top of World Tourney, TBA

(14)

### Mon., Nov. 24

Northern Arizona at Arizona, 6:30 p.m.

Cal State Fullerton at Arizona State, 7 p.m.

UC Riverside at Washington, 7 p.m.

### Tues., Nov. 25

Portland at Oregon State, 7 p.m.

Stanford at UC Irvine, 7 p.m.

### Wed., Nov. 26

Brigham Young at California, 7 p.m.

### Fri., Nov. 28

Washington State at Southern Utah, 6:35 p.m.

Arizona vs. Florida, 9 p.m. (1) (ESPN2)

### Sat., Nov. 29

UC Riverside at Arizona State, 1 p.m.

Eastern Washington at Washington, 1 p.m.

Indiana-Purdue Ft. Wayne at Oregon State, 2 p.m.

Vermont at UCLA, 5 p.m.

California at UNLV, 7:30 p.m.

### Sun., Nov. 30

Cal State Northridge at USC, Noon

Stanford at Rice, 3:30 p.m.

### Mon., Dec. 1

Oregon State at Colorado, 7 p.m.

Indiana Purdue-Fort Wayne at Washington State,

7 p.m.

### Tues., Dec. 2

Portland State at Oregon, 7 p.m.

### Wed., Dec. 3

Arizona State at Nebraska, TBD

UC Irvine at California, 7 p.m.

Gonzaga at Washington, 7 p.m.

UC Riverside at UCLA, 7:30 p.m.

UNLV at USC, 7:30 p.m.

### Sat., Dec. 6

Arizona vs. St. Louis, Noon (2) (ESPN2)

UCLA vs. Kentucky, 10:30 a.m. (12) (CBS)

Stanford vs. Kansas, 1 p.m. (12)

Washington at Wyoming, 4 p.m.

Oregon vs. Marshall, 6 p.m. (9)

TCU at Washington State, 5 p.m.

California at Colorado, 7 p.m.

Kansas State at Oregon State, 7 p.m.

USC at Saint Mary's, 7 p.m.

### Tues., Dec. 9

Arizona vs. Texas, 9 p.m. (3) (ESPN)

Wyoming at California, 7 p.m.

Temple vs. Arizona State, 8:30 p.m. (5) (FSN)

Cal State Fullerton at USC, 7:30 p.m.

### Fri., Dec. 12

Willamette at Oregon State, 7 p.m.

### Sat., Dec. 13

Oregon vs. Kansas, 1 p.m. (10) (ESPN)

Marquette at Arizona, 2 p.m. (FSN)

UNLV at Stanford, 3 p.m. (FSN)

Washington State at Montana, 6:35 p.m.

USC at BYU, 7 p.m.

Loyola at UCLA, 7:30 p.m.

### Mon., Dec. 15

Florida International at Stanford, 7 p.m.

Oregon State at Hawaii, 7 p.m.

### Wed., Dec. 17

Arizona State at Northwestern, 7 p.m.

St. Mary's at Arizona, 6:30 p.m.

Santa Clara at Oregon, 7 p.m.

UC Santa Barbara at UCLA, 7:30 p.m.

### Fri., Dec. 19

USC at Fresno State, 7 p.m.

### Sat., Dec. 20

Idaho at Washington State, 2 p.m.

Michigan State at UCLA, 3:30 p.m. (FSN)

California vs. St. Joseph's, 8 p.m. (7)

Oregon vs. Alabama, 7 p.m. (11) (ESPN2)

Stanford vs. Gonzaga, 6 p.m. (7)

Boise State at Oregon State, 7 p.m.

Washington at Houston, 7:30 p.m.

### Mon., Dec. 22

San Diego State at Arizona, 6:30 p.m.

McNeese State at Arizona State, 6 p.m.

Oregon at Portland, 7 p.m.

Sacramento State at Oregon State, 7 p.m.

Southern Utah at Stanford, 7 p.m.

Cal Poly at USC, 7:30 p.m.

Washington State at Fresno State, 7 p.m.

### Sat., Dec. 27

Columbia at California, 7 p.m. (8)

UCLA at Michigan, 5 p.m. (CBS)

Washington at San Diego State, 7 p.m.

### Sun., Dec. 28

Liberty at Arizona, 4 p.m. (4)

Air Force/Prairie View A&M at California, TBD (8)

Jackson State at Oregon State, 2 p.m.

Harvard at Stanford, 5 p.m.

Lafayette at USC, 5 p.m.

Washington State at Gonzaga, TBD

### Mon., Dec. 29

San Diego at Arizona State, 5 p.m. (6)

### Tues., Dec. 30

Valparaiso/Louisiana-Lafayette at Arizona, TBD (4)

Winthrop/Western Michigan at Arizona State, TBD

(6)

Columbia at Washington, 7 p.m.

### Fri., Jan. 2

Washington at California, 7 p.m.

Washington State at Stanford, 7 p.m.

Oregon at USC, 6 p.m.

Oregon State at UCLA, 8 p.m.

### Sat., Jan. 3

Arizona at Arizona State, 1:30 p.m. (FSN)

### Sun., Jan. 4

Washington State at California, TBD

Washington at Stanford, 1 p.m.

Oregon at UCLA, 2 p.m. (FSN)

Oregon State at USC, Noon

### Thurs., Jan. 8

California at Arizona, 6:30 p.m.

Stanford at Arizona State, 8:30 p.m. (FSN)

UCLA at Washington State, 7 p.m. (13)

USC at Washington, 7 p.m.

### Sat., Jan. 10

Stanford at Arizona, 4:30 p.m. (FSN)

California at Arizona State, 6:30 p.m. (FSN)

Oregon at Oregon State, 7:30 p.m.

UCLA at Washington, 7:30 p.m.

USC at Washington State, 1 p.m. (13) (FSN)

### Thurs., Jan. 15

Washington at Oregon, 6 p.m. (FSN)

Washington State at Oregon State, 8 p.m. (FSN)

Arizona State at UCLA, 7:30 p.m.

Arizona at USC, 8 p.m. (FSN)

### Sat., Jan. 17

Washington State at Oregon, 5:15 p.m.

Washington at Oregon State, 1 p.m. (FSN)

California at Stanford, 8 p.m. (FSN)

Arizona at UCLA, 3 p.m. (ABC)

Arizona State at USC, 6 p.m.

### Thurs., Jan. 22

Oregon at Arizona State, 8:30 p.m. (FSN)

Oregon State at Arizona, 6:30 p.m. (FSN)

USC at California, 7 p.m.

UCLA at Stanford, 5:30 p.m. (FSN)

### Sat., Jan. 24

Oregon State at Arizona State, 7 p.m.

UCLA at California, 1 p.m. (CBS)

USC at Stanford, 7 p.m.

Washington at Washington State, 2 p.m.

### Sun., Jan. 25

Oregon at Arizona, 2 p.m. (CBS)

### Wed., Jan. 28

USC at UCLA, 7:30 p.m.

### Thurs., Jan. 29

California at Oregon, 7:30 p.m. (FSN)

Stanford at Oregon State, 7 p.m.

Arizona at Washington, 7 p.m.

Arizona State at Washington State, 7 p.m.

### Sat., Jan. 31

Stanford at Oregon, 3 p.m. (FSN)

California at Oregon State, 7 p.m.

Arizona State at Washington, 5 p.m.

Arizona at Washington State, 1 p.m. (FSN)

UCLA at St. John's, 1:30 p.m. (CBS)

### Thurs., Feb. 5

Arizona at California, 7:30 p.m. (FSN)

Arizona State at Stanford, 7 p.m.

Washington State at UCLA, 7:30 p.m.

Washington at USC, 7:30 p.m.

### Sat., Feb. 7

Arizona State at California, 2 p.m. (FSN)

Arizona at Stanford, Noon (CBS)

Oregon State at Oregon, 4 p.m. (FSN)

Washington at UCLA, 6 p.m.

Washington State at USC, 8 p.m.

### Thurs., Feb. 12

USC at Arizona, 6:30 p.m. (FSN)

UCLA at Arizona State, 8:30 p.m. (FSN)

Oregon at Washington, 7:30 p.m.

Oregon State at Washington State, 5:30 p.m. (FSN)

### Sat., Feb. 14

UCLA at Arizona, 1 p.m. (FSN)

USC at Arizona State, 6 p.m.

Stanford at California, 7 p.m. (FSN)

Oregon State at Washington, 2 p.m.

Oregon at Washington State, 2 p.m.

### Thurs., Feb. 19

Arizona at Oregon, 7:30 p.m. (FSN)

Arizona State at Oregon State, 7 p.m.

California at UCLA, 7:30 p.m.

Stanford at USC, 7:30 p.m.

Washington State at Washington, 7 p.m.

### Sat., Feb. 21

Arizona State at Oregon, 5 p.m. (FSN)

Arizona at Oregon State, 7 p.m.

California at USC, 3 p.m. (ABC)

Stanford at UCLA, 1 p.m. (CBS)

### Sun., Feb. 22

Washington at North Carolina State, 5:30 p.m. (FSN)

### Wed., Feb. 25

UCLA at USC, 7:30 p.m. (FSN)

### Thurs., Feb. 26

Washington at Arizona, 6:30 p.m.

Washington State at Arizona State, 7 p.m.

Oregon at California, 4 p.m. (FSN)

Oregon State at Stanford, 7 p.m.

### Sat., Feb. 28

Washington State at Arizona, Noon

Washington at Arizona State, 7 p.m.

Oregon State at California, 8 p.m. (FSN)

Oregon at Stanford, 4 p.m. (ABC)

Notre Dame at UCLA, 1 p.m. (CBS)

### Thurs., March 4

USC at Oregon, 5:30 p.m.

UCLA at Oregon State, 7:30 p.m. (FSN)

California at Washington, 7 p.m.

Stanford at Washington State, 7 p.m.

### Sat., March 6

UCLA at Oregon, 1 p.m. (CBS)

USC at Oregon State, 5 p.m. (FSN)

Stanford at Washington, 3 p.m. (ABC)

California at Washington State, 2 p.m.

### Sun., March 7

Arizona State at Arizona, 2 p.m. (CBS)

### Thurs., March 11

Pac-10 Tournament (15)

Quarterfinal One, TBD (FSN)

Quarterfinal Two, TBD (FSN)

Quarterfinal Three, TBD (FSN)

Quarterfinal Four, TBD (FSN)

### Fri., March 12

Pac-10 Tournament (15)

Semifinal One, 6 p.m. (FSN)

Semifinal Two, 8:30 p.m. (FSN)

### Sat., March 13

Pac-10 Tournament (15)

Championship, 3:15 p.m. (



# NCAA Tournament Information

## 2004 NCAA Men's Basketball Championship

### First/Second Round Sessions

HSBC Arena, Buffalo, N.Y., March 18 & 20  
Canisius College, Niagara University and MAAC, tri-hosts

RBC Center, Raleigh, N.C., March 18 & 20  
North Carolina State University, host

Kemper Arena, Kansas City, Mo., March 19 & 21  
Big 12 Conference, host

T.D. Waterhouse Center, Orlando, Fla., March 19 & 21  
Stetson University, host

Nationwide Arena, Columbus, Ohio, March 19 & 21  
Ohio State University, host

Bradley Center, Milwaukee, Wis., March 19 & 21  
Marquette University, host

Pepsi Center, Denver, Colo., March 18 & 20  
Colorado State University and Mountain West Conference, co-hosts

Key Arena, Seattle, Wash., March 18 & 20  
University of Washington, host

### 2004 Regional Sessions

#### East

Continental Airlines Arena, East Rutherford, N.J., March 25 & 27  
Rutgers University, host

#### South

Georgia Dome, Atlanta, Ga., March 26 & 28  
Georgia Institute of Technology, host

#### Midwest

Edward Jones Dome, St. Louis, Mo., March 26 & 28  
Missouri Valley Conference, host

#### West

America West Arena, Phoenix, Ariz., March 25 & 27  
Arizona State University, host

### 2004 Final Four

Alamodome, San Antonio, Texas, April 3 & 5  
University of Texas-San Antonio, host

## NCAA Final Four Future Sites

- 2006:** RCA Dome, Indianapolis, Ind., April 1 & 3  
Butler University and Horizon League, co-hosts
- 2007:** Georgia Dome, Atlanta, Ga., March 31 & April 2  
Georgia Institute of Technology, host
- 2008:** Alamodome, San Antonio, Texas  
University of Texas-San Antonio, host
- 2009:** Ford Field, Detroit, Mich.  
University of Detroit-Mercy, host
- 2010:** RCA Dome, Indianapolis, Ind.  
Butler University and Horizon League, co-hosts
- 2011:** Reliant Stadium, Houston, Texas  
University of Houston, host

## 2005 NCAA Men's Basketball Championship

### First/Second Round Sessions

Charlotte Coliseum, Charlotte, N.C., March 18 & 20  
Davidson College, host

Centrum Centre, Worcester, Mass., March 18 & 20  
College of the Holy Cross, host

Gaylord Entertainment Center, Nashville, Tenn, March 18 & 20  
Ohio Valley Conference, host

Ford Center, Oklahoma City, Okla., March 18 & 20  
Big 12 Conference, host

CSU Convention Center, Cleveland, Ohio, March 17 & 19  
Cleveland State University, host

RCA Dome, Indianapolis, Ind., March 17 & 19  
Butler University and Horizon League, co-hosts

Boise State University Pavilion, Boise, Idaho, March 17 & 19  
Boise State University, host

McKale Center, Tucson, Ariz., March 17 & 19  
University of Arizona, host

### 2005 Regional Sessions

#### East

Carrier Dome, Syracuse, N.Y., March 25 & 27  
Syracuse University, host

#### South

Frank Erwin Center, Austin, Texas, March 25 & 27  
University of Texas, host

#### Midwest

Allstate Arena, Rosemont, Ill., March 24 & 26  
DePaul University, host

#### West

University Arena, Albuquerque, N.M., March 24 & 26  
University of New Mexico, host

### 2005 Final Four

Edward Jones Dome, St. Louis, Mo., April 2 & 4  
Missouri Valley Conference, host

## NCAA Tournament Action at McKale Center

The University of Arizona has played host to NCAA Men's Basketball Tournament first and second round action on seven separate occasions, most recently in March 2000. UA is scheduled to host NCAA first and second round games on March 17 & 19, 2005.

Overall, the University has been the host for NCAA Tournament games on nine occasions: 1973, 1977, 1979, 1987, 1991, 1997 and 2000 for early-round games; and 1974 and 1980 for the West Regionals.

The obvious reason for Arizona's appeal as a tournament site is the tremendous support shown by Wildcat fans each year. Arizona has led the Pac-10 in home basketball attendance for the past 18 seasons. The Wildcats have broken the league record for home attendance in 10 of the last 14 seasons, topped by an average of 14,544 for the 13 regular-season games in 2001-02. Furthermore, a then-Pac-10 record 66,477 fans attended the 1988 Pac-10 Postseason Tournament when McKale Center served as host.

McKale Center also served as the host venue for the 1976 NCAA Wrestling Championships and the 1986 USA World Championships Team training camp.



